

Annual Report of the Congregation



2·0·0·7

Emmaus Evangelical Lutheran Church

1925 Summit Avenue, Racine, Wisconsin

53404-2374. Phone 262 634-5515

e-mail emmausracine@sbcglobal.net

A congregation of the Evangelical Lutheran Church
in America



Table of contents

Pink pages

Mission Statement.....	Pink page 1
Agenda for 2008 meeting.....	Pink page 1
2008 Council candidates and vacancies.....	Pink page 1
Minutes of congregational meeting February 4, 2007	Pink pages 2-3
Covenant of the Congregations of the Racine Mission Cluster.....	Pink page 4

Orange pages: Pastors' reports

Pastor Mary L. Janz's report.....	Orange pages 1-2
Pastor Walter Hermanns' report.....	Orange pages 3-5

Yellow pages: Council reports

Council President's report	Yellow page 1
Building & Grounds Committee report.....	Yellow page 2
Parish Education Committee report	Yellow pages 2-3
Stewardship progress report	Yellow page 4

Green pages: Miscellaneous reports

Outreach Minister's report	Green pages 1-2
Sunday School Treasurer's report.....	Green page 3
Youth account report.....	Green page 3
Pick 'n' Save "We Care" receipts.....	Green page 4
WELCA account report.....	Green page 4
Racine Family Literacy Jul.-Dec. 2007 budget report.....	Green pages 5-11

Blue pages: Membership statistics

Pastoral report and summary of statistics for 2007.....	Blue page 1
Pastoral Acts	Blue pages 2-3

White pages: 2007 Financial reports

Financial Secretary's report	White page 1-2
Mortgage annual statement	White page 3
Memorials and honoraria	White page 3-4
Synod support report.....	White page 5
Treasurer's report: 2007 Budget vs. Actual — Summary	White page 6-8

Gold page: 2008 budget

Proposed 2008 budget	Gold pages 1-2
----------------------------	----------------

Mission Statement

We thank God for our heritage of faith and for the faithfulness of our forebears that over the years have come to include people of many backgrounds. In response to the grace of God focused in Jesus Christ and poured out by the Holy Spirit, the mission of Emmaus is to carry forward our strong heritage. We are called to affirm, interpret and proclaim the Christian Faith through worship, education, witness, service and fellowship by utilizing effectively, as members of God's family, the many different gifts God gives us. (Adopted 1991)

Agenda

- | | |
|--|--|
| Opening devotion — Pastor Janz
Approval of Minutes of Congregational Meeting: February 4, 2007
Pastor's Report
President's Report
Recognition of 2007 Church Council | Election of 2008 Church Council
Approval of the Proposed Budget for 2008
Unfinished Business
New Business
Adjournment to lunch
Prayer |
|--|--|

Candidates for 2008 Council

Additional nominations:

- | | |
|---------------------------|-----------------|
| President | Chris Lamberton |
| Vice President | Randy Sanders |
| Secretary | Cathy Meyer |
| Treasurer | Carolyn Wooster |
| Financial Secretary | Michele Kreimer |
| Building & Grounds | |
| Congregational Fellowship | |
| Member Care | |
| Social Concerns | Linda Jaskulske |
| Stewardship | Judy Yorgan |
| Parish Education | |
| Worship & Music | |
| Youth | |

Emmaus Lutheran Church Congregational Meeting Minutes

Date: February 4, 2007
Time: 10:35 a.m. – 11:25 a.m.
Place: Emmaus church sanctuary

1. President Chris Lamberton opened the meeting and Pastor Mary led the devotions.
2. Minutes of the congregational meeting held February 5, 2006 were approved as written.
(Motion 2:1:07)
3. Pastor's Report — Written report submitted.
 - a. Pastor Mary thanked the congregation members for their faithfulness in ministry, their support financially, and their saying "yes" to the call of being God's people.
4. President's Report — Written report submitted.
 - a. Chris Lamberton emphasized his hope to "Grow the church" in the coming year. He also stated that Emmaus ended 2006 in a financially sound position and thanked everyone for their support.
5. Recognition of 2006 Church Council.
 - a. Church council members were introduced and thanked. Special appreciation was given to Kathy Christensen who is leaving the council after many years of serving.

6. Election of 2007 Church Council

Nominations were opened with Valerie Crehan being nominated from the floor for Member Care. (Motion 2:2:07)

The following slate of council members for 2007 were accepted as presented:

President	Chris Lamberton
Vice President	Randy Sanders
Secretary	Cathy Meyer
Treasurer	Carolyn Wooster
Financial Secretary	Michele Kreimer
Building & Grounds	Ron Jensen
Congregational Fellowship	Julie Field
Member Care	Valerie Crehan
Social Concerns	_____
Stewardship	_____
Parish Education	Nancy Smith
Worship & Music	_____
Youth	_____

(Motion 2:3:07)

A nominating Committee of outgoing council members and volunteers, Kathy Christensen, Dennis Kreimer, and Cindi Larsen, was approved. (Motion 2:4:07)

7. Approval of the 2006 Budget Summary

The 2006 Actual vs. Budget Summary financial report was approved as submitted.
(Motion 2:5:07)

8. Financial Treasurer's Report — Written report submitted
The Financial Secretary's report for 2006 was approved as submitted. (Motion 2:6:07)
9. Approval of Proposed Budget for 2007
 - a. The budget for 2007 was reviewed with an explanation by Pastor Mary that outreach programs are paid by grants. An additional comment from the congregation encouraged Emmaus to embrace programs and people within Emmaus in addition to outreach programs. The proposed budget was approved as submitted (Motion 2:7:07)
10. Unfinished Business — None
11. New Business
 - a. Randy Sanders presented information on the Collaborative Ministry with other north side Lutheran churches. He explained that it was a way to see how we can work closer together. An example of this would be a shared confirmation program. There will be a meeting February 17 at Emmaus for further discussion with leaders from St. Andrew, St. Paul's and Emmanuel.
 - b. Emmaus congregation reviewed and accepted the Covenant of Congregations of the Racine Mission Cluster of the ELCA. (Motion 2:8:07)
 - c. Pastor Mary provided information on the upcoming Transition/Listening/Visioning process for Emmaus that will be led by Sandy Roberts of Christos Ministries. This will be an opportunity for us to listen to each other regarding concerns and where God is leading us. We are taking everybody seriously, not just outreach, so we need everyone to be a part of this.
 - d. Cathy Meyer introduced the updated Constitution. The new document was based on a model provided by the ELCA. Because the Bylaws have not been updated, the congregation did not vote on adoption at this time.
12. Closing.
 - a. A closing prayer was led by Pastor Mary.
 - b. A motion was passed to close the annual meeting. (Motion 2:9:07)

Respectfully submitted,
Cathy Meyer, Church Council Secretary

Covenant Congregations of the Racine Mission Cluster of the ELCA

Preface: John 17:20-21 (CEV)

"I am not praying just for these followers. I am also praying for everyone else who will have faith because of what my followers will say about me. I want all of them to be one with each other, just as I am one with you and you are one with me. I also want them to be one with us. Then the people of this world will believe that you sent me . . ."

As member congregations of the ELCA in the greater Racine community we are called to be agents of grace in our community and beyond. We celebrate, recognize and value each congregation's history, ministry and gifts. We acknowledge a deep and profound connection to each other. We promise to seek to be the body of Christ in this place and time. In witness to our Lord Jesus Christ, we unite together in this ministry covenant . . .

1. To focus our corporate lives on the mission of Jesus Christ and to take whatever steps necessary to ensure the flowering of grace in our community and world.
2. To reach out in our respective communities to invite and welcome our neighbors to join with us in worship, mission and ministry.
3. To intentionally seek justice for all people.
4. To stand against racism and all forms of oppression.
5. To serve all those in need especially the unemployed, the aging, the hungry, the homeless, and the abused.
6. To abandon competition among congregations and share the gifts and blessings God bestows on us.
7. To share, as the Body of Christ, programs, ministries and resources to carry out our congregational responsibilities and mission.
8. To affirm our ecumenical and interfaith connection and commitments.
9. To develop common strategies for the future so we may be more effective in our witness and service.

Pastor's Report by Rev. Mary L. Janz

There are times, when finding oneself in the midst of many endings and new beginnings, it can be a challenge to be in the middle of it all. This past year Emmaus has experienced what it is to be in the midst of both endings and beginnings. We have known what it is to experience deep loss, and we have also had cause to celebrate new life and possibilities.

We pause to acknowledge that it is only the faithfulness of our God who goes before us and leads us that will move us from mourning to a place of new hope.

The losses this past year include the death of our friend and beloved custodian, Kerry Hunter. We also faced the reality of the dissolution of our Emmaus Women's group and that of the Racine WELCA (Women of the ELCA) group. We struggled with the viability of our Sunday School, and this past fall made the decision not to continue Sunday School at this time. Then, at year's end, we learned that Joyce Kaiser would be stepping down as organist after 34 years of faithful service. These losses, along with others, have been very real and they do affect our church community.

What is so incredible about being the church is that God continues to work and to move, even in the times of death and loss, reminding us that we are a resurrection church. Only God can move us to new life, and that is what gives us hope.

Where are those signs of hope? For all who are able to open their eyes, the signs can be witnessed in the fabric of who we are. We have seen God at work:



- as 11 children and three adults were baptized at a powerful Easter Vigil service
- as funding for our neighborhood outreach ministry has come to us from the national headquarters of the ELCA, the Synod Outreach for Hope Fund, the Siebert Lutheran Foundation and the Lighted Schoolhouse Program
- as the four ELCA northside congregations have continued conversations and worked toward more collaboration
- as 34 new members were welcomed into the Emmaus community
- as Claranna Vytlačil's internship in the Associate in Ministry program led to her approval by the ELCA. She began as our head teacher for EASY (Emmaus After School for Youth) in September and has been recommended for call by our church council
- as generous designated gifts provide for a chancel facelift and a working fireplace in the Fireside Room

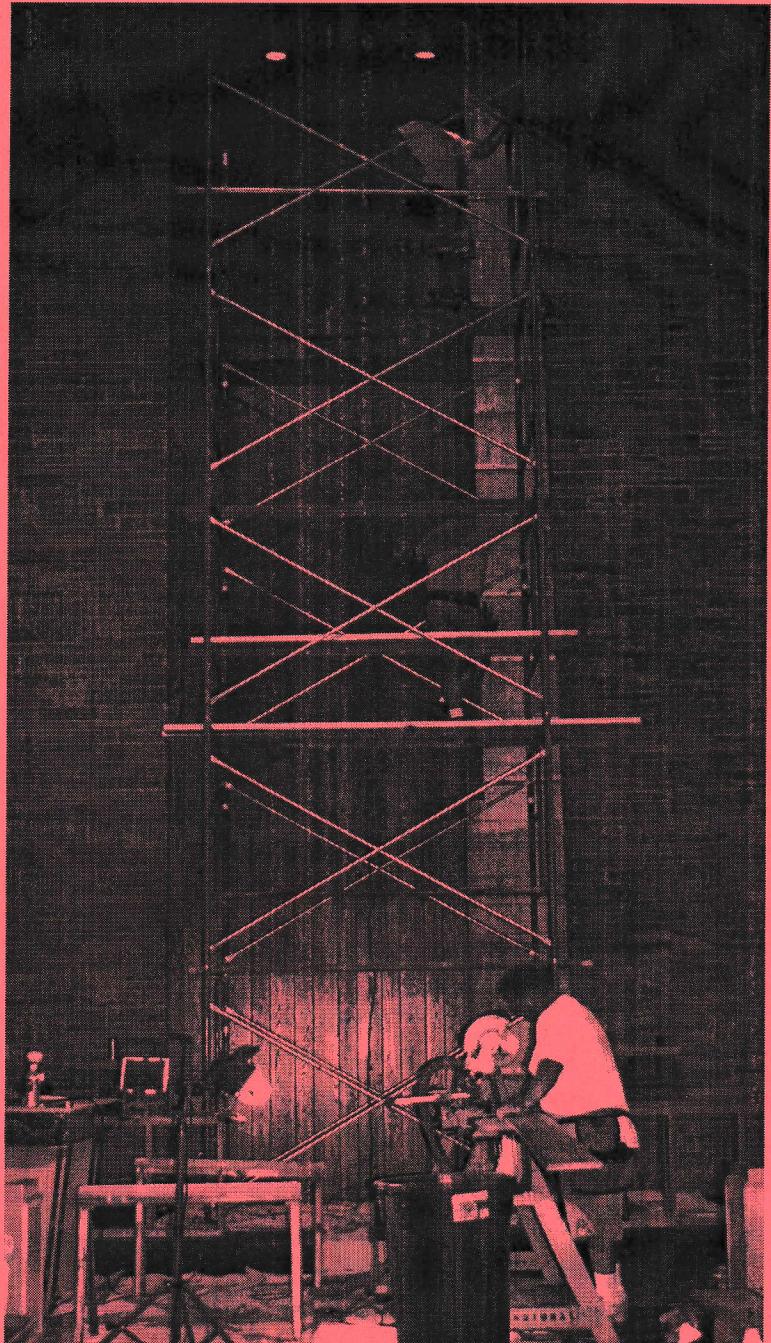
- as knitters show their care and compassion through the gifts of prayer shawls, caps, mittens and scarves
- as our summer Neighborhood Camp and our Wednesday Camp continue to thrive and grow
- as the number of adults meeting for weekly Bible studies grows
- as plans are being made for 25 First Communions
- as Carol Yust, together with family and friends, serve 75+ people dinner every Wednesday

I am so grateful to the staff and volunteers who sense God's call and who are partners in God's proclamation of the resurrection among our community

I give God thanks for all those who support the ministry of Emmaus through their prayers, their time and their money. Thank you to Paul Berge, Valerie Crehan, Nancy Smith and Claranna Vytlacil and all who support them — for so much of what happens at Emmaus during the week. A special thanks to Joyce Kaiser, Suzanne Landis, the Adult Choir, Willy Mueller and the volunteer musicians and worship leaders for sharing the gift of music each week. And to all who work behind the scenes, I express my appreciation and gratitude. Hours and hours are spent by Carolyn Wooster (Treasurer) and by those who mentor, who cook, who serve on Altar Guild and who week the flower beds, not to mention the myriad of other generous gifts that are shared each and every week. You are truly amazing, and I give God thanks for each and every one of you.

I pray that we will look to 2008 as a year of even more new beginnings as we shout to the world — “We are sons and daughters of the Resurrection!”

Your servant in Christ,
—Pastor Mary



Outreach Pastor's Report by Rev. Walter Hermanns

I'm so grateful to be part of the outreach ministry program at Emmaus Lutheran Church! There is a sense of excitement on Wednesday evening that is hard to describe.

- You can taste it as we share a meal together. Those who prepare the meal for us know that their hard work is a vital and much appreciated part of the program. There is always plenty of nutritious and tasty food to eat. For some families, this Wednesday evening meal is their biggest meal of the week. We all enjoy sharing fellowship and laughter across the table and across cultures.

- You can hear it in the lessons, songs, and activities that take place for different ages. "Wednesday camp" combines the best of our summer neighborhood camp program and Sunday school to offer instruction for the children. At the same time two separate adult classes meet for Bible study and discussion.

- You can see it in the faces of the children and adults as we gather for worship. Often the children perform a skit relating to the theme of the day. We sing and pray and listen to God's Word for us. One of the happiest times is during the exchange of Peace. People tumble out of the pews to exchange handshakes and hugs.

- Of course, outreach is not limited to Wednesday evening. We have been blessed with new members who have joined the Emmaus family. I hope and pray that we continue to invite guests, welcome visitors, and reach out to those who live nearby. We have also begun to see ourselves as part of the larger ministry of the ELCA in Racine. One highlight of this cooperative effort was

a joint worship service of the four Northside churches during the summer. Hosted by Emmaus, we followed a lively worship service with a neighborhood carnival, featuring games, crafts, and food.

The highlight of the year for me was the Easter Vigil. On this amazing, Spirit-filled night, 14 people were welcomed into the Church through the Sacrament of Holy Baptism. Below is a letter that I wrote about that night, which appeared in the *Racine Journal Times*.



An Open Letter to the Kids Who Will Be Baptized At the Easter Vigil, Emmaus Lutheran Church, April 7, 2007

Water. Oil. Stories. Fire. Darkness. Light. Did I say water? The night before Easter will be one of the most important nights of your life. You may not think that a few splashes of water can do much of anything, but believe me they can turn the world around! The night will begin outside as we gather around a bonfire, whose flames will remind us of the chaos before God's creative words spoke forth the universe.

From this fire we will light a new candle: just as God did Something New by raising Jesus from the dead. We'll sing to that candle, the Light of Christ, and follow it into the darkened church building. *[When I see the darkness, I'll be thinking about how so many of you have already faced struggles in your lives. The whole world feels dark when your Dad is gone and your Mom can't find work, or when*

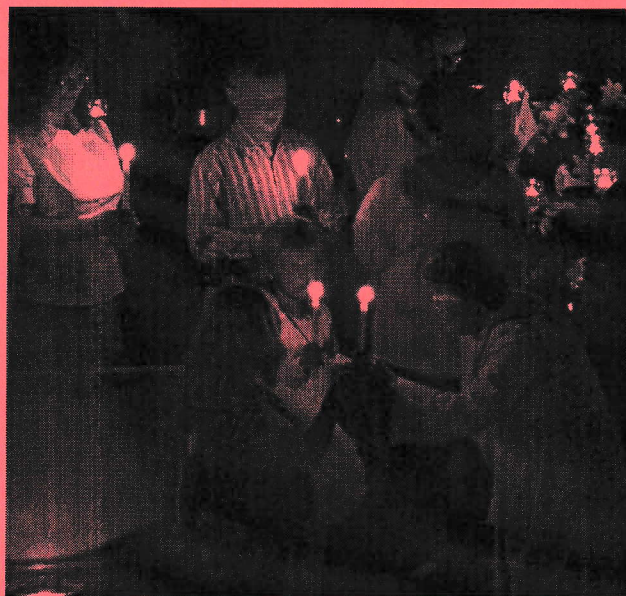
disabilities challenge your life, or when you wake up to gunshots outside your house at night, or when kids at school "gun at you" by making fun of how you look or what language you speak]. As we move into the dark building, will see how a single candle can chase away the darkness. I'll thank God that you are here, that we are together, and that God's Light is brighter than any darkness we will face. Soon the light from that one big candle will be spread to each one of us as we each hold a candle burning against the darkness.

After that we'll tell some family stories — about the human family we have in common. We'll hear stories that tell about times when we searched for God and found that God was there all along. We'll tell how God never gives up on us even when we make mistakes or try to run away. [As I hear these ancient family stories, I'll think about how many of you come from families that aren't the traditional "Mom and Dad, married, living in the same house with their kids" family. I'll think about how, sometimes against all odds, you give and receive love in your families.]

Next comes the water! Sprinkled and sprayed water from a waving pine bough. Splashed and spilled water from the pastor's hand to the top of your head. I plan to get you as a wet as I can because I don't want these waters to ever dry out. Baptism is God's YES to us as unique individuals each with our own special gifts. Baptism is God's WELCOME to us as part of a community made up of all children of God. Baptism is God's HUG which says to us "there is nothing in death or life that can separate you from my love." [I watch with joy as you

begin to discover your own special gifts. I see Angelica caring for her younger sister. I hear Alexis as she sings a beautiful solo. I listen to Stephanie and RyAnn as they read so clearly. I pray that you continue to discover the gifts God has given you. What's really great is that whatever gift God has given us, we can share with the rest of the world. Isabella, you can glorify God and brighten our days as you learn how to walk.] Here's the great thing about the waters of baptism: they won't dry out! Every day when we wake up we can say "I am baptized!" When we take a shower, swim in the pool, or get caught in the rain we can say "I am baptized!"

When everyone has been baptized, the



pastors are going to do something to you which is a little strange and unfamiliar. We'll trace the sign of the cross on your forehead with a thumb that has been dipped in oil. In ancient times kings and priests were anointed with oil to show that God had blessed them for special service to their

community. Now it's your turn! Our communities of church, city, nation, and world all have great needs. As baptized children of God we are all commissioned to love and serve in our communities. [I can see this happening in you already! Christina, I see it in you as you light the candles on Wednesday evenings. David, I see it in you as you have become an advocate for Children's Hospital after your surgery. Matthew, your quick mind and willingness to speak out (which sometimes get you in trouble now) can be used to address injustice]. The mark on your forehead is important! Others will almost certainly try to "mark" you in your life.

People are always deciding who is in and who is out. You will be tempted to join them in this evil game by thinking less of others who are on the outside of your group. At those times, remember the mark on your forehead and remember how Jesus treated those who were on the “outside.”

After that, someone special in your life will come forward. They will take a candle and light it from the big “Jesus Candle” that has been burning in our midst. As they place it in your hands we will say the words that Jesus said long ago. “Let your light so shine before others that they may see your good works and glorify your Father in heaven.” We will celebrate that it is the Light of Jesus Christ that burns within us. In our good deeds great and small, and even in our mistakes we can allow that light to shine. *[Sometimes it's the little things we do that help others on their way. Sydni, more than once you have given me a smile and hug that lifted my spirits.*

I know that you already understand what it means to “let your light shine”].

The candles that we hold in our hand will brighten the darkened church. We'll be able to see the beautiful flowers that stand ready to greet us on Easter morning. Long ago, Easter vigils lasted the entire night and ended only as the sun rose and filled the world with its light. We will bid you good night so that you can go home and get some rest. But we will hope to see you again in just a few hours. Along with many other churches, we will celebrate the “tail end” of the vigil by having a sunrise service.

Surrounded by beautiful music and your new brothers and sisters in Christ, you will begin to learn how those splashes of water have changed you. Your baptism will have changed us as well, because we will remember that we too live our lives still wet, still marked, and still aglow!



Council President's Report by Chris Lamberton

It has been another rather fast year for Emmaus. A lot of things have occurred over this, my second year.

- Northside Synergy churches
 - o Emmaus
 - o Emmanuel
 - o St Andrews
 - o St Paul's
 - Meetings
 - Collaboration
 - Joint carnival
 - Planning joint Easter service
 - Working together to strengthen all churches
- Wednesday evening program continues to grow
 - o Total numbers of attendees increase
 - o Potential new members
 - o Emmaus members join in
 - o New members increase
 - o New ideas are shared
- New members overall
- New improved landscaping
- Continued success with summer camp
- Successful youth mission trip
- Just to name a few . . .

We are always in need of your continued support for the growth of Emmaus and its good works.

Potential growth opportunities for you:

- Join church council
 - o Many positions are available for energetic individuals who wish to make a difference
 - o Both chair positions and help for the chairs
- Assist with church activities
 - o Wednesday night preparation/clean up
 - o Summer camp
 - o Sunday school?
 - o Among many others . . .
- Contribute to the growth of Emmaus

- Provide valuable input to improve Emmaus
- Searching for 'techie's to help put together a new Sunday church service format

And thanks go to . . .

- Pastor Mary
- Paul Berge
- Our custodians
- Buildings and grounds
- Worship and Music
 - o Highlighting the retirement of our organist of 34 years, Joyce Kaiser
- All council members
- And to all of you for your support through my years as President

Church is not only for Sundays. Please plan on participating in the many opportunities at Emmaus throughout the week.

Emmaus is strong and will continue to be strong with active participation from you, the congregation.

Get involved!

Please allow your council to be even more effective by sharing any comments/suggestions wither positive or concerns.

It has been a pleasure to serve as council president. I never imagined how enjoyable it would be, being an active part of Emmaus as Council President.

With God's help and continued support from the members of Emmaus, we will continue to do God's good works and the sharing of the good news of Christ.

God speed.

—Chris Lamberton

And on a special personal note: Thank you all for all your prayers and words of encouragement, from me, my wife Caren, and my mom, Joyce Lamberton. This past year has brought health back to my family.

— Chris Lamberton

Building & Grounds Annual Report by Ron Jensen

- Routine maintenance was done on the church proper and the parsonage, as well as the equipment for lawn cutting and snow removal.
- Drywall repair was done in the main entrance due to water damage from a heavy summer rainstorm.
- The retaining wall in the parking area on the east side of the church was rebuilt.
- A basement window and the door to Valerie's office were both repaired due to vandalism damage.

- Some downspouts on the church were stolen and required replacement.

Thank you to all who have contributed this past year to the maintenance of our buildings and grounds.

Respectfully submitted,
—Ron Jensen
Committee Chair

Christian Education Committee Report by Nancy Smith

2007 was another year of transition. In September the format of offering two religious education hours was combined into the weekly Wednesday Camp evening program. During the school year, 2006-2007, the Sunday school population was declining. Attendance was intermittent. Some weeks there were only 8 children present. To prepare lessons and instruct such small groups was becoming a disappointment and frustration for teachers. In September the decision was made to concentrate efforts on the Wednesday evening program which is open to all families from Emmaus and the neighborhood.

This year the curriculum included units on word and sacrament. In January the Sunday and Wednesday kids explored units in Baptism. During Lent the emphasis was on the Last Week of Christ. After Easter the Sunday kids studied God Makes a World while the Wednesday kids learned about some of the miracles of Jesus.

Wednesday Camp, which meets in the evening, has an enrollment of 33 kids. They

spent a portion of the fall semester studying the Lord's Supper. They learned about the early years of Moses and the events that led up to the Passover and how that special meal later became known as the Lord's Supper when Jesus shared bread and wine with his disciples.

Staffing also has undergone change. Nancy Smith continues to be assisted by Claranna Vytlacil. Joining the teaching staff this year is Julia Perkins from the Youth Encounter Team; Rebecca Ruidl, a student at Marquette and an Emmaus Neighborhood Camp intern; and Kristen Clinton, an Emmaus member.

Something new: This fall a middle school group was formed. Anthony Eder from the Youth Encounter Team with the assistance of Sandi Strini and half a dozen kids meet on Wednesdays. The evening begins with a drumming circle. After supper they adjourn to the youth room for a variety of activities and discussions all geared to exploring their faith journey.

Service projects included: Lenten money given to Julia Burney's Cops 'n' Kids program (Julia came to accept the money and read her famous kid participatory version of *Green Eggs and Ham*); a donation to Make A Wish Foundation; Thanksgiving baskets distributed to needy families in the neighborhood; and the celebration of Earth Day by ridding the vegetable garden of debris and the planting of pansies in various beds and pots.

One of the highlights in 2007 was the Easter Vigil service in which many of the children participated as candle lighters, readers and singers. African drummers from All Nations also participated in this service which began in total darkness. There were



14 baptisms: eleven children and three adults.

The year concluded with a presentation of *the Christmas Clinic*. This musical story told of various patients who had a variety of unusual ailments that reminded the doctor and her assistants of various scenes from the Christmas

story. With a backdrop of a living nativity the kids acted, read from scripture, sang and played kazoos. The clinic's message: God will be there to help us.

—Nancy Smith
Committee Chair





Stewardship Progress Report

Figures below are calculated from pledges received as of January 22, 2008.

Year ¹	# of pledges total	Average \$ per pledge per year ²	Total pledged dollars ²	Total actual giving ³	Average attendance ⁴
2008	63	\$2,043.28	\$126,183		
2007	90	\$1,939.41	\$136,988	\$171,721.18	130
2006 ⁵	93	\$1,685.17	\$151,665	\$180,925.00	102
2005	90	\$1,690.62	\$150,465	\$177,600.55	111
2004	92	\$1,529.37	\$140,702	\$185,590.66	130
2003	101	\$1,486.83	\$150,170	\$161,446.30	140
2002	99	\$1,470.44	\$145,574	\$166,062.94	142
2001	117	\$1,290.60	\$149,709	\$152,609.97	155
2000	118	\$1,276.20	\$150,592	\$169,392.16	160

¹ The year during which the pledge is in effect.

² Pledges to the General Fund.

³ General envelope total plus Non-pledged general offering/Loose cash; source: Treasurers' end-of-year income reports.

⁴ Averages up to 2006 include Saturday and Sunday services plus Christmas Eve services divided by 52 (53 in 2006). Averages for 2007 also include midweek services. Saturday, 12/31/05 is included within the average for 2006.

⁵ There were 53 Sundays in 2006, resulting in a one-year-only increase in the amount pledged by persons who pledge on a weekly basis.

Outreach Ministry Report by Valerie Crehan

Emmaus After School for Youth

September 2007 began our sixth year of after school programming at Emmaus. We continue to receive support from the Lighted Schoolhouse Program of Racine and through a grant from the Evangelical Outreach for Congregational Ministries and a grant from the Greater Milwaukee Synod Outreach for Hope Fund. Individual donations have paid the registration fees for students attending the Emmaus program.

Twenty-seven children are registered in our program that meets Monday through Thursday, September through May. This September, Claranna Vytlačil became the site coordinator for the program. Claranna is an associate in ministry and is working with the children in after school and also in our Wednesday evening programming. Linda Jaskulske and Maribel Velasquez are the adult assistants and are members of Emmaus. Nearly all of the students who attend after school programming also attend Wednesday evening Bible study, dinner and worship. After school programming has proven to be a doorway from the neighborhood into Emmaus Lutheran Church.

Wednesday Night Camp

Wednesday Night programming began its third year this September. An evening meal is served followed by religious activities and study for children and adults. After Bible study, there is an evening service in the sanctuary. Families from Emmaus and families from the neighborhood join together for fellowship and prayer. There were 14 baptisms this Easter Vigil; most of those baptisms were a direct result of Wednesday Night programming. Many

families joined the church this past November that regularly attend or volunteer on Wednesday evenings.

Nancy Smith coordinates the programming for children with the help of Claranna Vytlačil. Sandy Strini coordinates programming for middle school children. Pastor Walter and Pastor Mary conduct Bible class for adults and conduct the evening worship service.

This September began a new collaboration among three churches; Emmaus Lutheran Church, Our Savior's Lutheran Church and Lutheran Church of the Redeemer. A team of young adults were brought in from the Youth Encounter Organization (out of St. Paul, Minnesota) to share their time with these three churches

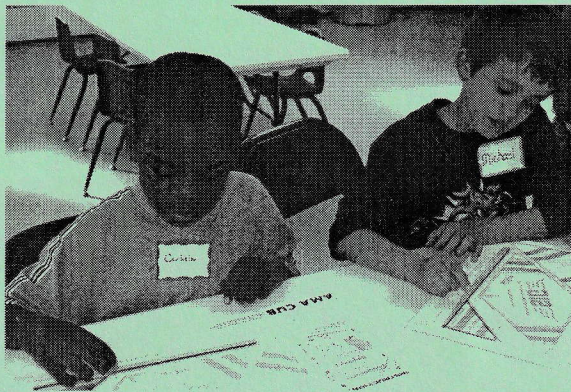
and to work with youth.

This team has been helping at Emmaus with after school students and with religious programming and the church service on

Wednesday evenings. Kristin Clinton, Rebecca Ruidle, Paul and Maribel Velasquez round out the staff that helps to make this programming happen.

Carol Yust and her family have also dedicated their Wednesday evenings to outreach. Every Wednesday evening, they shop, prepare, serve and clean up after the evening meal. Many Wednesdays over 75 dinners are served. Their help and dedication has been inspiring and delicious!

All funding for this program comes from grants, free-will offerings and individual donations. The Greater Milwaukee Synod Outreach for Hope Fund



and the ELCA Evangelical Outreach and Congregational Mission Fund have been a major contributors. The Siebert Foundation grant has funded a major portion of the Youth Encounter Team participation and individual donations have helped with food and programming costs.

This program continues to grow and provides real opportunities for the Emmaus congregation to connect with neighborhood families and for new families to find their way to a welcoming church family.

Neighborhood Camp at Emmaus

Neighborhood Camp 2007 was full of excitement and participation. Fifty-two children, ages 6-11, participated in five weeks of camp here at Emmaus. Sixteen teens, three adult staff and young volunteers participated in God Time, enrichment activities, and field trips. Many adult volunteers from Emmaus and camper families prepared and served meals to 60 or more, hungry campers and staff. All this programming is free to the campers.

Campers and staff went on a field trip once a week. This summer they went to: a Brewer's game (for most campers their first), The Milwaukee Public Museum, Discovery World, St. Monica's Senior Center and the beach. These field trips offer children opportunities to expand their world. Some of our campers rarely leave their own neighborhood so this is a highlight for them and something they remember for a long time.

The children decided to collect coins and cans for a family in Tanzania to purchase a calf. They reached their goal of \$500 and it was sent to Tanzania. An Emmaus member matched that amount and the village received money for two animals! The children also made blankets that were donated to the Children's Hospital of Milwaukee. Those children that we serve also experienced the joy of serving!

Once again Emmaus members and friends of Emmaus generously contributed their time, money and talents to these deserving children and as God's love and blessings surround us all.



Sunday School Treasury Report

Beginning Balance, December 31, 2006	\$194.42
Receipts:	
6/7/07 Deposit	\$108.00
Total Receipts	\$108.00
Disbursements:	
1018 Make a Wish Foundation	\$250.00
Total Disbursements	<u>(\$250.00)</u>
Ending Balance, December 31, 2007	\$52.42

Youth Account

Beginning Balance, December 31, 2006	\$5,625.41
Receipts:	
1/9/07 Transfer	\$56.00
2/19/07 Deposit	\$525.00
2/22/07 Deposit	\$456.00
5/7/07 Deposits	\$5,213.00
5/14/07 Deposit	\$355.00
6/7/07 Deposit	\$355.00
7/3/07 Deposit	\$750.00
7/18/07 Deposit	\$1,300.00
8/9/07 Deposit	\$300.00
Total Receipts	\$9,310.00
Disbursements:	
1072 iPod for Fiesta Mexicana	\$120.00
1074 Grill for Fiesta	\$160.00
1075 Air fare deposit	\$700.00
1076 Gaming permit	\$25.00
1077 YouthWorks initial deposit	\$1,335.00
1078 Gas cards for Fiesta Mexicana	\$300.00
1079 Sam's Club for Fiesta	\$91.00
1080 Piggly Wiggly for Fiesta	\$251.45
1081 McDonald's	\$73.49
1082 YouthWorks final deposit	\$1,335.00
1083 Mission trip air fare	\$3,370.30
1084 For mission trip	\$500.00
1085	\$1,806.55
1086 Mission trip refund	\$100.00
1087 Mission trip	\$167.39
1088 YouthQuake registration	\$315.00
Total Disbursements	<u>(\$10,650.18)</u>
Ending Balance, December 31, 2007	\$4,285.23

Pick 'n' Save "We Care" Receipts for 2007

January	April	May	September	December	TOTAL
\$61.21	\$59.70	\$62.04	\$63.23	\$57.49	\$303.67

Our Pick 'n' Save number is 205100.

WELCA Account

Beginning Balance, December 31, 2006.....	\$1,559.61
Receipts: None	
Total Receipts	\$00.00
Disbursements:	
✓#1161 11/2/07.....	56.81
Total Disbursements	<u>(\$56.81)</u>
Ending Balance, December 31, 2007.....	\$1,502.80



Racine Family Literacy Annual Report by Richard Marciniak

History: Racine Family Literacy was formed in 1996 as the federally funded Racine Even Start Program by partners RUSD and Gateway Technical College. The long term goal was to break the cycle of intergenerational poverty by providing a comprehensive, integrated literacy program for low income/low literacy Racine families. In 1996-1997 Federal dollars provided 90% of funding with a matching 10% provided locally. In 2006-2007, Racine Family Literacy's local support has grown to 96% of program costs.

In 2004, Racine Even Start became independent, changed its name to Racine Family Literacy, and moved to Emmaus Lutheran Church, for the first time enjoying an onsite office and classrooms solely dedicated to RFL's goals.

Program Overview: RFL provides the four components of family literacy: early childhood education, adult education, parenting education, and PACT (Parent And Child Together time). A fifth key program is Home Visitation/Family Support. Families are visited 3-4 times per year, for goal setting/review and two in-home assessments of children birth to 5. Additional support/home visits are available upon request.

Children's classes:

birth-3 room 3-5 year old preschool
K-2nd grade room 3rd grade+ room

Adult classes:

Beginning ESL
Intermediate/Advanced ESL

Racine Family Literacy runs from September through May. Business hours are 9:30 a.m. to 5:00 p.m. Tuesday, Wednesday, and Friday; 9:30 a.m. to 8:00 p.m. Monday and Thursday. Program hours are 5:15 to 7:45 p.m. Mondays and Thursdays.

Mission: To provide [low income/low literacy] families with the literacy and life skills necessary for success in today's world.

Goals: 1.) preschoolers school ready; 2.) school age children at grade level — no "achievement gap"; 3.) adult increase literacy skills; 4.) families improve interactions, both within the family **and** with the community. These goals create strong families — families that can provide the educational, economic, and emotional support necessary to raise healthy, safe, successful children.

Executive Director's Report: 2006-2007 was another year full of challenges and successes for Racine Family Literacy.

- Executive Director wrote 15 grants. Grant dollars increased with additional funds coming from United Way, Dominican Mission Fund, Dollar General, CAP Fund, and the Roundy's Foundation. See green page 8 for details.
- Net income for 2006-2007 of \$13,209.41. However, this includes \$10,000 of grants received specifically for and carried over for fall 2007 expansion.
- Monthly book giveaway continued with books donated by Scholastic Books, First Books (nationally and locally) and Reading Is Fundamental in 2006-2007.
- Racine Family Literacy began in home developmental assessments done with parents for all children birth to 5. RFL now provides direct, ongoing services for each of Success by Six's three "Quality Systems": health care, social services, and education. This and other changes have moved RFL from being a "program" to an organization providing comprehensive social services.

- Emmaus Lutheran Church became fiscal agent with RFL Executive Director taking over the daily bookkeeping. Fiscal information has improved.
 - The social climate impacted instruction. With new driver's licensing laws and less work available, many families served had problems with transportation, as well as greater financial difficulties and less time and resources to attend school. Average income of families served decreased \$5,135. RFL provided small amounts of free food once a month (Racine County Food Bank).
 - In 2006-2007, Racine Family Literacy served: 111 participants unduplicated; 2,802 duplicated; with 5,560 hours of class and home visitation (direct contact) time. (For simplicity's sake, home visits were counted as serving one, although many provided services for multiple members of the family.)
 - Home visitation increased from 57 in 2005-2006 to 87 in 2006-2007, due mainly to new in-home child development assessments.
 - Expansion planned for 2006-2007 with one additional adult class and one children's class to be added. Final funds available to be determined.
- RFL Achievements/Highlights**
- August, 2006: RFL provided school supplies to all continuing families for the fifth consecutive year.
 - October, 2006: RFL received a United Way "health" grant to do Ages and Stages assessments in the home with parents for children 0-5.
 - November/December, 2006: fund raising appeal raised \$1,650.00.
 - January, 2007: Received a \$5,000 Roundy's Foundation grant to expand the Adult Education Program in September, 2007.

- February, 2007: Prevent Blindness visited, providing free vision screenings for adults (and glaucoma test)/children. Lenscrafters' Gift of Sight Program provided free eye exams/glasses for five adults.
- February, 2007: Reading is Fundamental grant renewed second year: funds book giveaway and RFL libraries. First year focused on a fourth grade library. Second year continues work on that and a 1st grade library.
- March, 2007: Racine Health Department nurses visited for second time to do tooth enameling for children. Referrals made for further services.
- April, 2007: Creation of RFL website www.racinefamilyliteracy.com
- May, 2007: End of year assessment: see green page 7.
- May, 2007: Received Dollar General grant of \$5,000 for fall expansion.
- May-June, 2007: Spring fund raising appeal raised \$1,324.41.

Visitors, Field Trips, Parent Education, Family Activities

September

Mexican Independence Day

October:

Fire Station field trip
Developmental workshop
Day of the Dead Fiesta

November:

Pick-n-Save field trip
10 minute Parent/Teacher conference video and workshop
Racine Area Soccer Association visit and soccer activity

December

Racine Health Department — tooth enameling on site
XMAS party

January

Gymnastic field trip
Girl Scouts — Miriam Perales Handley

February

Dora Garcia, City of Racine Housing Dept. — home buying, etc.
Prevent Blindness of Wisconsin vision screenings

March

Racine Health Department — tooth enameling on site

April

Racine Public Library field trip
Spring (Easter) PACT activity

May

Cinco de mayo celebration
Proper Paws University
Student and volunteer recognition

2006-2007 Data: Population served: duplicated 2,802; 111 unduplicated; 31 families with 41 adults and 70 children. Nine families had multiple adults attending.

- Ethnic/racial breakdown by family: 96% Latino, 4% Asian.
- Grade level completed: 3rd-5th grade—9%; 6th-8th grade—55%; 9th-11th grade—27%; high school degree or higher—15%.
- 86% of families below U.S. poverty guidelines—up 14% from 2005-2006.
- 100% of children eligible for free/reduced lunch (under 185% of poverty).
- Average income—\$17,460 down \$5,135 from 2005-2006; average family size—5. U.S. poverty guideline for family of 5 is \$23,400.

Outcome #1: Adults increase life skills.

Indicator: reviewed family goal plan on file:

- 92% (33 of 36) have set and evaluated goals.
- 67% (14 of 21) assisted children more frequently with school
- 94% (17 of 18) scored “favorably” or better on nationally normed Parent as a Teacher Inventory.

Outcome #2: Adults will increase their literacy skills and activities. **Indicator:** pre

and post tests on BEST (Basic English Skills Test) or TABE (Test of Basic English):

- 83.3% (15 of 18) increased score on BEST test
- 71.4% (10 of 14 pre and post tested) increased a level on BEST test (4 excluded who started at top level)
- 100% (21 of 21) read to children in past month
- 62% (13 of 21) reported “increased involvement in children’s school”
- 81% (17 of 21) had increased contact with children’s teachers

Outcome #3: Adults will increase their resources to support children’s literacy.

Indicator: exit surveys of adults in program.

- 95% (20 of 21) have library cards
- 0% have 0 children’s books in home; 32% have 1-10; 21% have 10-20; 42% have 20-50; 5% have more than 50 (when families start, almost 100% have less than 10 books.)

Outcome #4: 0-5 year olds demonstrate proper development. **Indicator:** Ages and Stages Developmental Screening done in homes with parents:

- 23 children screened: 22 (96%) demonstrated proper development; 1 (4%) referred to RUSD for speech and language testing. 1 (5%) tested three times; 9 (47%) tested two times; 13 (47%) tested one time. (4 children who were tested once were excluded from calculations of percents because they were beyond testing age for second screening and could only be tested one time.)

Outcome #5: 3-5 year olds demonstrate school readiness. **Indicator:** Pre and post “test” on Child Observation Records:

- 86% of preschool children improved one level on at least 4 of 8 Literacy Scales.
- 86% improved at least one level on 4 or more of 8 Math Scales.

- 86% improved at least one level on 4 or more of 8 Initiative/Social Relations Scales.

Children averaged a gain of 1.45 levels/scale. All children met goal except for two youngest who were mainly working on learning English.

Major Funding for 2006-2007

Grants:

- United Way of Racine County
- Dominican Mission Fund

Contracts:

- RUSD Title 1
 - RUSD Lighted School House
- In Kind support:

- Gateway Technical College (\$8,543—2 ESL adult instructors)
- Emmaus Lutheran Church (rent, custodial services, insurance, fiscal agency)
- Racine County Food Bank (\$3,648 food in kind)

Grants Written in 2006-2007

Written	Rec'd	Denied	Pending
1. City Development Block Grant		✓	
2. United Way Health grant Fall addition and spring addition	✓ ✓,✓		
3. Roundy's Foundation	✓		
4. CAP Fund	✓		
5. First Books	✓		
6. Junior League	✓		
7. United Way	✓		
8. Dominican Mission Fund	✓		
9. Dollar General	✓		
10. AT&T Exceleator			✓
11. Reading Is Fundamental	✓		
12. Target Foundation			✓
13. Patrick and Anna M. Cudahy Fund		✓	

Staff:

Administration:

Richard J. Marciniak, Executive Director
Maribel Velasquez, Home Visitor/Program Assistant

Early Childhood Staff:

Maria Cruz, infants
Anne Marie Reynoso, infants
Alisha Janicek, preschool

Tammy Hart, K-2nd grade
Lee Mulder, 3rd-6th grade

Adult Education Staff:

Nadine Thompkins
Kay Miller

Volunteers: 196 hours of classroom assistance and program support in 2006-2007. Volunteer Center of Racine and Case High School Honor Society were main providers.

Board of Directors

Reverend Mary Janz, President

Emmaus Lutheran Church
1925 Summit Ave., Racine, WI 53404

Kathy Dunkerson, Treasurer	634-5515, mljanz@aol.com RUSD, Director, Extended Day Programs 2330 Northwestern Ave, Racine, WI 53404 664-6990, kdunkers@racine.k12.wi.us
Directors: Anne Callaghan	Librarian, Racine Public Library 75 7 th Street, Racine, WI 53403 636-9245, acallagh@racinelib.lib.wi.us
Fabiola Diaz	Nutritionist, UW-Extension Nutrition Program 1220 Mound Ave., Racine, WI 53404 635-6824 (w), fabiola.diaz@ces.uwex.edu
Mary Lofty	Executive Director, Racine/Kenosha Child Care Resource & Referral 740 College Ave, Racine, WI 53403 884-9893, mary@ccrrs-rk.org
Brenda Wilkinson	Public Health Nurse, Racine Health Department 730 Washington Ave., Racine, WI 53403 636-9201, brendawilkinson@cityofracine.org

**Racine Family Literacy
Balance Sheet
As of June 30, 2007**

June 30, 2007

Assets	
Current assets	
Checking/Savings cash.....	18,029.50
Total Checking/Savings.....	18,029.50
Current assets.....	18,029.50
Total Assets	18,029.50
Liabilities & Equity	
Equity	
Retained earnings.....	4,820.09
Net income.....	13,209.41
Total equity.....	18,029.50
Total liabilities & equity	18,029.50

2006-2007 Balance Sheet notes:

- * Reporting is on a strictly cash basis
- * \$10,00 (\$5,000—Roundy’s Foundation and \$5,000—Dollar General) received in 2006-2007 was specifically granted for expansion in fall of 2007. These funds are “carryover” and are an integral part of next year’s budget. The funds will be spent on an Adult Education Instructor, classroom materials for an added preschool room, classroom materials for a pre-GED class,

additional Program Assistant time for home visits, 3 additional hours/week for Executive Director, and additional food and other services.

**Racine Family Literacy
 Profit & Loss Budget vs. Actual
 July 2006 through June 2007**

	<u>Jul '06-Jun '07</u>	<u>Budget</u>
Ordinary Income/Expense		
Income		
Book Fees.....	78.00	\$600.00
CAP Fund.....	2,800.00	0.00
Contributions.....	3,905.26	1,910.00
Dollar General.....	5,000.00	0.00
Dominican Mission Fund.....	8,000.00	8,000.00
Junior League.....	200.00	200.00
Lighted School House.....	6,000.00	6,000.00
Reading Is Fundamental.....	750.00	750.00
Roundy's Foundation.....	5,000.00	0.00
Special events.....	75.28	00.00
Title 1.....	15,001.57	15,000.00
United Way	25,875.00	25,875.00
Total Income	72,685.11	58,335.00
Expense		
Administration	98.45	400.00
Banking fee.....	0.20	0.00
Classroom Supplies	3,166.67	3,046.00
Equipment acquisition	798.96	720.00
Field trips.....	90.00	200.00
Food	938.80	800.00
Fund development	373.97	200.00
Memberships.....	150.00	200.00
Occupancy	2,475.00	2,475.00
Office supplies	1,204.20	700.00
Payroll Expenses	48,156.31	48,282.10
Phone/internet.....	335.53	300.00
Professional Fees	264.88	0.00
Special projects	1,614.59	1,032.00
Training	290.00	700.00
Travel.....	493.14	354.00
Total Expense	60,475.70	59,409.10
Net Ordinary Income	12,209.41	(1,074.10)
Other Income/Expense		
Other Income		
Speaker's fees	1,000.00	1,000.00
Total Other Income	1,000.00	1,000.00

Net Other Income	<u>1,000.00</u>	<u>1,000.00</u>
Net Income	<u>12,209.41</u>	<u>(74.10)</u>

2006-2007 Profit and Loss Notes

- Reporting is on a strictly cash basis.
- \$10,000 (\$5,000—Roundy’s Foundation and \$5,000—Dollar General) received in 2006-2007 was specifically granted for expansion in fall of 2007. These funds are “carryover” to next year’s budget. The funds will be spent on an Adult Education Instructor, classroom materials for an added preschool room, classroom materials for a pre-GED class, additional Program Assistant time for home visits, 3 additional hours/week for Executive Director, and additional food and other services.
- Special Events was a Barnes and Noble Book Fair.
- \$1,000 Other Income was one time family literacy workshop the Executive Director provided for the Lakeshore and Mid-Wisconsin Library Systems in August, 2006.
- Fund development expense at 187% of budgeted amount, but RFL raised 182% of expected contributions. Cost was mostly setup for printing envelopes and stationery for mailings.
- Special projects, as a result of cash basis accounting, includes two years of RIF grant funds for a “program” library spent in 2006-2007.

Pastoral Report and Summary of Statistics for 2007

Pastoral acts

Baptisms (child).....	17
Baptisms (adult).....	3
Funerals (member).....	10
Funerals (non-member).....	2

Weddings (member/s).....	2
Weddings (non-members).....	1
Confirmation (youth).....	2
Affirmation of faith (adult).....	2

Church services

Regular Sunday worship.....	53
(26 with Holy Communion)	
Lenten midweek worship.....	10
(3 with Holy Communion)	
Midweek worship (non-Lent/Thx/Xmas).....	21
Saturday worship services.....	50

Thanksgiving Eve.....	1
Christmas Eve.....	2
Funerals in church.....	5
Weddings in church.....	2
Total number of church services.....	144

Total attendance:

Sundays (incl. Easter)	4,120
Saturdays	1,214
<u>Midweek+Holidays</u>	<u>1,846</u>
Total	7,180

	Saturdays & Sundays	+midweek
Average monthly attendance =	440.08	593.33
Average weekly attendance =	101.55	138.08
Average weekly, Sept.-May =	103.10	150.41
Average weekly, June-Aug. =	100.08	100.08

Holy Communion

# of communions given	over 2,672*
# of confirmed members communing	164
# of pre-confirmed members communing	24

*No communion count taken August 5, 2007.

# of confirmed members who communed and contributed	148
# of non-members communing more than once:	18

	<u>Baptized</u>	<u>Confirmed</u>
Total membership as of January 1, 2006	483	350
<u>Members received:</u>		
a. by baptism: children	17	-
b. by baptism: adult	3	3
c. by affirmation of faith	2	2
d. by transfer from other ELCA	12	8
e. by transfer from other Lutheran	2	2
f. by transfer from non-Lutheran	9	7
g. baptized members confirmed	-	2
h. renewed membership	0	0
i. statistical adjustment	<u>2</u>	<u>1</u>
Total members added	47	25

	<u>Baptized</u>	<u>Confirmed</u>
<u>Members removed:</u>		
a. by death	11	11
b. by transfer to other ELCA	0	0
c. by transfer to other Luth. congregations	5	2
d. to non-Lutheran congs.	0	0
e. Moved/no transfer	9	8
f. to inactive status	<u>3</u>	<u>2</u>
Total members removed	28	23
Total membership as of December 31, 2007	502	352

Pastoral Acts 2007

BAPTISMS

Kylie Jean Talbott
Alexis Symone Carroll
Angela Faye *Kosterman Escamilla*¹
RyAnn Faye Mackin
Christina Faith Escamilla
Matthew Robert Escamilla
Stephanie Jeanne De Cubellis
Isabella Hulsey
Joseph Hulsey¹
David Lee Matson, Jr.
Sydni Lea Matson
Angelica Salinas
Melissa Ann Yester¹
Ajay Kumar Kalia
Anikha Kalia
Henry James Perkins
Logan Alan Geiger
Alyssa Kaye Eschmann
Ella Joe Briere
Raigen Paige Spaulding¹ Adult baptism

FIRST COMMUNION

Erin Keller

CONFIRMATION

Ryan Lamberton
Zachary Robinson

MARRIAGES

Ellen Elizabeth Eschmann & Peter
Wayne Whitman
Tanyia Marie Steinke & William
Patrick Boutell, Jr.
Rachel Lee Commodore & Joseph
Wayne Hulsey

TRANSFERS IN (*Italics=pre-confirmed*)

From other ELCA:

Kim Charlene Saylor Howser
Rachel Lee Hulsey
Melissa Ann Lemke
Elizabeth Diane Isaacson Melander
Carol Katherine Kutz Saylor

Cheryl Saylor Vash, *Joseph P. & Jodi
Lynn Vash*

Jerry & Linda Verwey, *Kimberlee &
Shannon*

From other Lutheran:

Elizabeth Karcher Johnson
Sarah Weber

From other Christian:

Dale C. Howser, Sr.
Suzanne M. Landis
Melissa Ann Zielke Porcaro
Stacy L. Steinike
Joseph W. Vash
Maribel & Paul J. Velasquez, *Marilena,
Paul O. & Abel Velasquez*

By affirmation of faith:

Jenness Jones
Aaron Spaulding

Reactivated:

—

Statistical adjustment:

Collin Christman
Theresa Olle

TRANSFERS OUT (*Italics=pre-confirmed*)

To other ELCA:

—

To non-ELCA Lutheran:

Lynn & Jillene Lang, *Mariah Lang,
Justin Murphy & Stacie Murphy*

To non-Lutheran Christian:

—

Non-Christian, No Transfer, Unknown
Address

Dave & Shawn Douglas, *Katie Douglas*
John French
Timothy A. Johnson
Wendy N. Kolbo
Don & Dolly Orth
Ashley Valerio

FUNERALS (*Maiden name in italics*)

Harold Dunham²
Christian Sand Hansen

Funerals, continued from page 2

Kerry David Hunter
Margaret Schuppe Reitsma Christensen
Woodrow H. Roth²
Ruth Mary Louise Burdick Buelow
David H. Anderson
Norman Morris Sorensen
Bernice Toepper Schoenleben Munch

Ruth Josephine Dusky Hlavka
Raymond Lloyd LeRoux
Selma Ruppel Sorensen² Non-member

OTHER MEMBERS REMOVED BY DEATH:

Caroline Jensen Schultz



Financial Secretary's Report

by Michele Kreimer

Emmaus Ev. Lutheran Church Savings Account Detail Bank of Elmwood -1739298	January Beginning Balance 01/01/07	Bank Interest and Charges	Transfer IN	Transfer OUT	December Ending Balance 12/31/07
<u>Mortgage Payments</u>					
Designated - Principal Payments					
Debt Retirement Fund	0.00				0.00
Adopt-a-Sunday	0.00	0.00	0.00	0.00	0.00
Available for mortgage	0.00	0.00	0.00	0.00	0.00
Non designated funds	0.00	0.00	0.00	0.00	0.00
Banking expense	0.00	(15.00)	0.00	0.00	(15.00)
Interest income: CDs	232.16	0.00	0.00	0.00	232.16
Interest income	34.65	24.80	0.00	0.00	59.45
Non-designated total	\$266.81	\$9.80	\$0.00	\$0.00	\$276.61
Designated:					
General Fund	0.00	0.00	0.00	(4,990.80)	(4,990.80)
Siebert Grant	0.00	0.00	0.00	0.00	0.00
Improvements-Church renovations	0.00	0.00	9,745.92	(7,615.00)	2,130.92
Fireside room	0.00	0.00	350.00	0.00	350.00
Building & Grounds	0.00	0.00	6,278.70	(5,851.85)	426.85
Community outreach	0.00	0.00	0.00	0.00	0.00
Capital improvements	800.00	0.00	0.00	(800.00)	0.00
Capital Reserve	0.00	0.00	0.00	0.00	0.00
Worship & Music	0.00	0.00	0.00	0.00	0.00
Organ fund	1,817.19	0.00	0.00	(585.00)	1,232.19
Kitchen Remodel (upstairs)	0.00	0.00	0.00	0.00	0.00
Choir fund	340.00	0.00	0.00	0.00	340.00
Choir robes	0.00	0.00	0.00	0.00	0.00
Tape ministry	0.00	0.00	0.00	0.00	0.00
Projector	0.00	0.00	1,000.00	0.00	1,000.00
Youth Middle	0.00	0.00	0.00	0.00	0.00
Brass Nickel	0.00	0.00	0.00	0.00	0.00
Bibles, hymnals	0.00	0.00	0.00	0.00	0.00
Nursery	0.00	0.00	0.00	0.00	0.00
Tree	0.00	0.00	0.00	0.00	0.00
Library	0.00	0.00	0.00	0.00	0.00
Air Conditioning Fund	15.00	0.00	0.00	0.00	15.00
GMS Ten-to-One	5.00	0.00	0.00	0.00	5.00
Total Designated	\$2,972.19	\$0.00	\$17,374.62	(\$19,842.65)	\$509.16
Total Designated+NonDesignated	\$3,239.00	\$9.80	\$17,374.62	(\$19,842.65)	\$785.77
TOTAL:	\$3,239.00	\$9.80	\$17,374.62	(\$19,842.65)	\$785.77

Bequests					
Reckhow Endowment Fund	5,563.54	276.47	0.00	0.00	5,840.01
Binder Bequest (Youth)	7,985.10	0.00	0.00	0.00	7,985.10
	0.00				
Bequest sub-total	\$13,548.64	\$276.47	\$0.00	\$0.00	\$13,825.11
<hr/>					
GRAND TOTAL	\$16,787.64	\$286.27	\$17,374.62	(\$19,842.65)	\$14,610.88

INVESTMENT ANALYSIS:

INVESTMENTS	Maturity Date	Interest Rate	Term	Balance 01/01/07	Balance 12/31/07
Bank of Elmwood Savings		0.20%		3,239.00	785.77
Reckhow Endowment Fund	22-Jan-08	3.40%	1 Year	5,840.01	5,840.01
Mission Inv. Fund-Youth (Binder)	12-Jan-08	3.40%	1 Year	7,985.10	7,985.10
<hr/>					
TOTAL INVESTMENTS				\$17,064.11	\$14,610.88

Respectfully submitted,
 —Michele Kreimer



**Emmaus Mortgage Annual Statement
 by Thrivent Financial for Lutherans™**

Loan information:

Loan number: 204571000
 Maturity date: 7/01/2024
 Interest rate: 6.100%

Principal and interest information:

Principal balance at 12/31/2006: \$82,899.57
 Interest paid through 12/31/2007: \$4,417.10
 Principal balance at 12/31/2007: \$74,904.67

Memorials and Honoraria

DESIGNATED MEMORIALS

PRINCIPAL REDUCTION

Hansen, Chris\$120.00

CHOIR MUSIC/FOLDERS

Anderson, David H..... \$30.00
 Hunter, Kerry\$240.00
 Meyer, Chester \$30.00

EVANGELICAL LUTHERAN WORSHIP

Barth, Don..... \$20.00
 Burg, Emma \$20.00
 Bower, Marion..... \$20.00
 Christensen, Milton..... \$20.00
 Clark, Fern..... \$20.00
 Demant, Anna, Marie & Laura .. \$20.00
 Dykstra, Clarence, Lennie &
 Judy..... \$20.00
 Eschmann, Otto & Evelyn \$40.00
 Hansen, Chris\$100.00
 Hansen, Roger \$40.00
 Henke, Mae \$20.00
 Jensen, Esther \$20.00
 Jerstad, Louise \$20.00
 LeClair, Elert..... \$20.00
 McDonald, Walter & Henrietta,
 and Alvie Nelson..... \$20.00
 Nemer, Leo R. \$20.00
 Neubauer, John P..... \$20.00
 Neubauer, Marjorie B. \$20.00
 Ortiz, Bryan..... \$20.00
 Robinson, William & Ruth..... \$20.00

Smith, Arthur P. Jr..... \$20.00
 Sorensen, Anna, Marie & Laura \$20.00
 Sukus, Richard \$20.00
 Svendsen, Janet \$25.00
 Traeger, William & Mayme \$20.00

ELW GIFTS IN KIND

Christensen, Freda & Bill
 Fredericksen, Julia, & Anne Petersen
 Petersen, Rose & Ernest
 Petersen, Sophia & Martin

FIRESIDE ROOM

Hunter, Kerry \$350.00
 LeRoux, Lloyd \$575.00

GIVING TREE

Hunter, Kerry \$200.00

HEIFER PROJECT, directly to
 Neighborhood Camp acct.

Sorensen, Norman \$500.00

LANDSCAPING

Christensen, Margaret \$326.00
 Hansen, Chris \$565.00
 Hunter, Kerry \$239.00
 Meyer, Chester \$3,736.00

LIGHTED SCHOOLHOUSE

Anderson, David H..... \$460.00

NEIGHBORHOOD CAMP

Felton, Rev. Maurice \$25.00
 Hunter, Kerry \$65.00

**NEIGHBORHOOD CAMP, directly to
 Neighborhood Camp acct.**

Aiken, Betty \$450.00
 Beyer, Erv \$50.00
 Christensen, Margaret \$75.00
 Dykstra, Judy \$200.00
 Holding, Russell \$115.00
 Hunter, Kerry \$280.00
 Jensen, Esther \$450.00
 Johnson, Beverly \$50.00
 Neubauer, Dorothea \$795.00
 Petersen, Julius & Russell \$25.00
 Saylor, Ken \$100.00
 Zielke, Lyle \$115.00

PANELING ABOVE ALTAR

Christensen, Bill & Freda \$10,002.17

PASTOR'S DISCRETIONARY FUND

Hunter, Kerry \$500.00
 Munch, Bernice \$50.00

SNOW REMOVAL

Sorensen, Norman \$120.00

WHEELCHAIRS

Christensen, Margaret \$750.00

NON-DESIGNATED MEMORIALS

Christensen, Margaret \$1,720.00
 Felton, Rev. Maurice \$100.00
 Hansen, Chris \$2,340.00
 Hlavka, Ruth \$395.00
 Munch, Bernice \$410.00
 Schultz, Caroline \$100.00
 Sorensen, Norman \$150.00
 Sorensen, Selma \$1,016.00

DESIGNATED HONORARIA

CHOIR MUSIC

Bagley, Mason \$30.00

EVANGELICAL LUTHERAN WORSHIP

Andersen, Donald & Naoma \$20.00
 Bagley, Dorothy \$20.00
 Brown, Nancy \$20.00
 Demant, John \$20.00
 Hunter, Kerry \$20.00
 Jensen, Kyle \$20.00
 Keller, Marion \$20.00
 Lamberton, Ashley \$20.00
 Lamberton, Chris \$20.00
 Lamberton, Nathan \$20.00
 Lamberton, Ryan \$20.00

LANDSCAPING

Albright, Kelsey \$34.00
 Dexter, Cheryl \$81.00
 Unnamed person \$5.00

**NEIGHBORHOOD CAMP, directly to
 Neighborhood Camp acct.**

Crehan, Valerie \$485.00
 Janz, Rev. Mary \$570.00
 Jones, Brennan \$55.00
 Jones, Brennan & Hayden \$115.00
 Johnson, Victor \$35.00
 Larsen, Ken & Eric \$100.00
 Robe, Toby \$200.00
 Smith, Nancy \$585.00
 Steinberg, Crystal \$500.00

NON-DESIGNATED HONORARIA

Brown, Nancy \$20.00
 Sanders, Katie, & Kylie Talbott \$50.00

2007 RECEIVED BEQUESTS

None

Greater Milwaukee Synod - ELCA MISSION SUPPORT STATEMENT

STATEMENT DATE: 12/31/2007

SEND TO: Emmaus Ev. Lutheran #14778
 1925 Summit Ave.
 Racine, WI 53404-2374

Greater Milwaukee Synod - ELCA
 1212 S Layton Blvd
 Milwaukee, WI 53215

DATE	DESCRIPTION	AMOUNT	BALANCE
01/31/2007			Balance forward 0.00
02/01/2007	INV #14778-07. 2007 Commitment per Cong. Rpt.	14,500.00	14,500.00
03/02/2007	PMT #15487. Feb 2007	-300.00	14,200.00
04/09/2007	PMT #15579. Mar 2007	-800.00	13,400.00
04/20/2007	PMT #15618. Feb 2007	-500.00	12,900.00
05/01/2007	PMT #15668. Apr 2007	-800.00	12,100.00
06/12/2007	PMT #15763. May 2007	-800.00	11,300.00
06/12/2007	PMT #15743. Jun 2007	-800.00	10,500.00
06/29/2007	PMT #15814. Jun 2007	-800.00	9,700.00
07/18/2007	PMT #15862. Jul 2007	-800.00	8,900.00
09/13/2007	PMT #16015. Aug 2007	-800.00	8,100.00
09/24/2007	PMT #16051. Sep 2007	-800.00	7,300.00
11/02/2007	PMT #16135. Oct 2007	-800.00	6,500.00
11/14/2007	PMT #16154. Nov 2007	-800.00	5,700.00

REMAINING COMMITMENT:	\$5,700.00
BALANCE REMAINING FOR PRIMARY SUPPORT	\$5,700.00

The donor has not been provided with any goods or services connected with the above contributions.



Actual vs. Budget Summary

Ordinary Income/Expense	Jan.-Dec., 2007	Sub Total	Totals	Budget	Total
Operating Income					
General Offering	171,721.18			184,000.00	
Holiday Offering/Adopt-a-Bill/Special	4,358.00			4,000.00	
Above & Beyond	6,735.00				
Building Use & Rent	3,875.00			5,000.00	
Mortgage Retirement	8,497.17			10,000.00	
Adopt-A-Sunday	600.00			2,000.00	
Total Operating Income		195,786.35			205,000.00
Designated Income	25,908.60			10,000.00	
Total Income		221,694.95			215,000.00
Grant Supported Outreach Income (Payroll)					
Outreach Payroll (From Grant Monies)	35,707.20				
EASY Payroll (From Grant Monies)	38,302.71				
Neighborhood Camp Payroll (From Grant Monies)	41,409.88				
Racine Literacy Payroll	53,001.51				
In/Out Income	13,899.74				
Total Grant Supported Outreach Income		182,321.04			37,000.00
Total Combined Income			404,015.99		215,000.00
Expenses					
Benevolence					
Greater Milwaukee Synod--ELCA (\$5450 for 2006)	11,550.00			14,800.00	
Racine Cluster, HALO, 10-1 Hunger, etc.	4,183.09				
Total Benevolence		15,733.09			14,800.00
Payroll					
MLJ-Salary	39,949.68			42,000.00	
Social Security	3,173.88			3,213.00	
Automobile	2,184.00			2,184.00	
Parsonage	3,000.00			3,000.00	
Total Salary		48,307.56			50,397.00
MLJ- Benefits					
Pension, Disability, ELCA Admiin.	6,899.02			7,043.00	
Major Medical	8,853.84			9,637.00	
Medical Reimbursement	750.00			750.00	
Continuing Education	186.00			1,000.00	
Housing Equity	2,400.00			2,400.00	
Total Benefits		19,088.86			20,830.00
(*Outreach Salaries were Supported with Grant Monies)					
Outreach Pastor* (Pastor Walter)	0.00			6,480.00	
Visitation Pastor	0.00			1,200.00	
		0.00			7,680.00
Support Staff Payroll					
Secretary	24,000.00			24,000.00	

Custodian	3,865.17		7,904.00
Outreach Minister* (Valerie)	1,800.00		22,000.00
Mentor/Education Coordinator* (Nancy)	4,300.00		8,160.00
Organist	8,100.00		8,100.00
Guest Organist	450.00		500.00
Choir Director	5,599.98		5,600.00
Groundskeeper	313.50		2,000.00
Saturday Accompanist	1,635.00		1,560.00
Total Support Staff Payroll		50,063.65	79,824.00
Support Staff Benefits/Payroll Liability			
FICA	7,334.39		5,011.00
Medicare	2,584.66		945.00
Paul IRA	<u>1,000.00</u>		1,250.00
Total Support Staff Benefits/Payroll Liability		10,919.05	7,206.00
Miscell. Payroll	84.17	84.17	
 Ministry			
Worship and Music (Includes New hymnals)	7,992.33		4,000.00
Education	2,009.91		3,000.00
Witness/Member Care	1,601.16		2,000.00
Stewardship	964.34		800.00
Youth	0.00		100.00
Congregational Life/Fellowship	934.68		700.00
Social Concerns	<u>301.92</u>		150.00
Total Ministry		13,804.34	10,750.00
 Administration/Office		21,406.65	16,500.00
 Building & Maintenance			
Utilities	20,569.94		23,000.00
Janitorial Supplies	1,497.83		2,100.00
Maintenance/Repairs/Snow Shoveling	18,922.53		6,000.00
Insurance	5,182.00		5,200.00
Mortgage	<u>13,404.00</u>		11,904.00
Total Building and Maintenance		59,576.30	48,204.00
In/Out Expenses		<u>4,499.14</u>	
Total Expenses		243,482.80	258,087.00
Grant Supported Outreach Payroll*			
EASY Payroll	50,542.71		
Outreach After School	18,040.00		
Neighborhood Camp Payroll	41,409.88		
Racine Literacy Payroll	<u>53,001.51</u>		
Total		162,994.10	406,476.90
Net Income		<u>-2,460.91</u>	<u>-6,087.00</u>

Note: Separate accounting is done for the following:

- Emmaus Outreach Fund
- Racine Family Literacy Program
- Racine Neighborhood Camp

Note: * Budgeted Outreach salaries indicated with an * were supported with Grant Monies.

Each of these programs is able to offer specific information upon request.

Other Emmaus checking accounts include: Youth, WELCA, Sunday School, Scrip, Petty cash, & Pastor's Discretionary

Grant Income

Synod Outreach for Hope	22,000.00	25,000.00
ELCA Division for Outreach	13,750.00	12,000.00
RUSD	<u>16,397.00</u>	<u> </u>
Total Grant Income	52,147.00	37,000.00

Emmaus Evangelical Lutheran Church

Proposed Budget

Jan. - Dec., 2008

Ordinary Income/Expense	Amount	Sub Total	Totals
Operating Income			
General Offering	180,000.00		
Holiday Offering/Adopt-a-Bill/Special	4,500.00		
Above & Beyond	0.00		
Building Use & Rent	4,500.00		
Mortgage Retirement	10,000.00		
Adopt-A-Sunday	1,000.00		
Total Operating Income			<u>200,000.00</u>
Expenses			
Benevolence			
Greater Milwaukee Synod--ELCA (\$5450 for 2006)	10,000.00		
Racine Cluster, HALO, 10-1 Hunger, etc.	250.00		
Total Benevolence		10,250.00	
Payroll			
MLJ-Salary	42,000.00		
Social Security	3,213.00		
Automobile	2,184.00		
Parsonage	3,000.00		
Total Salary		50,397.00	
MLJ- Benefits			
Pension, Disability, ELCA Admin.	7,000.00		
Major Medical	9,600.00		
Medical Reimbursement	750.00		
Continuing Education	1,000.00		
Housing Equity	2,400.00		
Total Benefits		20,750.00	
(*Outreach Salaries supported with Grant Monies)			
Outreach Pastor* (Pastor Walter)	0.00		
Visitation Pastor	0.00		
		0.00	
Support Staff Payroll			
Secretary	24,000.00		
Custodian	7,500.00		
Outreach Minister* (Valerie)	0.00		
Mentor/Education Coordinator* (Nancy)	0.00		
Organist	8,100.00		
Choir Director	5,600.00		
Groundskeeper	500.00		
Saturday Accompanist	2,500.00		
Total Support Staff Payroll		48,200.00	
Support Staff Benefits/Payroll Liability			
FICA	3,687.00		
Medicare	771.00		
Paul IRA	1,250.00		
Total Support Staff Benefits/Payroll Liability		5,708.00	

Ministry

Worship and Music	4,000.00	
Education	1,000.00	
Witness/Member Care	1,500.00	
Stewardship	1,000.00	
Youth	0.00	
Congregational Life/Fellowship	500.00	
Social Concerns	150.00	
Total Ministry		8,150.00

Administration/Office

20,000.00

Building & Maintenance

Utilities	21,000.00	
Janitorial Supplies	1,500.00	
Maintenance/Repairs/Snow Shoveling	8,500.00	
Insurance	5,200.00	
Mortgage	11,904.00	
Total Building and Maintenance		48,104.00

Total Expenses**211,559.00****Estimated Grant Income**

LACE	2,500.00	
Synod Outreach for Hope	25,600.00	
ELCA Division for Outreach	12,000.00	
RUSD	16,000.00	
Total Estimated Grant Income		56,100.00