

Emmaus Messenger

From *EMMAUS LUTHERAN CHURCH*

Volume III

Racine, Wisconsin, February, 1949

Number 2

PASTOR LEAVES FOR WEST COAST

On Sunday morning, February 13, Pastor Magnussen preached his farewell sermon on the text, "Be Ye Kind To One Another," (Ephesians 4:32). Among the statements made were: "do good without thought of reward; do not be satisfied with feeling good or kind, but do

child, but the Irish lady did something for her. Let our kindness be more than an emotion; let it go out in Christian service. May God bless us through the love shown in Christ, that we may be moved to consecrated service as well as enjoying the emotion of kindness.

At another occasion in the service the pastor heartily thanked all in the congregation for what they had meant to him and his family, in things spiritual as well as material; in encouragement and hearty support as well as private prayers and unseen deeds done in Jesus' name.

From a Letter En Route

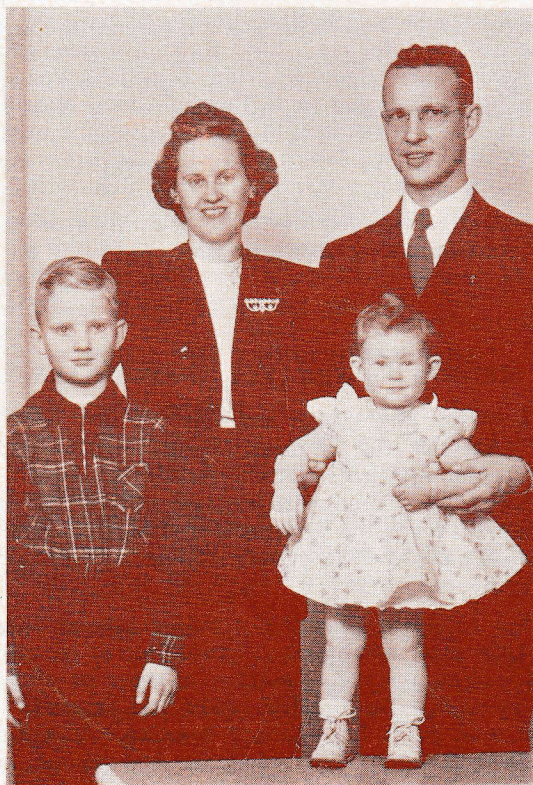
Our pastor writes from Harlan, Iowa, which they reached by Thursday evening: "We left Racine about 10:30 a.m. on Wednesday morning in bright sunshine but with many feelings of sadness at leaving Racine and Emmaus people. We found Racine county roads were quite good; but most of Walworth county was very icy, with occasional clear stretches. Driving grew increasingly more difficult at speeds of 20 miles per hour or less and on one occasion near Monroe we had to retrace our steps to make a hill because of difficulties another motorist had in making a glassy hill. We reached East Dubuque and found lodging in a tourist camp by five o'clock, having covered about 175 miles.

"We dreaded the next day's drive and the steep ascent on the other side of Dubuque, but found it quite clear and well sanded. The ice continued however until Cedar Rapids, Iowa; there we stopped for lunch. (Perhaps it was the huge Quaker Oats granaries that suggested it.) From here on the roads were excellent and we made exceedingly good time. We stopped at Audubon to see my mother, and found several of the family gathered there awaiting a cup of coffee with us. They were soon caught up on events from the trip and we journeyed on to Harlan where we were to stay with my sister, Mrs. Gene Haskins. A family reunion was planned for Sunday, therefore we decided to go on to Blair on Friday, and come back to Audubon on Sunday. I was later invited to speak at Audubon, since the pastor had a heavy cold.

Greetings from Dana

"Friday turned out to be another grand day and water was coursing down the sides of the pavement from the thaw. We arrived in Blair about one o'clock and found my brother Philip in Omaha. We decided to call at Dana first and visit with him and his family later that evening. We spent some time at my sister's, Mrs. Joe Andersen, and had a fine supper there in their studio apartment on Blair's hillsides.

(Continued on page 3, column 2)



*Pastor and Mrs. Magnussen
Stephen, Juliane, 1949*

something with it, lest the feeling end as a wasted emotion; by our grumpiness and injustice and selfishness we can make things very difficult for our friends, but by our kindness and helpfulness we can make them delightfully smooth and easy. And the difference in wear and tear is enormous." A story was told of an author who wrote touchingly of a little lost child; it brought tears to the eyes of the readers. But an observer who noted the source of the author's description, saw that he forgot to tell one thing in the story. A motherly person with a fine Irish accent came bustling through the crowd surrounding the confused child and said: "What are yez all jawing about? Can't ye see it's a hug the poor darling wants." Others only felt sorry for the

Emmaus Messenger

Published Monthly by the



EMMAUS LUTHERAN CHURCH

1134 Mound Avenue Racine, Wisconsin

O. V. MAGNUSSEN, Pastor

Phone: Jackson 1110 1130 Mound Avenue

Publication Committee: Henry Lund, Ernest Petersen, George Hansen

Lutheran Publishing House

SUNDAY SERVICES

Sunday School and Bible Classes.....9:00 a.m.
Morning Worship.....10:10 a.m.

OTHER MEETINGS

Danish Ladies' Aid.....Second Wednesday 2:00 p.m.
English Ladies' Aid.....Third Wednesday 2:00 p.m.
Church Council.....First Tuesday 7:45 p.m.
Luther League.....Each Sunday 6:30 p.m.
Church Choir.....Each Thursday 8:00 p.m.
Missionary Society.....Second Tuesday 8:00 p.m.
Brotherhood.....Last Tuesday 8:00 p.m.
Fellowship Group.....Second Wednesday 8:00 p.m.
Teacher's Meeting.....Third Tuesday 8:00 p.m.
Bible Class Teachers.....Third Monday 8:00 p.m.
Benevolent Society.....Second Monday 8:00 p.m.
Cradle Roll Workers.....Quarterly 8:00 p.m.
Confirmation Classes.....Saturday 9:30 a.m.

FAREWELL PARTY

At 4 p.m. Sunday, February 13th, members of the congregation and fellow pastors gathered to bid farewell to Rev. and Mrs. O. V. Magnussen and family before they left for their new charge in Easton, California. The program was held in the church where Rev. K. J. Wilhelmsen gave the main address. Rev. Cornelius Hansen opened the meeting with a scripture reading and prayer. During the service two of Rev. Magnussen's favorite anthems were sung by the choir.

Supper was served at festively decorated tables to over 300 in the church parlors following this program. To facilitate the handling of such a group, some stayed up in the church visiting and listening to selections by organist, Gordon Petersen.

After supper an informal program was held in the basement at which time Rev. and Mrs. Magnussen were presented with two pieces of luggage and a purse. They were so overwhelmed by the gifts it was hard for them to express their thanks. Rev. E. R. Andersen, Harry Andersen, Henry Andersen, and Ernest Petersen expressed their appreciation to Rev. and Mrs. Magnussen for their fine work among us. Completing the program were solos by Harry James, and Ethel Christensen, and a duet sung by Roma Martin and Jean Simonsen.

Omar Junker headed the large committee of volunteers who handled this day so well.

MISSION CELEBRATES ANNIVERSARY

On January 18, 1924, in the home of Rev. and Mrs. E. R. Andersen, the Emmaus Mission Society had its small beginning with nineteen charter members. The majority of the women were business women who could not attend any of the afternoon meetings of other societies. This year the society celebrated its twenty-fifth anniversary.

At the November meeting it was suggested and decided that each member take one dollar of her money and use it as a nucleus, making it grow in whatever way she could. The original dollar and proceeds were then turned in at the January meeting. The results were good. Some of the women baked, sewed, made Christmas tree ornaments, served coffee and refreshments at set dates, or worked on other projects. Up to date \$196.57 has been brought in. Each member was privileged to designate where she wished her money to be used. If there are others who have not turned in their project money it is not too late, as the money will not be sent in until after the March 8th meeting.

This past year we have had several other projects such as sending food boxes to H. Inadomi; paper, pencils and bandages to Africa; and making up teen-age bundles for displaced boys and girls—two for boys and two for girls.

We, of the Emmaus Mission Society, wish to extend a hearty invitation to any lady who wishes to join us in the Lord's work.

For our March 8th meeting we will be privileged to have Rev. Karl J. Wilhelmsen as our speaker. He has a wonderful message on "Evangelization." All women interested are invited.

EMMAUS NOTES



The last Sunday School Teachers' Institute was held Monday, February 21st, at 7:45 p.m. in Emmanuel Lutheran Church on High Street. Rev. C. C. Kloth from Clinton, Wis., spoke on "The Teacher's Reward."

The Lutheran men of Racine met at Gethsemane Lutheran Church on Washington's Birthday and heard Dr. Julius Bodensieck, Professor of the New Testament at Wartburg Theological Seminary, Dubuque, Iowa. Dr. Bodensieck spoke on "God Blesses a Repentant Church" which was a topic growing out of a two-and-a-half-year visit in Germany immediately after the war.

At the congregational meeting February 14th, the decision was made to call Rev. Sigurd Petersen, Royal, Iowa. The meeting was unusually well attended with over a hundred in attendance. The last call was extended to Rev. Edwin Hansen who returned it a short time ago.

Our former pastor's new address is: Rev. O. V. Magnussen, Route 12, Box 342, Fresno, Calif.

We welcome into our midst Mrs. George Jacobsen, 1606 West Street, who was a member of St. Jacobi Lutheran Church in Milwaukee.

Rev. Magnussen and a few others attended the ordination of William Hanson at Atonement Lutheran Church in Chicago. He visited in Racine before journeying to his call at Graettinger, Iowa. Emmaus friends will also remember that Dr. Harold Sorensen and family are now practicing in that city.

FROM THE CHURCH RECORDS

At the Font

John Charles Burdick, son of Milton and Francis Burdick, born December 1, 1948, was baptized January 23, 1949, at Emmaus Lutheran. Sponsors: Mr. and Mrs. Harold Hoffman.

David Frederick Beck, son of Emil and Grace Beck, born October 15, 1948, was baptized February 6, 1949. Sponsors: Allen and Alice Hillman.

At the Grave

Mrs. Rasmus Jensen, born in Fredericia, Denmark, on February 12, 1868, passed away at the age of 80 on January 24, 1949, and was buried on January 27th.

G. H. Currier, age 51, died on January 28, 1949, and was buried February 1st.

Mrs. C. W. Mortensen died January 30, 1949, and was buried February 3rd.

OUR MINISTRY OF MERCY

Jean Larsen has been moved to Sunnyrest; Mr. Poulsen is improving; Mrs. Stanley Burdick who fell and cracked her upper arm is now at home; Fred Christensen is better and has been attending church; Mrs. Andres is also better and she too has been attending church; Mrs. Esther Gething, Sunnyrest, has been very ill; Marjorie Hansen underwent an appendectomy at St. Luke's; Mrs. C. Larson is better; Mrs. Chris Christensen is not very well yet; Mrs. J. Busch, a member of the Danish Aid is being treated at an out-of-town hospital.

Congratulations to Mr. and Mrs. Russel Kwapil, Mr. and Mrs. Melvin Gustavsen, and Mr. and Mrs. Harold Kasproovich on their new arrivals.

(Continued from page 1)

The new Administration-Library Building was beautiful on a background of snow. Leroy Andersen and Joe Andersen took me through. Within it was even more delightful and practical and beautiful than I had thought. Beautiful leather covered the doors to the library; blonde oak was the wood trim; reported to be the best lighted college building in the state; an atmosphere of culture and refinement pervaded together with a spirit of pride and thankfulness to the synod that provided the much needed building. And yet how much more could we not do if we were all inspired with what they are accomplishing in the hearts of the young people to whom they minister! A glimpse in the offices of the president and dean of the seminary made me feel that at last we were providing quarters where visitors could be met without apology. A chat followed in Rev. Nyholm's office; he is apparently doing a big job for the school and seminary. We ran into Rev. Edwin Svendsen who had brought up some boys from Oaks to look over the college. Everywhere there was a spirit of excitement. Two busses were taking the students with the college band to Concordia for a basketball game. Dana had suffered her first defeat last week by Tarkio. They were really out to make a come-back. Before they left, however, there was an a cappella choir rehearsal of which I heard about three or four numbers. They were well done; Paul Neve was busy putting on the final touches for the tour to the west coast which will begin in a couple of weeks. I recognized many young people from Lake Okoboji Bible camp.

"Among those I visited were Mr. and Mrs. Leroy Andersen, George Demant, Frank and Helen Hengeveld, Dr. and Mrs. J. P. Nielsen, and one ran into acquaintances from Racine and elsewhere constantly. When I finally looked at the time I was overdue at my sister's for supper, and still I hadn't seen Harley or Maynard. Then, I found my car frozen fast to the gravel after the thaw from a sudden drop of 18 degrees in temperature within half an hour, and I was unable to move until Leroy came to my assistance. I arrived a little late for supper, but had a nice visit with both my brother and sister and their families. Philip, the manager of the Publishing House, took us over to show us the new used press they had bought. They had moved all the presses into the new addition, where through added convenience two men could work four presses, instead of the two they previously ran. A carload of paper had just come and we saw the hydraulic lift which handled the huge bales of paper. It seemed to me to be a fine set-up, and the spirit of progress, efficiency and joy in the work was evident. We got home to Harlan at one o'clock and there my story ends for now.

(To be continued)

PROSPECT 6652

SHOP and SAVE

Food Market

1502 STATE ST.

PROSPECT 6652

Sec. 562 P. L. & R.
U. S. POSTAGE
PAID
Blair, Nebraska
Permit No. 18

OUR ADVERTISERS MAKE THIS PAPER POSSIBLE

State Street Hardware Co.

Tools - Builder's Hardware
Household Appliances
Paint - Wallpaper - Floor Covering
1002-04 State St. Prospect 738

Dine at
HOTEL RACINE

Overlooking Lake Michigan
Moderate Priced Dining Room

Christiansen's Chapel, INC.

FUNERAL DIRECTORS
Serving Racine over Fifty-Five Years

ROY E. POULSEN

REAL ESTATE — MORTGAGE LOANS
All Forms of Insurance

1420 Washington Ave. Pros. 7481

Houman's Fish Market

Fresh—Smoked—Salted Fish

1028 State St. Jackson 2107

MERCHANTS DELIVERY

Moving and Storage Company
Insured Movers - - Bonded Warehouses
1215 State St. Prospect 70

Creator of Styles in Fine Jewelry

CARL JACOBSEN

Jeweler 422 Main St.
Jackson 4088

Farmers' & Merchants' Bank

CHECKING AND SAVINGS ACCOUNTS

Service Consistent with Good Banking
Member of the Federal Deposit Ins. Corp.
1012 State Street

Thompson Gasoline Alleys, Inc.

"BETTER GAS FOR LESS"

Goodyear Tires - - Quality Fuel Oils
6th & Marquette - - 16th & Murray
Douglas & Yout - - - - 16th & Racine

Asdahl & Nelson, Inc.

BUILDING MATERIALS — PAINTS
1231 State Street Jackson 561

SEE

Martin Christensen Company

If you need a Home, a Loan or Insurance
1412 Owen Ave. Jackson 6670

HANSEN HEARING AID SERVICE

A. W. HANSEN
Arcade Building - Room 219
423 Main Street - Jackson 4953
The Microtone Company

Engildsen Bakery

Kringles and Danish Pastry
"Our Products Are Favorites"
1506 State St. Jackson 4475

Racine Junction Building and Loan Association

Martin Christensen, Secretary
1603 Washington Avenue Jackson 490
SAVINGS insured to \$5,000. PROFITABLE
HOME LOANS to BUY—BUILD—REFINANCE
Dividends paid or credited semi-annually.

Dorothy Beck Ott Ralph Ott

SAY IT WITH FLOWERS

FROM

OTT FLOWER SHOP

620 State St. Jackson 3366

Ericksen Drug Store

Myron Ericksen, R.Ph.
1100 State St. Prospect 1223



"Built on the Rock
the Church doth stand
Even when steeples
are falling;
Crumbled have spires
in every land,
Bells still are chiming
and calling
Calling the young and
old to rest,
But above all the
soul distrest,
Longing for rest
everlasting."

—Grundtvig.

1851 EMMAUS LUTHERAN CHURCH 1949

Annual Report 1948

Emmaus Messenger

From EMMAUS LUTHERAN CHURCH

Volume III

Racine, Wisconsin, March, 1949

Number 3

Emmaus Messenger

Published Monthly by the



EMMAUS LUTHERAN CHURCH

1134 Mound Avenue Racine, Wisconsin

FRANK BERG, Interim Pastor

Phone: Jackson 1110 1130 Mound Avenue

Publication Committee: Henry Lund, Ernest Petersen, George Hansen

Lutheran Publishing House

SUNDAY SERVICES

Sunday School and Bible Classes.....9:00 a.m.
Morning Worship.....10:10 a.m.

OTHER MEETINGS

Danish Ladies' Aid.....Second Wednesday 2:00 p.m.
English Ladies' Aid.....Third Wednesday 2:00 p.m.
Church Council.....First Tuesday 7:45 p.m.
Luther League.....Each Sunday 6:30 p.m.
Church Choir.....Each Thursday 8:00 p.m.
Missionary Society.....Second Tuesday 8:00 p.m.
Brotherhood.....Last Tuesday 8:00 p.m.
Fellowship Group.....Second Wednesday 8:00 p.m.
Teacher's Meeting.....Third Tuesday 8:00 p.m.
Bible Class Teachers.....Third Monday 8:00 p.m.
Benevolent Society.....Second Monday 8:00 p.m.
Cradle Roll Workers.....Quarterly 8:00 p.m.
Confirmation Classes.....Saturday 9:30 a.m.

"AND PETER"

Easter joy is meant for sinners. The angel's voice which echoes in the empty tomb was directed to a special sinner: "Go, tell the disciples and Peter." Peter was as bad a sinner as you; he followed Jesus afar off, kept wordly company, lied, cursed, three times publicly denied his Master, and deserted Him in His hour of need. Peter was sorry for his sin, but so "down in the dumps" over his failure that likely he no longer counted himself a disciple. Can't you imagine what wild joy the Lord's message brought to Peter? "Jesus lives!" Peter exulted. "And He wants a sinner like me!"

The 1949 message of victory over sin and death is directed to a special sinner—you. May there not be modern "Peters" reading this? Have you been following Jesus afar off, keeping company with those who love Him not, denying the One who died for you by your way of life, and deserting Jesus rather than confessing to friends that you love and follow Him?

Perhaps in Petrine honesty you no longer count yourself a Christian. You have wondered if there is forgiveness and real peace with God for such as you. "Jesus lives!" He wants sinners like you! Easter is for you.

The empty tomb is God's seal on the cross. The penalty of your sin has been paid by the precious blood poured forth on Calvary. You are free! God has accepted Jesus' ransom payment in your behalf.

It is unthinkable that any would deny himself this pardon. Will you not get down on your knees and thank Jesus for dying in your stead, and confessing your sin, praise Him in true Easter joy that his guilt has all been taken away? Jesus wants you! Jesus waits for you!

Jesus lives to keep you. Put your hand into His afresh every morning of life, fellowship with the Risen Christ of Easter in His Word, let your heart be lifted up to Him in praise and prayer. This true joy of Easter will not dampen when the rain wets your new hat, but the Living Lord will be with you in the stormiest hours of life.

Easter joy is meant for sinners; it is meant for you!

Rev. Frank Berg.

A SERMON FROM SHOES

There lived forty years ago, in Berlin, a shoemaker who had a habit of speaking harshly of all his neighbors who did not think quite as he did about religion. The old pastor of the parish in which the shoemaker lived heard of this and felt that he must give him a lesson.

He did it in this way. He sent for the shoemaker one morning, and when he came in, said to him: "Master, take my measure for a pair of boots."

"With pleasure, your reverence," answered the shoemaker, "please take off your boot."

The clergyman did so, and the shoemaker measured his foot from toe to heel, and over the instep, noted all down in his pocket-book, and then prepared to leave the room.

But as he was putting up the measure, the pastor said to him: "Master, my son also requires a pair of boots."

"I will make them with pleasure, your reverence. Can I take the young man's measure?"

"It is not necessary," said the pastor; "the lad is fourteen, but you can make my boots and his from the same last."

"Your reverence, that will never do," said the shoemaker, with a smile of surprise.

"I tell you, sir, to make my son's on the same last."

"No, your reverence; I cannot do it."

"It must be—on the same last."

(Continued on page 10)

Treasurer's Report for 1948

RECEIPTS

Bank balance January 1, 1948 \$ 2,128.63
 (Current \$1437.46; Benevolent \$691.17)

Receipts for Current Expenses

Received from Members' Envelopes \$ 6,781.51
 Received from Collections 345.05
 Received from Initial Envelopes 85.25
 Received for "Ads" in Emmaus Messenger 297.50
 Received for Sunday School Aid 72.01
 Received for Daily Vacation Bible School 55.43

Total Receipts for Current Expenses \$ 7,636.75

Receipts for Benevolence, Missions, Washington Island, etc.

Receipts from Members' Envelopes \$ 3,110.56
 Offerings to Washington Island Church 194.99
 Offerings for Wis. Luth. Welfare \$40.00; Wis. Dist. Mission \$146.10 186.10
 Church Extension Fund \$1694.31; Dana Building Fund \$1772.09 3,466.40
 Offering for Wis. Luth. Students Foundation 150.55

Total Receipts for Benevolent Expenses \$ 7,108.60

Total Receipts, Current and Benevolent 14,745.35

TOTAL RECEIPTS with Balance on hand \$16,873.98

Current Disbursements

DISBURSEMENTS

Pastor's Salary \$ 3,000.00
 Janitor's Salary and Supplies 318.48
 Choir Director, Organists, and Music 554.16
 Fuel \$519.37; Water, Telephone, Gas and Light \$384.26 903.63
 Office Supplies and Postage 522.35
 Insurance \$136.30; Taxes \$46.58; Maintenance of Properties \$203.08 385.96
 Vacation School \$123.93; Sunday School \$143.51; Picnic Expenses \$10.57 278.01
 Wine and Wafers \$6.86; Candles \$51.22; Flowers \$1.00 59.08
 Synodical Papers to Members \$375.73; Printing of Messenger \$422.09 797.82
 Bible Camp Expenses \$35.00; L. L. Workshop \$26.00; Delegates \$260.21 321.21
 Service Announcements in local paper 41.90
 Student Pastor \$495.00; Choir Robes \$255.00 750.00
 Transferred to Building Fund 500.00

Total Current Expenses \$ 8,432.60

For Benevolence, Missions, Washington Island

Dana College \$743.73; Home Missions \$590.00 \$ 1,333.73
 Indian Mission \$155.00; Children's Homes \$300.00 455.00
 Pension Fund \$455.00; Utah Mission \$60.00 515.00
 General Fund \$535.00; Wisconsin District \$110.10 645.10
 Hospital Chaplain \$110.00; Wis. Luth. Welfare \$143.00 253.00
 Washington Island \$194.99; Dist. Meeting Expenses \$36.00 230.99
 Eben-Ezer \$100.00; Wis. Luth. Students Foundation \$150.55 250.55
 Church Extension Fund \$2344.31; Dana Building Fund \$1772.09 4,116.40

Total Benevolent Disbursements \$ 7,799.77

Total Disbursements, Current and Benevolent 16,232.37

Cash Balance, Current \$ 641.61

Improvement Fund

Bank balance, January 1, 1948 \$ 95.47
 Received from Members 662.55

Total Receipts \$ 758.02

Total Disbursements 98.00

Bank balance, January 1, 1949 660.02

Lutheran World Action Fund

Bank balance January 1, 1948 \$ 234.83
 Received from Members 1,105.75

Total Receipts \$ 1,340.58

Total Disbursements 1,290.58

Bank balance January 1, 1949 50.00

BUILDING FUND

Savings Account January 1, 1948 \$ 88.75
 Deposited 500.00

Savings Account January 1, 1949 588.75

TOTAL BALANCE (All Sources) \$ 1,940.38

TOTAL RECEIPTS: \$19,561.33; TOTAL DISBURSEMENTS: \$17,620.95; BALANCE \$ 1,940.38

Chris C. Christensen, Treasurer.

Membership Record and 1948 Contributions Through Envelopes

A			
Abrahamsen, Mrs. George***, 3518-17th St.	\$ 32.00	Christensen, Mr. and Mrs. C., 2037 Deane Blvd.	145.00
Allen, Mr. and Mrs. Wm., Route 3, Box 177	29.00	Christensen, Mr. David, 426 West Blvd.	145.00
Andersen, Dorothy, 5030-22nd Ave., Kenosha, Wis.		Christensen, Mrs. Ethel, 2042 Kinzie Ave.	25.00
Andersen, James, 5030-22nd Ave., Kenosha, Wis.		Christensen, Mr. and Mrs. Fred, 1235 Grove Ave.	185.00
Andersen, Mrs. Aage, 704 Randolph St.	19.50	Ruth, 1235 Grove Ave.	21.10
Elise, 704 Randolph St.	12.00	Christensen, Mr. and Mrs. J. W., 2426 E. 20th St.	51.00
Kai, 704 Randolph St.	9.00	Christensen, Mr. and Mrs. Martin, 2410 Kinzie Ave.	200.00
Andersen, Rev. E. R., 614 Ninth St.	95.00	Christensen, Mr. and Mrs. Soren, Route 2, Box 173	60.50
Andersen, Mr. Harold, (student), Dana College, Blair, Nebr.		Kenneth, Route 2, Box 173	7.00
Andersen, Mr. Maynard, (student), Dana College, Blair, Nebr.		Milton (Service), Route 2, Box 173	1.00
Andersen, Mr. and Mrs. Elmo, 2317 Hansen Ave.	65.00	Raymond, Route 2, Box 173	8.00
Andersen, Mr. and Mrs. Fred, 1918 Harriet St.	38.25	Christensen, Mr. and Mrs. Wm., R., 913 State St.	10.00
Shirley, 1918 Harriet St.	5.35	Christiansen, Mr. and Mrs. H., 1312 Frederick St.	26.00
Andersen, Mr. Harry F., 1625 Blaine Ave.	69.00	Christiansen, Mr. and Mrs. Otto, 2207 Spring St.	76.00
Andersen, Mr. and Mrs. Henry, 3606 Haven Ave.	150.00	Christophersen, Mrs. A., 1511 May St.	
Andersen, Mr. and Mrs. John, 2322 Hansen Ave.	24.00	Christophersen, Mr. Geo., 252 Wickham Blvd.	
Andersen, Mr. and Mrs. LeRoy, Dana College, Blair, Nebr.	59.00	Christophersen, Mr. and Mrs. John, 524 Hayes Ave.	10.00
Andersen, Mr. and Mrs. LeRoy, 1645 Thurston Ave.	21.00	Christophersen, Miss Patricia, 1632 Prospect St.	
Anderson, Mr. and Mrs. Raymond, 1727 West Wright St., Milwaukee		Christophersen, Mr. Richard, 1632 Prospect St.	
Anderson, Mr. and Mrs. Robert, 1210 Chatham St.	28.00	Clark, Mr. and Mrs. Gardner, 907 Villa St.	62.00
Anderson, Mr. and Mrs. Reuben, 246 Harrison St.	29.00	Charles, 907 Villa St.	6.65
Ruth, 246 Harrison St.		Clark, Mr. and Mrs. Herbert, New Woodstock, Madison Co., N. Y.	
Norman, 246 Harrison St.	1.00	Clausen, Mr. Allen, 1304 Milwaukee Ave.	
Andersen, Mr. Stefan, Route 1, Box 174, Franksville, Wis.		Clausen, Miss Carol*, 1309½ Summit Ave.	1.60
Anderson, Mr. and Mrs. Victor, 2523 Drexel Ave.	76.00	Clausen, Mr. Roland, 1400 N. Wisconsin	
Janet, 2523 Drexel Ave.	7.40	Clausen, Mrs. Vernon, 1516 Isabelle Ave.	5.00
Paul (student), 2523 Drexel Ave.	5.85	Colt, Mrs. Edell, 3223 N. Main St.	20.00
Andersen, Mr. Viggo, 1909 Vale St.	2.00	Cook, Mr. and Mrs. John, 709 Chicago St.	60.00
Anderson, Mr. Thorwald, 2314 DeKoven Ave.	45.00	Cook, Mrs. Wm., 328 Lewers Rd., Apt. C., Honolulu, Hawaii	
Andres, Mr. and Mrs. W. J., 320 Chicago St.	17.00	Cowan, Mr. and Mrs. Lawrence, 1213 Isabelle Ave.	2.00
Atkinson, Mr. and Mrs. Wm., 1230 Forest St.	65.00	Currier, Mrs. G. H., 526 Locust, Evanston, Ill.	
B		D	
Bailey, Mr. and Mrs.** Floyd, Route 3, Kenosha, Wis.	22.00	Dalgard, Mr. and Mrs. C., 3218 Victory Ave.	40.50
Bailey, Mr. Glen, Route 3, Kenosha, Wis.	30.00	Lee, 3218 Victory Ave.	7.30
Beair, Mr. and Mrs. Charles, 222 Howland Ave.	14.15	Davidson, Mrs. Anna, 2036 Mead St.	3.45
Beck, Mrs. Geo., Mt. Rd., Sanborn, N. Y.		Davidson, Mr. and Mrs. Olaf, 2302 High St.	82.00
Beck, Mr. and Mrs. Alfred**, 1642 Murray Ave.	10.15	Demant, Mr. and Mrs. Lewis, Route 1, Sturtevant, Wis.	33.00
Beck, Mr. and Mrs. Evan**, Box 182, Sturtevant, Wis.	1.00	George (student), Route 1, Sturtevant, Wis.	6.50
Beck, Miss Gloria**, Box 261, Sturtevant, Wis.		John Lewis, Route 1, Sturtevant, Wis.	14.0
Bergman, Mrs. Louis, 4026 Spring St.	1.60	Roy F., Route 1, Sturtevant, Wis.	30.00
Louise, 4026 Spring St.	2.00	Droeyen, Mrs. Wm., 1936-12th St.	
Bidlo, Mr. and Mrs. Leo, 1214 Goold St.	4.00	Dugas, Mr. Calvin (student), Badger Village, Madison, Wis.	
Black, Mrs. Donald H., 2246 Kinzie Ave.		Dykstra, Mr. Roy, 1712 Hamilton St.	35.25
Bohn, Mrs. Jos., 1001 Gideon Ct.	5.00	E	
Briggs, Mr. Leonard, 1602 Phillips Ave.	5.00	Eaton, Mrs. Sheldon**, Box 72, Sturtevant, Wis.	1.00
Brown, Mrs. Kristine, 2336 Kinzie Ave.	14.75	Eichstead, Mrs. Ray, 1735 Deane Blvd.	25.45
Brown, Mr. and Mrs. Olaf, 2426 Carmel Ave.	20.00	Arlene, 1735 Deane Blvd.	2.90
Brown, Mr. and Mrs. Peter, 2250 Kinzie Ave.	90.00	Erlanson, Mr.** and Mrs.** Emil, 907 Jackson St.	6.00
Buckman, Mrs. E., 1955 Lawn St.	11.00	Eisenman, Mrs. Martin, Jr., Route 1, Box 373E, Sturtevant Wis. (transferred)	
Burdick, Mr. and Mrs. Edson, 1518 May St.	2.00	Estep, Mrs. Lawrence, Route 4, Pulaski, Tenn.	
Burdick, Mr. and Mrs. Hugh, 1647½ Douglas Ave.		F	
Mary, 1647½ Douglas Ave.		Farina, Mr.** and Mrs. Rocco, 1006 Villa St.	46.00
Burdick, Mr. and Mrs. Milton, 616 Grove Ave.	19.80	Fehlberg, Mr. Jerome, 1333 N. Wisconsin St.	
Burdick, Mr. and Mrs. S. C., 616 Grove Ave.	60.50	Fought, Mr. Kenneth, Ole Davidsen Rd., Racine, Wis.	
Burg, Mrs. William, 1310 Hamilton St.	18.15	Fought, Mr. Richard, 1424 West St., transferred	
Loretta, 1310 Hamilton St.	20.25	Francis, Mrs. Engeline, 1300 Summit Ave.	11.00
Bushman, Mrs. Peter, 1760 Hill St.		Frederiksen, Mr. and Mrs. Carl, 1003 Prospect St.	34.00
Butrum, Mr. and Mrs. Wayne, 2817 Eisenhower Drive	8.00	Delores, 1003 Prospect St.	
C		Frederiksen, Mrs. Earl, 1214 Cleveland Ave.	41.00
Caspers, Mrs. F. J., 1701 Deane Blvd.	40.00	Frederiksen, Miss Julia, 2410 Kinzie Ave.	60.00
Cespkes, Mr. and Mrs. John, 2039 Clark St.	32.00	Frederiksen, Mr. Nels, Waterford, Wis.	

This list contains only those contributions made by envelope.

* Denotes 1948 confirmation class.

** Denotes members received during 1948.

*** Denotes members deceased during 1948.

G

Gardinier, Mr. and Mrs. James, Route 1, Box 265, Sturtevant, Wis.	34.50
Gemmel, Miss Anne, 1141 Michigan Blvd.	
Doris, 1141 Michigan Blvd.	
William*, 1141 Michigan Blvd.	
George, Edith, 1223 Lathrop Ave.	7.31
Flora, 1223 Lathrop Ave.	6.25
Floyd, 1223 Lathrop Ave.	
Mary Ann, 1223 Lathrop Ave.	10.95
George, Mr. and Mrs. Russel J., 619 Wolff St.	20.00
Gluck, Mrs. Zelmira, 2048 Franklin St.	
Grabber, Mrs. Ernest, 1616 Milwaukee Ave.	16.75
Alice, 1616 Milwaukee Ave.	.60
Donald, 1616 Milwaukee Ave.	.20
Eleanor, 1616 Milwaukee Ave.	1.80
George, 1616 Milwaukee Ave.	.25
Janet, 1616 Milwaukee Ave.	6.60
Graves, Mrs. James, 1628 Lakewood Ave.	3.00
Gregory, Miss Arlene(trans.), 1644 Hamilton Ave.	3.85
Franklin, 1644 Hamilton Ave.	4.40
Helen, 1644 Hamilton Ave.	16.45
Milton, 1644 Hamilton Ave.	1.00
Guinn, Mr. and Mrs. James, 1312 Grove Ave.	
Gustavson, Mrs. Ida, 2811 Douglas Ave.	
Gustavson, Mr. and Mrs. Melvin, 1516 Isabelle Ave.	
Gustavson, Mr. Robert, 2811 Douglas Ave.	

H

Hansen, Mr. and Mrs. Albert, 900 Romaine Ave.	50.00
Hansen, Mr. Anton, 1014 Milwaukee Ave.	5.00
Hansen, Mr. and Mrs. Christian, Route 2, Box 480, Racine, Wis.	18.00
Hansen, Miss Ella M., 1728 College Ave.	4.00
Hansen, Mr. Earl, 348 Hamilton Ave., Brooklyn, N. Y.	
Hansen, Mrs. Earl, 633-4th Ave. W., Seattle, Wash.	
Hansen, Mr. and Mrs. Ervin, 1527 Hayes Ave.	50.00
Hansen, Mr. and Mrs. George F., 1648 Boyd Ave.	55.00
Elaine, 1648 Boyd Ave.	62.00
George, 1648 Boyd Ave.	15.00
Hansen, Mr. and Mrs. H. M., 1624 Liberty St.	73.00
Hansen, Mr. Niels, 2167 Clarence Ave.	5.00
Hansen, Mr. James, 911½ Ninth St.	
Hansen, Mr. and Mrs. Jerome, 843 Washington Ave.	7.60
Hansen, Mr. and Mrs. John, Route 1, Box 265, Sturtevant, Wis.	158.00
Lindy, Route 1, Box 265, Sturtevant, Wis.	
Hansen, Miss Lillian, 1003 College Ave.	
Hansen, Mr. Nels, 1640 Carlisle Ave.	12.00
Hansen, Mrs. Nels, 1014 Milwaukee Ave.	17.00
Hansen, Mr. and Mrs. Norman, 2040 N. Erie St.	
Alan R., 2040 N. Erie St.	7.00
Hansen, Mrs. P. C., 408 La Fayette Ave.	45.00
Delbert M., 408 LaFayette Ave.	50.00
Hansen, Mrs. Peter H., 1940 Deane Blvd.	
Hansen, Mr. Robert (Service), 2725 Washington Ave.	
Hansen, Mr. and Mrs. Soren A., 1014 Milwaukee Ave.	15.00
Hansen, Mr. and Mrs. Thorwald, 911 Ninth St.	30.75
James (Service), 911½ Ninth St.	
Hartman, Mrs. R. G., 217 So. 62nd St., Milwaukee, Wis.	
Hermansen, Mr. Edward, Route 1, Box 412 C, Racine, Wis.	.75
Hermansen, Mr. and Mrs. M., 1025 Walton Ave.	
Hess, Mrs. Robert, 2007 Harriet St.	5.00
Hjortness, Mr. and Mrs. Einer, 1020 Layard Ave.	19.00
Ivan, 1020 Layard Ave.	9.00
Lawrence, 1020 Layard Ave.	9.00
Hoffman, Mrs. Johanna, 1000 West Lawn Ave.	155.00
Hoffman, Mr. Louis (transfer), 826 Main St.	4.00
Hoffman, Mr. Olaf, 917 Forest St.	17.00
Holman, Mrs. Jacob, 910 State St.	19.00
Goido, 910 State St.	10.75

Holtz, Mrs. Geo. A., 802 Hamilton St.	7.80
Horvath, Mrs. Joseph, 439 Randolph St.	5.00
Hultman, Mr. Richard, 223 LaFayette Ave.	
Humpa, Mrs. Stephen, 1406 Liberty St.	5.00

J

Jacobsen, Mr. and Mrs.*** Anton, 2315 E. 20th St.	50.00
Jacobsen, Mr. George, 2244 Orvington Ave., Evanston, Ill.	
Roy, 426 West Blvd.	11.00
Jacobsen, Mr. and Mrs. Arnold, 2821 Wright Ave.	64.00
Jacobsen, Mr. and Mrs. Carl, 1600 Park Ave.	97.10
Jacobsen, Mr. and Mrs. Chas., 1529 Packard Ave.	10.00
Jacobsen, Mrs. Chas., Route 2, Box 333, Racine, Wis.	14.00
Jacobsen, Mr. and Mrs. Jens M., 909 Ninth St.	45.00
George, 1606 West St.	2.75
James (service), 909 Ninth St.	
James, Mrs. Christ, 2126 Carmel Ave.	4.00
Jaskulske, Mrs. August, 910 Hamilton St.	34.00
Jensen, Mrs. A.***, 3415 Kinzie Ave.	31.00
Jensen, Mr. and Mrs. Aage, 2515 Arlington Ave.	27.00
Aage, Jr., 2515 Arlington Ave.	5.00
Betty*, 2515 Arlington Ave.	4.40
Jensen, Mr. and Mrs. Albert M., 1428 Quincy Ave.	12.00
Jensen, Mr. and Mrs. Alfred, 426 West Blvd.	57.00
Roy, 426 West Blvd.	11.00
Glen*, 426 West Blvd.	
Jensen, Miss Carol, 1917 State St.	.10
Harry, 1917 State St.	
Jensen, Miss Caroline, 1513 Blaire Ave.	14.00
Jensen, Mr. and Mrs. Deane, 3221 Republic Ave.	7.50
Jensen, Miss Marilyn, 1513 Blaine Ave.	4.40
Jensen, Mr. and Mrs. Christ, 1723 West Sixth St.	4.00
Larry, 1723 West Sixth St.	.50
Jensen, Mr. and Mrs. Elmer, 824 Prospect St.	22.15
Barbara, 824 Prospect St.	9.40
Jensen, Mr. George (trans.), 1518 Minnie St.	31.00
Jensen, Mrs. Ida, 1546 Phillips Ave.	35.00
Jensen, Mr. and Mrs. J. C., 2129 Carmel Ave.	81.00
Jensen, Mr. and Mrs. John, 1811 West Sixth St.	29.00
Jensen, Miss Margaret, 422 Melrose, Chicago, Ill.	154.00
Jensen, Mr. and Mrs. R. O., 1813 Clayton Ave.	15.00
Jensen, Mrs. Thomas, 1402 Chatham St.	5.30
Jensen, Mrs. Victor, Oak Hill Dist., Placerville, Calif.	
Jensen, Mrs. William, 831 Jackson St.	.50
Jensen, Mr. and Mrs. William, 1316 LaSalle St.	1.95
Farrel, 1316 LaSalle St.	6.70
Shirley, 1316 LaSalle St.	5.00
Starling, 1316 LaSalle St.	1.70
Jepsen, Mr. and Mrs. Hans, 1536 Kearney Ave.	115.00
Jepsen, Mr. Martinus, 1648 Boyd Ave.	105.00
Johns, Mr. and Mrs. Marvin E., 2211 Rupert Blvd.	2.00
Johnson, Mrs. Christ, 1122 Rode Ave.	12.30
Johnson, Mr. and Mrs. Curtis (Student), Kelley, Ia.	22.50
Johnson, Mr. and Mrs. Howard, 1800 North Main St.	34.00
Johnson, Mrs. Irving, 2711 Charles St.	15.00
Johnson, Miss Joann, 912½ Lockwood Ave.	
Kenneth W., 912½ Lockwood Ave.	
Johnson, Mr. and Mrs. J. H., 1712 Hamilton St.	47.00
Johnson, Mr. and Mrs. Lester, 332 Wicham Blvd.	
Johnson, Mrs. Robert, 1309 Douglas Ave.	.50
Johnson, Mr. and Mrs. Victor, 1940 Deane Blvd.	15.00
Johnson, Mrs. Walter, 1329 Carlisle Ave.	10.00
Jorgensen, Mr. and Mrs. Christ, 1020 Blaine Ave.	46.50
Eleanor, 1020 Blaine Ave.	11.50
Ella, 1020 Blaine Ave.	5.00
Jorgensen, Mr. Anker Edmond, P.O. Box 1663, Santa Fe, New Mexico	
Jorgensen, Mr. and Mrs. Erik, 712 Madsen Ct.	24.50
Jorgensen, Mr. Folmer, 439 Randolph St.	15.00
Jorgensen, Mrs. Herbert, 712 Lake Ave.	1.00
Jorgensen, Mr. and Mrs. Holger**, Route 3, Greenbay Rd.	

Jorgensen, Mr. and Mrs. Jerome, 1108 Wisconsin Ave.	77.00	Joyce, 1321 West Blvd.	10.00
Jorgensen, Mr. and Mrs. L. A., 928 Blaine Ave.	85.00	Miller, Mrs. Emily, 709 Chicago St.	25.00
Lucille, 928 Blaine Ave.	32.50	Miller, Mrs. Harold, 1332 Kewaunee St.	26.80
Junker, Mr. and Mrs. Omar, 1811½ West Sixth St.	97.75	Mogensen, Mr. and Mrs. Holger, 2138 Clarence Ave.	1.00
K			
Kasprovich, Mrs. Harold, 341 Main St.	3.50	Monday, Mr. Earl W., Milwaukee, Wis.	
Keykal, Mrs. David, 520 Barker St.	49.00	Monefeldt, Mrs. Henrietta, 2025 Carmel Ave.	
King, Mr. and Mrs. Clarence, 3716 Haven Ave.	77.00	Monefeldt, Mr. and Mrs. Norman, 2209 Geneva St.	50.00
Sally, 3716 Haven Ave.	13.00	Doris, 2209 Geneva St.	9.75
King, Mrs. Florence, 910 Huron St.		Rosemary, 2209 Geneva St.	1.60
Klingberg, Mr. and Mrs. Carl, 4100 Spring St.	150.00	Mortensen, Miss Beverly, 1613 Hamilton Ave.	
Alice, 4100 Spring St.	190.50	Mortensen, Mr. C. Wilhelm, 821-14th St.	25.00
Grace, 4100 Spring St.	85.00	Mortensen, Mrs. L., 1217 Erie St.	
Knudsen, Mr. and Mrs. George, 2404 Olive St.	28.00	Glen, 1217 Erie St.	
Kouski, Mr. and Mrs. Joe, 940 Marquette St.	31.50	Irma, 1217 Erie St.	
Jeanne, 940 Marquette St.	17.40	Mortensen, Miss Verna, 1121 Lewis St.	16.50
Krause, Mrs. Lowell, Route 1, Box 35, Sturtevant, Wis.	10.00	Moskovitz, Mrs. Viola, 2005 Quincy Ave.	17.00
Kreuscher, Mr. and Mrs. Warren, Route 2, Franksville, Wis.	2.50	N	
Kwapil, Mrs. Lily, 1524 West St.		Nelsen, Miss Olga, 728 Cleveland Ave.	300.00
L			
LaBlanc, Mrs. Harold, 1217 Jones Ave.	25.00	Nelson, Mr. and Mrs. Chris, 1552 Boyd Ave.	38.00
LaFave, Mr. Donald, 237 Howland Ave.	17.75	Nelsen, Mr. and Mrs. Peter, 1415-14th St.	2.00
LaFave, Mr. and Mrs. Isadore, 1225 Highland Ave.	20.75	Nelson, Mr. and Mrs. Chris, 3119-17th St.	
Lamp, Miss Nettie, 1214 Cleveland Ave.	67.10	Stanley, 3119-17th St.	
Lang, Mrs. Johanna, 2167 Clarence Ave.	24.25	Nielsen, Mr. and Mrs. Erik, 3321-4th Ave.	21.00
Lois, 2167 Clarence Ave.	3.80	Nielsen, Mr. Louis, Hotel Racine	175.00
Lange, Miss Edith, 1832 Taylor Ave.	34.75	Nielsen, Mr. Martin, 955 Washington Ave.	5.00
Lange, Mrs. John C., 725 Blaine Blvd.	45.00	Nielsen, Mr. N. P., 1014 Milwaukee Ave.	8.00
Langenfeld, Mr. and Mrs. Byron, 722 Orchard St.	210.00	Nielsen, Mr. Roosevelt, 1217 Jones Ave.	22.50
Langenfeld, Mrs. Dora, 728 Cleveland Ave.	55.00	Nielsen, Mr. Sigfred, 1287 Mound Ave.	
Larsen, Mrs. Cora**, 736 Main St.	4.00	Nielsen, Mrs. Soren D., 1548 Phillips Ave.	
Larsen, Mr. Jerome, 736 Main St.		Normolle, Mrs. Marion, 1117 Marquette St.	18.00
Larsen, Mr. Dewayne (transfer), 518 Randolph St.		O	
Larsen, Mr. and Mrs. Eugene H. B., 736 Main St.		Olsen, Mr. and Mrs. Arthur, 1829 Clayton Ave.	18.00
Larsen, Mr. and Mrs. George, 737 Park Ave.	117.00	Olsen, Mrs. Charles, 1312 Hamilton St.	8.50
Larsen, Mrs. Harry, 1838 Roe Ave.	5.35	Clarence, 1312 Hamilton St.	7.25
Larsen, Mr. James, 2020 Thurston Ave.		Harvey, 1312 Hamilton St.	10.00
Larsen, Miss Jean, Route 2, Box 53-C, Franksville, Wis.	28.25	Vernon G., 1312 Hamilton St.	9.00
Larsen, Mrs. L., 1955 Lawn St.	18.00	Olsen, Mr. and Mrs. Donald A., 2425 Blaine Ave.	25.00
Larsen, Mr. and Mrs. Lawrence, 1714 Erie St.	22.50	Olsen, Mr. LeRoy, 2910 Charles St.	5.00
Rosemarie, 1714 Erie St.	62.00	Olsen, Mrs. M.**, 2116 Prospect St.	43.50
Thomas, 1714 Erie St.	20.25	Olsen, Miss Florence, 2116 Prospect St.	270.50
Larsen, Mrs. Oline, 1126 Albert St.	12.00	Olsen, Mr. and Mrs. Norman, 617 Monroe Ave.	17.00
Lenestrand, Miss Ragna, 2044 Kinzie Ave.	63.25	Marion (student), 617 Monroe Ave.	
Lettsome, Mrs. Grace, 2509 Ashland Ave.	1.00	Olsen, Mr. and Mrs. O. C., 2232 Kinzie Ave.	20.00
Lettsome, Miss Joyce, Route 1, Box 287, Racine, Wis.	2.55	Olsen, Mr. Wm. L., 2025 Arthur Ave.	
Liegler, Mr. and Mrs. Arthur, 1709 Grand Ave.		Ortel, Mrs. George, 1014 Albert St.	32.50
Lindgren, Mrs. Lawrence, 736 Main St.	4.50	Arlene*, 1014 Albert St.	2.00
Lorenzen, Mr. and Mrs. Thor, 3202 Republic Ave.	3.00	Dorothy, 1014 Albert St.	5.50
Dorothy, 3202 Republic Ave.	108.00	Harry, 1014 Albert St.	
Richard (student), 3202 Republic Ave.		Ottosen, Mr. Sophus, Route 2B, Kalispell, Mont.	
Lund, Mr. and Mrs. Henry, 828 Wolff St.	200.00	P	
Jean, 828 Wolff St.	8.00	Pecore, Miss Lucille, 1526 Grand Ave.	17.50
Joan, 828 Wolff St.	2.05	Petersen, Mrs. Agnes, 414 Randolph St.	42.00
M			
Madsen, Mr. and Mrs. Wm., 414 Randolph St.	53.00	Petersen, Mr. and Mrs. Arthur J., 1504 Deane Blvd.	19.75
Magnussen, Rev. and Mrs. O. V., 1130 Mound Ave.	251.00	Petersen, Mrs. Camilla, 2117 Carmel Ave.	8.50
Makholm, Mrs. M., 1842-12th St.	6.50	Isabelle, 2117 Carmel Ave.	38.00
Martin, Mr. and Mrs. A. V., 909 Washington Ave.	81.00	Russell, 2117 Carmel Ave.	21.00
Gerald, 909 Washington Ave.	6.00	Petersen, Mr. Charles, 332 Wicham Blvd.	37.50
John, 909 Washington Ave.	5.20	Petersen, Miss Ellen K., 2221 Superior St.	44.00
James, 1810 N. Green Bay Road	9.00	Petersen, Miss Emma A., 2123 Clarence Ave.	160.00
Matson, Mrs. Christ, 2148 Kinzie Ave.	50.00	Petersen, Mr. and Mrs. Ernest E., 2012 Carmel Ave.	125.00
McAbee, Mrs. Beverly, 1319 N. Wisconsin St.		Petersen, Mr. Ervin, 1622 Linden Ave.	2.00
Melvin, Mrs. W. E., 712 Lake Ave.	125.00	Petersen, Mr. Everette, 1430 Clark St.	
Mielke, Mr. Warren**, 900 Romaine Ave.		Petersen, Mr. and Mrs. Fred, 283 Frank Ave.	21.00
Miles, Mrs. Gertrude, 1600 Park Ave.	15.05	Petersen, Mr. Gerald, 1402 Washington Ave.	2.60
Miles, Mrs. William, 1321 West Blvd.	20.00	Petersen, Mr. and Mrs. Gordon A. J., 1528 Arthur Ave.	82.20
		Petersen, Mr. and Mrs. James L., 2303 Hansen Ave.	43.00
		Petersen, Mr. and Mrs. J. P., Indian Waters Resort, Minn- qua, Wis.	25.00

Petersen, Mr. Julius H., 411 Randolph St.	76.00	Simonsen, Mr. and Mrs. Wilfred, 2521 Coolidge Ave.	4.00
Russell G., 411 Randolph St.	95.00	Smith, Mrs. Robert, 3019-21st St.	
Pedersen, Mr. and Mrs. Louis, 1626 Thurston Ave.	38.40	Sorensen, Mr. and Mrs. Alfred, 1518 May St.	9.00
Pedersen, Miss Anna, 1626 Thurston Ave.	20.00	Sorensen, Mr. and Mrs. Alfred J., 913 Blaine Ave.	85.00
Petersen, Mr. and Mrs. Mark, 2224 Eric St.	35.00	Sorensen, Miss Alvilda, 2023 St. Clair St.	55.00
Petersen, Mr. and Mrs. Mogens, Route 3, Box 486, Racine, Wis.	49.00	Sorensen, Miss Anna, 3305 Washington Ave.	46.00
Eva, Route 3, Box 486, Racine, Wis.	21.30	Laura, 3305 Washington Ave.	74.50
James*, Route 3, Box 486, Racine, Wis.		Marie, 3305 Washington Ave.	128.00
Vernon*, Route 3, Box 486, Racine, Wis.		Sorensen, Mr. and Mrs. Christ, 624 Randolph St.	31.00
Petersen, Mr. and Mrs. Nels, 2044 Kinzie Ave.	34.50	Ewald (Student), 412 Walton Place, Madison, Wis.	14.00
Petersen, Mr. and Mrs. P. C., 1530 Isabelle Ave.	3.50	Sorensen, Miss Fern, 1406 Liberty St.	5.00
Albert, 1530 Isabelle Ave.	18.00	Sorensen, Mr. and Mrs. M., 1825 Spring St.	45.00
Arnold, 827 Park Ave.		Sorensen, Rev. N. P., 1834 Taylor Ave.	204.00
Calvin, 1530 Isabelle Ave.	1.50	Sorensen, Mr. and Mrs. Norman, 1838 Roe Ave.	16.00
Erna, 1530 Isabelle Ave.50	Sorensen, Mr. Wallace, 2709 Green St.	27.15
Harry W., 1530 Isabelle Ave.		Stewart, Mrs. L. P., 2402 Olive St.	30.00
Kenneth, 1629 Milwaukee Ave.	1.00	Stewart, Mrs. Roy, 1544 Kearney Ave.	70.00
Rose, 1530 Isabelle Ave.	1.70	Stougaard, Mr. and Mrs. Chris, 1229 Kingston Ave.	18.00
Violet, 1530 Isabelle Ave.	5.25	Stougaard, Mr. and Mrs. Niels, 2127 Clarence Ave.	21.00
Petersen, Mr. and Mrs. Viggo J., Route 1, Box 176-B, Sturtevant, Wis.	9.00	Norman, 2127 Clarence Ave.	
Polzin, Mr. and Mrs. Vernon, 1924 Hayes Ave.	22.50	Suma, Mrs. Mildred, 1917 State St.	
Poulsen, Mr. Elmer, 1130 Main St.	100.00	Sundsted, Mr. and Mrs. Christ, 3318 Osborne Blvd.	26.00
Poulsen, Mr. and Mrs. Geo., 316 Island Ave.	26.2	Sundsted, Miss Adell, 1610 Blaine Ave.	100.00
Poulsen, Mr. Einer, 316 Island Ave.	5.25	Sundsted, Mr. Fred, 1610 Blaine Ave.	70.00
Poulsen, Mr. and Mrs. Jens, 2104 Kinzie Ave.	6.00	Sundsted, Mr. and Mrs. T. C., 1125 Blaine Ave.	250.00
Poulsen, Mr. Jens, 714 Lathrop Ave.	15.00	Swan, Mr. and Mrs. Jack, 1612 West Sixth St.	30.00
Poulsen, Mr. and Mrs. Julius, 1929 Prospect St.	36.00		
Poulsen, Mr. and Mrs. Roy E., 716 Arthur Ave.	80.00	T	
Joan (Student), 716 Arthur Ave.		Thompson, Mrs. Carl, 500 LaFayette Ave.	34.00
Protheroe, Mrs. R., 1323 N. Main St.	9.05	Thomsen, Mr. and Mrs. Ludwig, 2424 Thor Ave.	50.20
Keith, 1323 N. Main St.	11.60	Erna, 2424 Thor Ave.	7.05
LeRoy, 1323 N. Main St.	6.65	Olav, 2424 Thor Ave.	18.75
Psiones, Mrs. John, 905 So. Barstow St., Waukesha, Wis.	25.00	Thompson, Mr. and Mrs. Carl, 2013 Slausen Ave.	39.00
		Carol (Student), 416 N. Murray Ave., Madison, Wis.	
		Thomson, Miss Emma, 1614 Taylor, Ave.	66.25
		Thomsen, Mr. and Mrs. Peter, 121 So. Hamilton Ave., Madison, Wis.	30.00
		Traeger, Miss Isabelle, 1402 Chatham St.	31.50
		Treiber, Mr. and Mrs. Joseph, 1019 Pearl St.	10.00
		U	
		Unger, Mr. and Mrs. Frank, 2633 E. 11th St., Joplin, Mo. ...	See 1949
		V	
		Vogel, Mrs. W., 1838 Carlisle Ave.	27.00
		Varhol, Mr. Bernhard, 1227 Maple Ave., Libertyville, Ill. ...	
		Van Valzah, Mrs. J., 1329 Carlisle Ave.	28.10
		William, 1329 Carlisle Ave.	2.00
		Vojtko, Mr. and Mrs. Andrew, 1023 Pacific Ave., Waukegan, Ill.	15.00
		Richard, 1023 Pacific Ave., Waukegan, Ill.	
		Vojtko, Mrs. Eugene, 2226 Racine St.50
		W	
		Webster, Mrs. Rose, 1964 State St.	3.25
		Wendt, Mrs. Jacob, 1214 Cleveland Ave.	28.00
		White, Miss Marie, 5550 Kenmore Ave., Chicago, Ill.	25.00
		Wiese, Mrs. Ludwig, 1009 Kingston St.	
		Wisby, Mr. and Mrs. Richard, 1218 Highland Ave.	15.00
		Wolfe, Mrs. Harold, 2517 Ashland Ave. (Resigned)	
		Wolff, Mrs. Lorraine, 1114 Rode Ave.	16.00
		Wolter, Mr. and Mrs. Edgar, 1102 Prospect St.	62.00
		Woodward, Mr. and Mrs. Earl, 1021 Arthur Ave.	102.25
		James, 1021 Arthur Ave.	4.15
		Jane, 1021 Arthur Ave.	18.15
		Robert, 1021 Arthur Ave.	16.00
		PAROCHIAL REPORT FOR 1948	
		Baptized members 965	Total baptized 27
		Confirmed members 658	Total confirmed 21
		Voting members 481	Total married 18
		Total communicants for the year 1309	Total funerals 16

Q

R

S

REPORT OF ORGANIZATIONAL TREASURERS

THE SUNDAY SCHOOL

Balance, January 1, 1948	\$ 13.13
Total Receipts	
Collections or dues	\$666.85
Gifts	82.51
Other sources	23.21
	<u>772.57</u>
	\$785.70
Total Disbursements	
Local	\$387.19
Missions	261.26
	<u>648.45</u>
Balance as of December 31, 1948	\$137.25
Number enrolled (16 teachers)	179
Average attendance	109

Loretta Burg, Treas.

THE BIBLE CLASS

Balance, January 1, 1948	\$ 26.90
Collections	158.51
Total	<u>\$185.41</u>
Disbursements	
Lesson Books	\$ 41.77
Missions	65.50
	<u>107.27</u>
Balance, January 1, 1949	\$ 78.14
Members: 30	

Russell H. Petersen, Treas.

THE BENEVOLENT SOCIETY

Balance, January 1, 1948	\$ 33.64
Total Receipts	
Assessments	\$599.00
Bond sold	398.50
	<u>\$1031.14</u>
Total Disbursements	
Benevolences paid	\$628.00
Death Benefit	100.00
	<u>728.00</u>
Balance, January 1, 1949	\$ 303.14
Members: 84	

Russell H. Petersen, Treas.

FRIDAY FELLOWSHIP GROUP

Balance, January 1, 1948	\$22.69
Collections	7.81
Total	<u>\$30.50</u>
Disbursements	
Blackboard for nursery	\$ 7.85
Films, refreshments, etc.	22.22
	<u>30.07</u>
Balance, December 31, 1948	\$.43
Average attendance: 20	

Mrs. Ralph Rayner, Sec.-Treas.

SENIOR CHOIR

Balance, January 1, 1948	\$143.06
Total Receipts	
Total weekly collections	\$ 34.74
Concert contributions	105.84
Donation from Council for robes	255.00
	<u>395.58</u>
	\$538.64
Total Disbursements	
Plants, gifts	\$ 22.36
Donation to Council for robes	50.58
Robes	452.90
Refreshments, miscellaneous	7.59
	<u>533.43</u>
Balance, December 31, 1948	\$ 5.21

Members: 27

Doris Monfeldt, Treas.

LUTHER LEAGUE

Balance, January 1, 1948	\$ 73.21
Total Receipts	
Collections	\$ 30.28
Projects	141.38
	<u>171.66</u>
	\$244.87
Total Disbursements	
Dues and Missions, Supplies	236.94
Balance, January 1, 1949	\$ 7.93

Members: 20

Jane Woodward, Treas.

MISSION SOCIETY

Balance, January 1, 1948	\$206.97
Total Receipts	
Dues and Offerings	\$217.75
Donations and Gifts	72.85
Miscellaneous	23.10
	<u>313.70</u>
	\$520.67
Total Disbursements	
W. M. S.	\$215.00
Missionaries	170.85
Bethany Children's Home	52.20
Postage	19.29
	<u>457.34</u>

Balance, December 31, 1948 \$ 63.33

Members: 66

Emma A. Petersen, Treas.

ENGLISH LADIES' AID

Balance, January 1, 1948	\$ 11.94
Total Receipts	
Collections or dues	\$103.15
Projects and donations	139.48
	<u>242.63</u>
	\$254.57

Total Disbursements	
Local	\$ 92.46
Missions	135.25
	227.71
Balance, December 31, 1948	\$ 26.86
Margaret Petersen, Treas.	

DANISH LADIES' AID

Balance, January 1, 1948	\$ 1.42
Total Receipts	
Dues and collections	\$129.31
Gifts	107.35
Other sources	75.53
	312.19
	\$313.61
Reserve Fund	\$ 56.57
Interest on Reserve Fund44
Bertha Olson in memory of Mrs. Olson	50.00
	107.01
	\$420.62
Total Disbursements	
Local	\$ 84.58
Missions	172.50
	257.08
Balance, December 31, 1948	\$163.54
Members: 66	
Mrs. P. Brown, Treas.	

EMMAUS BROTHERHOOD

Balance, January 1, 1948	\$130.11
Total Receipts	
Dues and Collections	\$104.55
Other sources	52.66
	157.21
	\$287.32
Total Disbursements	
Local	\$ 17.70
Missions	182.05
Ball Team	24.15
	223.90
Balance, December 31, 1948	\$ 63.42
(F. & M. Savings Acct. \$57.67; Cash \$5.75)	
Members: 40	
Henry Lund, Treas.	

NEWS FROM SUDAN

The Mission Society sends us this news from the Sudan, through Mrs. Klingberg.

Psalm 126:6—"He that goeth forth and weepeth, bearing seed for sowing, shall doubtless come again with joy, bringing his sheaves with him."

"After 30 or more years of work in the African fields, Rev. and Mrs. Alfred Thompson bring results in the form of sheaves. Here are two that we received recently. An appeal was made for pencils and paper which are hard to get in the Sudan. Our Mission Society responded and sent several boxes to them. One letter is from a native teacher and the other from a pupil.

"There is also Ezra who is now riding from village to village on a brand new bicycle given by our Bible class. This way he can make places much quicker than his feet would carry him with

the news of salvation to those still in darkness. Let us pray often for them."

"To the Emmaus Mission Society:

"I am sending you many thanks. I hope this letter will reach you with our very best wishes. We got two parcels, pencils and books. We are thanking you very much in our school. May our Lord bless the American people very much, for their kindness is very great to us. I am one of our teachers who am writing to you and showing you how glad we are. Our children in our school are about 160 children, and we had much work in this year. Pastor Hansen reached our station in good health and we were very glad to see his face, but we are hoping to see you some day. We know that if we do not see you in this world we shall meet in Heaven. Pray to our Lord that our work will be faithful before God. Our Christians will be meeting in Numan headquarters 19-2-49. There are many people from everywhere to come in. The children in the school are greeting you very much. My two daughters are greeting you. Greet everybody in Christ for me.

Sincerely, your son
Edmund Muncako
Numan, Nigeria"

"To the Emmaus Mission Society:

"I am very glad for your pencils that you sent to us. We are thanking you no end. We are praying God to let you live well. All our teachers and pupils are thanking you very much. In this year we have many children in our school. There are about 160, most of them are boys. We are very glad that Rev. Hansen has come to see our work. We are praying God to take him back very well to his home. Amen.

"After this, we also thank the people of America because they are remembering us. Now if Rev. and Mrs. Thompson go back we may not have any Europeans to help us. God be with you and help you to be well. Amen. All our school boys are greeting you. I am your friend,

Jeremiah Myaredo"

EMMAUS NOTES

Rev. Sigurd Petersen of Royal, Iowa, has accepted the call extended to him. He will preach his farewell sermon at the Bethlehem Lutheran Church on May 29th.



Attention Luther Leaguers! Plan to attend the Southern Circuit Luther League Rally to be held April 24th at Our Savior's Lutheran Church, Racine. Service at 3:30 p.m., guest speaker will be Rev. C. C. Klawitter, radio speaker from Lutheran Bible Institute, Minneapolis. Also there will be a banquet at 7:00 p.m.

The Mid-Winter Bible Conference will be held at Our Savior's Lutheran Church Sunday evening April 24th through Thursday evening, April 28th. Rev. C. C. Klawitter will be the speaker.

Men! Men! Men! Can you sing? The choir is very much in need of some tenors and basses. Anyone over 16 wishing to join should see Mrs. Jean Simonsen, president. This too is part of the Lord's work.

For the Wednesday evening Lenten services Rev. Berg is conducting a series of character sketches entitled "Faltering Footsteps." Be sure to attend.

The Friday Fellowship had no regular meeting in March, but a travelogue from the Milwaukee Railroad was shown after the Lenten service, March 9th. Following this refreshments were served. A joint Racine and Kenosha Fellowship Group has been planned for April.

The Mission Society had Rev. Karl Wilhelmson of Gethsemane as their guest speaker on March 8th. He gave a message on Evangelism, and Mrs. Rigmor Petersen sang two solos.

To help those putting out the Emmaus Messenger and the weekly bulletin, will all officers and program chairman please fill out the schedule posted on the bulletin board with program, special music, and items of interest.

On Good Friday, April 15th, services will be held from 12:00 noon to 3:00 p.m. at Holy Communion Church, Carmel Avenue, and Atonement Lutheran Church, corner of Wright and Quincy.

At the meeting of the English Ladies' Aid on March 16th, the topic "Canned Christianity" was presented by Rev. Berg.

A Fireside Hour for the congregation was followed by a pot-luck supper, Sunday, March 13th. Rev. Berg was the speaker and special music was provided by the Luther League.

OUR MINISTRY OF MERCY

Mrs. Jacob Holmen fell and broke her forearm the first part of March. Mrs. Esther Gething and Jean Larsen are still at Sunny Rest. Mrs. Gething is about the same; Jean is coming along well. Mrs. C. B. Thompson is still confined to her home. Mrs. Stanley Burdick who fell and cracked her upper arm is beginning to get around again. Mr. and Mrs. Julius Poulsen still remain on the shut-in list. Mrs. Carolyn Larsen is getting along very well.

FROM THE CHURCH RECORDS

At the Altar

Calvin Wahlen, 1022 Lockwood Avenue, and Loretta Burg, 1319 Hamilton Street, were united in marriage on February 26, 1949, at Emmaus by Rev. E. R. Andersen. Mrs. Catherine Miller and Leonard Wahlen served as witnesses. The bride and groom will make their home at 1307 Terrace Avenue.

DANISH AID IS 66 YEARS OLD

The Emmaus Danish Ladies' Aid is now 66 years old. On January 25, 1883, Rev. Lyngby, Emmaus pastor at that time, suggested that it might be well to start such an organization. Although a Ladies' Aid had been tried in 1871, it was dissolved because the men objected to the women having meetings. Since the men no longer objected, Rev. Lyngby felt that a ladies' organization would be a great help in meeting church expenses.

The Emmaus Danish Ladies' Aid proved a real help all through the years and could always be depended upon to give a lift when needed. A few of the projects are as follows:

In 1923, a great bazaar was held to help get a new heating system installed in the church and the basement was re-modeled. At that time the Danish Ladies' Aid had 150 members.

In 1935, when the auditorium of the church was decorated, the Danish Ladies' Aid furnished the carpet in the aisle and around the altar.

In 1942, the Danish Ladies' Aid furnished dishes and silverware to serve 100 people.

Missions, orphanages and needy are always helped as much as possible every year.

At present the Emmaus Danish Ladies' Aid has 64 members. The drop in membership is easily understood. For many years there were no immigrants and the younger women joined the English Ladies' Aid.

The older women are happy to gather and listen to a program in the language of their fatherland. We are always glad to join our sister Aid on all special occasions.

Anyone that is interested and can understand the Danish language is most cordially invited to join us.

A SERMON FROM SHOES

(Continued from page 2)

"But, your reverence, it is not possible, if the boots are to fit," said the shoemaker, thinking to himself that the old pastor's wits were leaving him.

"Ah, then, master shoemaker," said the clergyman, "every pair of boots must be made on their own last, if they are to fit; and yet you think that God is to form all Christians exactly according to your own last, of the same measure and growth in religion as yourself. That will not do either."

The shoemaker was abashed. Then he said: "I thank your reverence for this sermon, and I will try to remember it; and to judge my neighbors less harshly in the future."

"New Testament Anecdotes," Hodder and Stoughton, New York.

When everything goes dead wrong, look and see if you are not facing in the wrong direction.

ALAS! AND DID MY SAVIOUR BLEED?

The blind hymn-writer, Fanny Crosby, tells of her conversion in the old Thirtieth Street Methodist Episcopal Church, New York City, in November 1850: "After a prayer was offered, they began to sing the grand old consecration hymn, 'Alas! and Did My Saviour Bleed?' and when they reached the third line of the fifth stanza, 'Here, Lord, I give myself away,' my very soul flooded with celestial light."

Alas! and did my Saviour bleed,
And did my Sov'reign die?
Would He devote that sacred head
For sinners such as I?

But drops of grief can ne'er repay
The debt of love I owe.
Here, Lord, I give myself away,
'Tis all that I can do.

Children need models more than they need critics.

—Joseph Joubert.

REV. BERG SERVES AS INTERIM PASTOR

We have been fortunate in obtaining Rev. Frank Berg as interim pastor for March and April. Rev. Berg comes to Emmaus from the Lutheran Bible Institute of Chicago, where he taught Biblical Interpretation and did a great deal of field work at Bible conferences in the winter and at Luther League Bible Camps in the summer. Prior to his teaching he held a pastorate in Firesteel, South Dakota. He is a graduate of the Lutheran Theological Seminary in St. Paul and of St. Olaf's College in Northfield, Minnesota.

Rev. Berg's wife is a graduate of the Lutheran Bible Institute in Minneapolis. She taught school, did parish secretary work, as well as serving as a visiting parish worker, before her marriage. The Bergs have twins, David and Dawn, who are four years old. They are living at the parsonage at present and Rev. Berg can be reached at Jackson 1110 any time you need him.

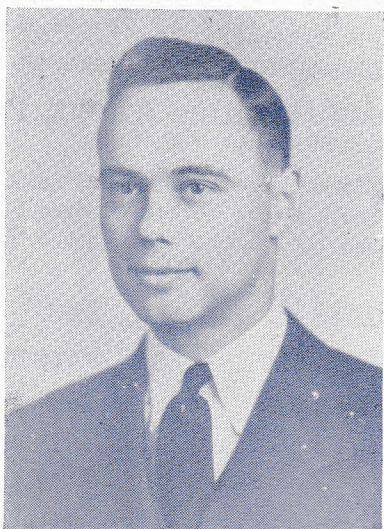
PROSPECT 6652

SHOP and SAVE

Food Market

1502 STATE ST.

PROSPECT 6652



GREETINGS FROM THE BERGS

"How do you like Racine?" is a question we are frequently asked these days. How can we help but like it here when the congregation is so friendly and good to us? We want to say a hearty "thank-you" to all who have been of such real help these first days of our ministry in your midst.

"Is there anything we can do for you?" some have inquired. There is one great favor I would ask of the congregation—your prayer support. It means so much to us to sense that many of you are praying for us. Please continue!

"I am among you as he that serveth," stated the Savior to His disciples. Since that same Savior indwells His servants today, we come seeking to serve. Please feel free to call on us whenever we can be of help.

We have but one great objective in this brief ministry in Racine: to hold forth Jesus, that saint and sinner alike may rejoice anew in Him, and hear His call to become fishers of men. Let's all join hands, making one great net that shall draw many into an "Emmaus walk" with the Living Lord.

THE SACRED STAIR

Near the splendid church of St. John de Lateran is the famous Scala Sancta, or Sacred Stair, supposed to be brought from Jerusalem—the same steps down which our Saviour walked from Pilate's hall of judgment to the hill of Calvary. These steps are 25 in number, made of solid marble, and covered with wood to keep them from being worn away by the knees of the climbing pilgrims. Those pilgrims on Easter week come from all parts of the world. They are different colors, and ranks, and ages, and I watched them beginning to climb this "holy stair," slowly creeping up, counting their beads, crossing their faces, and muttering their "Ave Marias" and "Paternosters" as they went. Near the top was a full-sized image of the Saviour made of wood, crowned with thorns, and wearing the marks of His wounds on His temples, and hands, and side, and feet. Around this "image" of Jesus a group of women were gathered. It was sad to see their pitiful looks and hear their groaning prayers, as they beat their breasts and kissed each wound, from the pierced feet to the thorn-crowned head. Poor people!

they were quite in earnest, but they were sadly self-deceived. They thought that for every step they climbed, they received indulgence or pardon for the sins of a year! Therefore, when they reached the top, they thought that sins of 25 years were blotted out; so that, taking their average life at fifty, two visits to the Sacred Stair would carry them to the "gates of heaven."

I thought of a noble man—namely, Martin Luther, who, three centuries ago, found the light of the gospel on that same stair. Dressed as a monk, with his shaven head and bare knees, he was creeping up those marble steps, hoping thereby to calm his troubled conscience and work his way to heaven, when all at once the voice of God was heard crying in his soul, "The just shall live by faith." Obedient to the heavenly voice, he saw his error of trying to earn his title to salvation by his own pains and works; and leaving the city in disgust, he went home to nail his "Theses" to the church door at Wittenberg, and to kindle the fire of the glorious Reformation.

Yes, Luther found the true way to heaven, not by climbing that Sacred Stair on his naked knees, but by simple faith in Jesus, who said, "I am the way, the truth, and the life: no man cometh to the Father, but by Me." If you would ever enter heaven, you must do it by the same way.

New Testament Anecdotes, Hodder and Stoughton
New York.

The world is full of willing people: some willing to work—the rest willing to let them: —Frost.

The only way to have a friend is to be one. —Emerson.

HAVE WE FOUND TIME TO BE ALONE TODAY?

Maren Fabricius

"Have you and I
Stood silent, as with Christ, apart from joy or fear
Of life, to see by faith His face;
To look, if but a moment, at its grace,
And grow, by brief companionship, more true,
More nerved to lead, to dare, to do
For Him at any cost? Have we today
Found time, in thought, our hand to lay
In His and thus compare
His will with ours, and wear
The impress of His wish? Be sure
Such contact will endure
Throughout the day; will help us walk erect
Through storm and flood; detect
Within the hidden life sin's dross, its stain;
Revive a thought of love for Him again;
Steady the steps which waver; help us see
The footpath meant for you and me."

All who joy would win must share it, happiness was born a twin. —Lord Byron.

Sec. 562 P. L. & R.
U. S. POSTAGE
PAID
Blair, Nebraska
Permit No. 18

OUR ADVERTISERS MAKE THIS PAPER POSSIBLE

State Street Hardware Co.

Tools - Builder's Hardware
Household Appliances
Paint - Wallpaper - Floor Covering
1002-04 State St. Prospect 738

Dine at
HOTEL RACINE
Overlooking Lake Michigan
Moderate Priced Dining Room

**Christiansen's Chapel,
INC.**
FUNERAL DIRECTORS
Serving Racine over Fifty-Five Years

ROY E. POULSEN
REAL ESTATE — MORTGAGE LOANS
All Forms of Insurance
1420 Washington Ave. Pros. 7481

Houman's Fish Market
Fresh—Smoked—Salted Fish
1028 State St. Jackson 2107

MERCHANTS DELIVERY
Moving and Storage Company
Insured Movers - - Bonded Warehouses
1215 State St. Prospect 70

Creator of Styles in Fine Jewelry
CARL JACOBSEN
Jeweler 422 Main St.
Jackson 4088

Farmers' & Merchants' Bank
CHECKING AND SAVINGS ACCOUNTS
Service Consistent with Good Banking
Member of the Federal Deposit Ins. Corp.
1012 State Street

Thompson Gasoline Alleys, Inc.

"BETTER GAS FOR LESS"
Goodyear Tires - - Quality Fuel Oils
6th & Marquette - - 16th & Murray
Douglas & Yout - - - - 16th & Racine

Asdahl & Nelson, Inc.
BUILDING MATERIALS — PAINTS
1231 State Street Jackson 561

SEE
Martin Christensen Company
If you need a Home, a Loan or Insurance
1412 Owen Ave. Jackson 6670

HANSEN HEARING AID SERVICE
A. W. HANSEN
Arcade Building - Room 219
423 Main Street - Jackson 4953
The Microtone Company

Engildsen Bakery
Kringles and Danish Pastry
"Our Products Are Favorites"
1506 State St. Jackson 4475

**Racine Junction Building and
Loan Association**
Martin Christensen, Secretary
1603 Washington Avenue Jackson 490
SAVINGS insured to \$5,000. PROFITABLE
HOME LOANS to BUY—BUILD—REFINANCE
Dividends paid or credited semi-annually.

Dorothy Beck Ott or Ralph Ott
SAY IT WITH FLOWERS
FROM
OTT FLOWER SHOP
620 State St. Jackson 3366

Ericksen Drug Store
Myron Ericksen, R.Ph.
1100 State St. Prospect 1223

Emmaus Messenger

From EMMAUS LUTHERAN CHURCH

Volume III

Racine, Wisconsin, April, 1949

Number 4



*"And whosoever cometh,
I will not cast him out.
O patient love of Jesus,
Which drives away our doubt;*

*Which, though we be unworthy
Of love so great and free,
Invites us very sinners
To come, dear Lord, to Thee".*

W. C. Dix

Emmaus Messenger

Published Monthly by the



EMMAUS LUTHERAN CHURCH

1134 Mound Avenue Racine, Wisconsin

FRANK BERG, Interim Pastor

Phone: Jackson 1110 1130 Mound Avenue

Publication Committee: Henry Lund, Ernest Petersen, George Hansen

Lutheran Publishing House

SUNDAY SERVICES

Sunday School and Bible Classes.....9:00 a.m.
Morning Worship.....10:10 a.m.

OTHER MEETINGS

Danish Ladies' Aid.....Second Wednesday 2:00 p.m.
English Ladies' Aid.....Third Wednesday 2:00 p.m.
Church Council.....First Tuesday 7:45 p.m.
Luther League.....Each Sunday 6:30 p.m.
Church Choir.....Each Thursday 8:00 p.m.
Missionary Society.....Second Tuesday 8:00 p.m.
Brotherhood.....Last Tuesday 8:00 p.m.
Fellowship Group.....Second Wednesday 8:00 p.m.
Teacher's Meeting.....Third Tuesday 8:00 p.m.
Bible Class Teachers.....Third Monday 8:00 p.m.
Benevolent Society.....Second Monday 8:00 p.m.
Cradle Roll Workers.....Quarterly 8:00 p.m.
Confirmation Classes.....Saturday 9:30 a.m.

NEWS FROM CALIFORNIA

Immanuel Lutheran
Parsonage of Easton
Rt. 12, Box 342
Fresno, California

Dear Friends of Emmaus:

Since the last installment we have arrived in Easton, six miles south of Fresno on Highway 41. Our church is located on the corner of Lincoln and Elm, one of the main intersections of the community. It is more extensive than we had at first thought, scattered about the highway, and neatly arranged in the midst of half-mile roads labelled "avenues". This makes it very easy to locate our people.

Our church is a white frame church seating about as many as Emmaus because of a "cross" effect. The old parsonage lies north of it; the social hall lies west of it. A few sycamore trees lie between this social hall and the new parsonage on Lincoln. Just across from us on the south is a lovely union high school; just west of the parsonage is a huge athletic field for all kinds of sports. We have a sizable piece of land back of the parsonage for either winter or summer garden and a new lawn will be soon seeded about our new home. A hedge and fence will also be added for privacy from the roving students and for the benefit of the children. A little patio, for which a lovely English walnut tree will provide the shade, is entered from the dining room facing the north. Laundry room with three-quarters bath is adjacent to this with garage attached. On various corners are huge eucalyptus shade trees bearing and shedding leaves continually. The sycamores are not yet out. But the fragrance of yellow-flowered acacia trees from neighboring grounds fill the air. Flowering at the present are also various colored quinces, apricot, peach, and plum trees. Except for slightly higher temperatures, spring seems to come just like in Wisconsin.

We are installed by Pacific District President, Rev. George Robertson of Los Angeles, on Sunday, March 6th, at a festive service. There are always some qualms about beginning in a new place, but the friendly smiles and cordiality with which we were so familiar in Emmaus, soon began to appear and we felt at home almost immediately. In the afternoon the parsonage was to be dedicated at 3:30 p. m. following a dinner of fried chicken and potato salad in the social hall. It was really crowded. Various discussions seemed to indicate that plans for a new one would be considered soon, largely because of needed space for the Sunday School, which is now making use of rooms in the old parsonage. Neighboring pastors were invited for the afternoon and present were Pastors Justesen, Rasmussen, Wildrick, Henry Hansen, Bach, A. P. Andersen with some of their families. Rev. A. W. Lund, who had been serving during the vacancy was master of ceremonies at the services in the church, and here greetings were brought by pastors, and laymen of the congregation. The group then proceeded to the parsonage, which was still empty since the van had not arrived, and President Robertson dedicated the building with the appropriate scripture. Then with a "værs'go" ("be so kind") Pastor Magnusson invited all to tour the new home. Perhaps about two hundred guests went through. We had been living in the parsonage during the day with borrowed dishes,

(Continued on page 3)



EMMAUS NOTES

Easter Morning was a festive occasion for Emmaus Lutheran with a Sunrise Service, Luther League Breakfast, and Easter Festival Worship Service. The Senior Choir, the Luther League Choir, and the confirmation class provided the music for the Sunrise Service, and Pastor Berg's message was "He Is Risen".

The festive music for the Easter Service was provided by the Senior Choir and Mrs. Ethel Christensen. "The Crucified Christ Lives Today" was the inspiring message given by Pastor Berg.

The sanctuary of the church was beautifully decorated by the Luther League with plants sent by members and a cross made of white lilies.

The total amount of the offering given at both Easter services was \$253.59. It is to be sent to the Lutheran Student Association at Madison, Wisconsin for their work.

A series of five Wednesday night Bible Studies for the congregation, April 20th through May 25th, will be conducted by Pastor Berg. The subject of study is I John — prepare by reading this book in private or family devotion. A fine group attended Wednesday, April 20th, and we hope to see many more at each of the other studies. Be sure to attend.

The Rummage Sale given by the English and Danish Ladies' Aids on April 8th at the Community Hall on De Koven Avenue cleared over \$100.00.

Many of the Luther Leaguers attended the Luther League Rally, April 24th, at Our Savior's Lutheran Church. The speaker for the rally was Rev. C. C. Klawitter from the Lutheran Bible Institute in Minneapolis.

If there is anyone who is not receiving their "Messenger", or if it is being sent to the wrong address, please notify Elaine Hansen, Pros. 4121 W, so that the proper corrections may be made.

OUR MINISTRY OF MERCY

Mrs. H. M. Hansen and **Mrs. A. V. Martin** have returned from the St Mary's and are improving; **Floyd Spangler** (Cradle Roll) and **Stanley Burdick** have also returned home from St. Mary's and are better; **Mrs. Sofia Jensen** has returned home from the St. Luke's and is improving; **Ervin Hansen** has also returned home from St. Luke's; **Mrs. Olaf Davidson** was all at home, but is better now; **Mrs. Esther Gething** and **Jean Larsen**, both at Sunny Rest, are showing improvement.

Our congratulatory to the following parents on recent additions to the family: Mr. and Mrs. James Gardinier, Mr. and Mrs. Harry Larson, Mr. and Mrs. Lowell Krause, and Mr. and Mrs. George Grabber.

FROM THE CHURCH RECORDS
At the Font

Ronald Howard Johnson, son of Mr. and Mrs. Howard Johnson, born February 4, 1949, was baptized March 27, 1949, at Emmaus Lutheran. Sponsors were Mr. and Mrs. Cornell Johnson.

Jay Stephen Petersen, son of Mr. and Mrs. Arnold Petersen, born March 15, 1949 was baptized at Emmaus Lutheran on April 17, 1949. Sponsors were Mr. and Mrs. Peter Thomsen.

Linda Susan Kaprovich daughter of Mr. and Mrs. Harold Kasprovich, born February 6, 1949, was baptized April 17, 1949 at the church. Sponsors were Mrs. George Pecore and Leroy Kasprovich.

John Forest Elzinga, son of Mr. and Mrs. August E. Elzinga, born February 10, 1945, was baptized at Emmaus Lutheran on April 20, 1949. Sponsors were Mrs. Oscar Scheel and Dorothy Rauwerda.

NEWS FROM CALIFORNIA

(Continued from page 2)

chairs and cardtable, but sleeping at night at the home of Mr. and Mrs. A. P. Juhl. While waiting for our things we put up curtain rods, waxed floors, unpacked books and linens which had arrived in advance by other means. When finally the word came that our van would be here on March 9, we held our breath for fear it would not come true. It arrived promptly and we were unloaded by 3:30 that afternoon with everything in good shape. No explanation was offered for the delay since drivers had changed every so often, but apparently other loads were responsible. That was a week ago, and by now we are fairly settled except for some books and pictures. We have just started to call on a few of the older and sick folks this week and are finding out where people live.

We have a neighboring minister of the United Presbyterian church and further north Rev. Niels Nielsen of the Danish Lutheran.

Stephen has three short blocks to school and has just started again this week after breaking his arm the moment the van had left. He grabbed for a telephone pole while riding his bicycle and lost his balance. The arm was broken just above the elbow and was quite difficult to set. A new doctor had just arrived in town and we were among his first callers. However, because of the X-raying involved we had to go to Fresno, and after several trips, an orthopedist verified the fact that no additional manipulation was necessary. We are happy it was no worse, although he will have the cast on for about eight weeks.

When we first came we had rain about every other day, but it was the first they had had, and certainly was needed. Now the weather is balmy and everyone is out in their gardens. Peach orchards are in full bloom — a lovely time of the year here.

Note:

The above letter was received from The Magnussens the latter part of March, but it came too late to be printed in the March issue of the "Messenger".

PROSPECT 6652

PROSPECT 6652

SHOP and SAVE

Food Market

1502 STATE ST.

Sec. 562 P. L. & R.
U. S. POSTAGE
PAID
Blair, Nebraska
Permit No. 18

OUR ADVERTISERS MAKE THIS PAPER POSSIBLE

State Street Hardware Co.

Tools - Builder's Hardware
Household Appliances
Paint - Wallpaper - Floor Covering
1002-04 State St. Prospect 738

Dine at
HOTEL RACINE

Overlooking Lake Michigan
Moderate Priced Dining Room

Christiansen's Chapel, INC.

FUNERAL DIRECTORS
Serving Racine over Fifty-Five Years

ROY E. POULSEN

REAL ESTATE — MORTGAGE LOANS
All Forms of Insurance
1420 Washington Ave. Pros. 7481

Houman's Fish Market

Fresh—Smoked—Salted Fish
1028 State St. Jackson 2107

MERCHANTS DELIVERY

Moving and Storage Company
Insured Movers - - Bonded Warehouses
1215 State St. Prospect 70

Creator of Styles in Fine Jewelry

CARL JACOBSEN

Jeweler 422 Main St.
Jackson 4088

Farmers' & Merchants' Bank

CHECKING AND SAVINGS ACCOUNTS
Service Consistent with Good Banking
Member of the Federal Deposit Ins. Corp.
1012 State Street

Thompson Gasoline Alleys, Inc.

"BETTER GAS FOR LESS"

Goodyear Tires - - Quality Fuel Oils
6th & Marquette - - 16th & Murray
Douglas & Yout - - - - - 16th & Racine

Asdahl & Nelson, Inc.

BUILDING MATERIALS — PAINTS
1231 State Street Jackson 561

SEE

Martin Christensen Company

If you need a Home, a Loan or Insurance
1412 Owen Ave. Jackson 6670

HANSEN HEARING AID SERVICE

A. W. HANSEN
Arcade Building - Room 219
423 Main Street - Jackson 4953
The Microtone Company

Engildsen Bakery

Kringles and Danish Pastry
"Our Products Are Favorites"
1506 State St. Jackson 4475

Racine Junction Building and Loan Association

Martin Christensen, Secretary
1603 Washington Avenue Jackson 490
SAVINGS insured to \$5,000. PROFITABLE
HOME LOANS to BUY—BUILD—REFINANCE
Dividends paid or credited semi-annually.

Dorothy Beck Ott Ralph Ott

SAY IT WITH FLOWERS

FROM

OTT FLOWER SHOP

620 State St. Jackson 3366

Ericksen Drug Store

Myron Ericksen, R.Ph.
1100 State St. Prospect 1223

Emmaus Messenger

From EMMANUS LUTHERAN CHURCH

Volume III

Racine, Wisconsin, May, 1949

Number 5



*There is a way,
By worldly man forsaken,
A living way,
Which only few have taken,
A hidden trail
Thro' hills and vale
That leads to streams of living water.*

N. F. S. Grundtvig.

Emmaus Messenger

Published Monthly by the



EMMAUS LUTHERAN CHURCH

1134 Mound Avenue Racine, Wisconsin

FRANK BERG, Interim Pastor

Phone: Jackson 1110 1130 Mound Avenue

Publication Committee: Henry Lund, Ernest Petersen, George Hansen

Lutheran Publishing House

SUNDAY SERVICES

Sunday School and Bible Classes.....9:00 a.m.
Morning Worship.....10:10 a.m.

OTHER MEETINGS

Danish Ladies' Aid.....Second Wednesday 2:00 p.m.
English Ladies' Aid.....Third Wednesday 2:00 p.m.
Church Council.....First Tuesday 7:45 p.m.
Luther League.....Each Sunday 6:30 p.m.
Church Choir.....Each Thursday 8:00 p.m.
Missionary Society.....Second Tuesday 8:00 p.m.
Brotherhood.....Last Tuesday 8:00 p.m.
Fellowship Group.....Second Wednesday 8:00 p.m.
Teacher's Meeting.....Third Tuesday 8:00 p.m.
Bible Class Teachers.....Third Monday 8:00 p.m.
Benevolent Society.....Second Monday 8:00 p.m.
Cradle Roll Workers.....Quarterly 8:00 p.m.
Confirmation Classes.....Saturday 9:30 a.m.

FAMILY WORSHIP

The advantages of the family worship are many and great. It draws down the blessing of God upon the domestic circles. We have the special assurance that where two or three are gathered in Christ's name, He will be with them. One must shut his eyes, not only against God's promises, but against reason and fact, who does not recognize its hallowed influences above such households where united worship is observed. Its restraining influence upon all the annoyances and disturbances of family peace is most powerful and valuable. How can the inmates of a dwelling cherish unkind feelings toward each other while uniting in common prayer? More effectual than words of reproof, or chastisement, and adding power to all other means of family discipline, is the honored custom. Better family government, more forbearance and courtesy and all that makes home pleasant, does the altar erected to God assure.

Family worship is of unspeakable advantage in maintaining all the other observances of religion. Family devotion and public worship are like the stone of an arch, each holding together and sustaining those above and below, nor can one be taken away without weakening the whole. If at the family altar, God be worshipped we shall go from thence to His house, to His sacramental table, to our private devotions with increased interest and profit. Then, too, what a noble confession before men is family worship! Let an irreligious person visit a home where God is fervently called upon, His Scriptures read, and he cannot fail to be favorably impressed and made to feel that this is something in which Christians differ from the world, and he may be led to Christ and personal salvation.

Lutheran Bible Institution Tract

BROTHERHOOD NOTES

In 1928 Rev. E. R. Andersen suggested that a Men's Brotherhood organization be formed. The suggestion was heeded, and on January 29, 1929, twenty-six men of Emmaus organized into the Brotherhood of Emmaus Church. At that time, Christ Christensen was chosen as chairman and Arnold Jacobsen as temporary secretary.

The object of the group was to promote Christian fellowship, to create the spirit of helpfulness in the church work. This year's project is to assist the Oaks Indian Mission to secure a movie projector.

The first permanent officers elected were: Walter Nielsen — President, Henry Lund — Vice President, Arnold Jacobsen — Secretary, and Norman Monefeldt — Treasurer.

Ever since organizing, the Brotherhood of Emmaus has successfully carried on their regular meetings with many fine educational and inspiring religious programs. At present, the Brotherhood supports the baseball team made up of the younger men of the church.

We also have the movie projector which we maintain and which is available to all groups desiring to use it.

The present officers are: Omar Junker—President, Rocco Farina — Vice President, Reuben Andersen — Secretary, and Milton Burdick — Treasurer.

EMMAUS NOTES



Pastor Berg and his family will be leaving our congregation on May 31st. Their stay with us has been a blessing to all. May God bless their work in their new place.

Rev. Harold Floreen of the National Lutheran Division of American Missions and Department of the Christian Approach to the Jewish People will speak at Emmaus on Sunday, June 19th at 7:45 p.m. Keep this date in mind and plan to attend.

The Luther Leaguers enjoyed an outing at Booth Lake Sunday May 25th in spite of the cloudy, rainy weather. There were about twenty-five there and all enjoyed games followed by supper. Following this was a devotional held around a camp fire. Jerry Martin presented the topic which was followed by a singspiration. Leaguers, join in and help make your League a working League.

A Family Altar Presentation given at the Mothers' Day worship service included Mr. and Mrs. Alfred Sorensen, Jack Sorensen, Richad Christensen, and Jane Woodward. It streded devotion and worship to God as a family.

Th exterior of the parsonage, the parsonage bath and kitchen, and the custodian's home were painted several weeks ago.

A number of the members of the Danish Ladies' Aid housecleaned the kitchen of the church about a week ago.

OUR MINISTRY OF MERCY

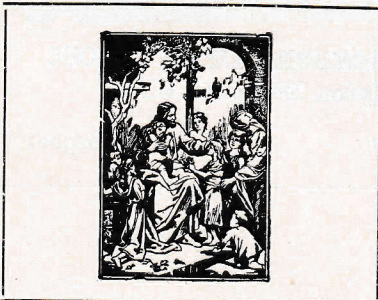
Mrs. Russell Prothero is now at home and is improving; **Stanley Burdick** is also at home and is better; **Mrs. Camila Petersen** has now recovered from an attack of the flu; **Mrs. Charles Jacobsen** has recovered from a sprained ankle; **Mrs. Soren Hansen** has been ill for several weeks now; **Jean Larsen** and **Mrs. Esther Gething**, both at Sunny Rest, are showing improvement; **Kenneth Fought** has returned home from St. Luke's.

FROM THE CHURCH RECORDS

At the Font

Sue Carol Gustavson, daughter of Mr. and Mrs. Melvin Gustavson, born December 31, 1948, was baptized at Emmaus on April 24th. Sponsors were Mr. and Mrs. Robert Smith.

Russel John Gardinier, son of Mr. and Mrs. James Gardinier, born March 20, 1949, was baptized May 15th at Emmaus. Sponsors were Mr. and Mrs. Samuel Gardinier.



At the Grave

Rasmus Jensen, 1813 Clayton Avenue, age 85, passed away on April 29, 1949, at St. Luke's Hospital, and was buried in Graceland Cemetery on May 2, 1949 after services at the Hanson Funeral Home. Mr. Jensen was born in Denmark on December 21, 1863, and he had resided in Racine for the past 40 years. Among the be-
 reaved are one daughter, Mrs. Wesley Francis, one granddaughter, both of Racine; one brother, Soren, in Minnesota; and one sister in Denmark. We offer our sincere sympathy.



Pastor Sigurd D. Petersen is a native of Kenmare, North Dakota, but for many years his home has been in Hutchinson, Minnesota.

He had his schooling at Dana College, St. Olaf College, Maywood Lutheran Seminary, and Trinity Seminary. He was ordained in 1929 and has held pastorates at Clinton, Wisconsin; Owatonna, Minnesota; Kenmare, North Dakota; and Royal, Iowa.

Pastor and Mrs. Petersen have a family of three children: Delores — 13, Verla Mae — 8, and David — 5.

Pastor Petersen will arrive in Racine on June 1st and will conduct his first service at Emmaus on June 5th. He will be installed on June 12th.

O HAPPY Home

O happy home, where thou art loved the dearest,
 Thou loving Friend and Savior of our race,
 And where among the guests there never cometh
 One who can hold such high and honor'd place!

O happy home, whose little ones are given
 Early to Thee in humble faith and prayer,
 To Thee, their friends, who from the heights of heaven
 Guides them, and guards with more than mother's care.

O happy home, where each one serves Thee lowly,
 Whatever his appointed work may be,
 Till every common task seems great and holy,
 When it is done, O Lord, as unto Thee!

C. I. P. Spitta

PROSPECT 6652 SHOP and SAVE Food Market E PROSPECT 6652
 1502 STATE ST.

Sec. 562 P. L. & R.
U. S. POSTAGE
PAID
Blair, Nebraska
Permit No. 18

OUR ADVERTISERS MAKE THIS PAPER POSSIBLE

State Street Hardware Co.

Tools - Builder's Hardware
Household Appliances
Paint - Wallpaper - Floor Covering
1002-04 State St. Prospect 738

Dine at HOTEL RACINE

Overlooking Lake Michigan
Moderate Priced Dining Room

Christiansen's Chapel, INC.

FUNERAL DIRECTORS
Serving Racine over Fifty-Five Years

ROY E. POULSEN

REAL ESTATE — MORTGAGE LOANS
All Forms of Insurance
1420 Washington Ave. Pros. 7481

Houman's Fish Market

Fresh—Smoked—Salted Fish
1028 State St. Jackson 2107

MERCHANTS DELIVERY

Moving and Storage Company
Insured Movers - - Bonded Warehouses
1215 State St. Prospect 70

Creator of Styles in Fine Jewelry

CARL JACOBSEN

Jeweler 422 Main St.
Jackson 4088

Farmers' & Merchants' Bank
CHECKING AND SAVINGS ACCOUNTS
Service Consistent with Good Banking
Member of the Federal Deposit Ins. Corp.
1012 State Street

Thompson Gasoline Alleys, Inc.

"BETTER GAS FOR LESS"

Goodyear Tires - - Quality Fuel Oils
6th & Marquette - - 16th & Murray
Douglas & Yout - - - - 16th & Racine

Asdahl & Nelson, Inc.

BUILDING MATERIALS — PAINTS
1231 State Street Jackson 561

SEE

Martin Christensen Company

If you need a Home, a Loan or Insurance
1412 Owen Ave. Jackson 6670

HANSEN HEARING AID SERVICE

A. W. HANSEN
Arcade Building - Room 219
423 Main Street - Jackson 4953
The Microtone Company

Engildsen Bakery

Kringles and Danish Pastry
"Our Products Are Favorites"
1506 State St. Jackson 4475

Racine Junction Building and Loan Association

Martin Christensen, Secretary
1603 Washington Avenue Jackson 490
SAVINGS insured to \$5,000. PROFITABLE
HOME LOANS to BUY—BUILD—REFINANCE
Dividends paid or credited semi-annually.

Dorothy Beck Ott Ralph Ott

SAY IT WITH FLOWERS
FROM

OTT FLOWER SHOP

620 State St. Jackson 3366

Ericksen Drug Store

Myron Ericksen, R.Ph.
1100 State St. Prospect 1223

Emmaus Messenger

From *EMMAUS LUTHERAN CHURCH*

Volume III

Racine, Wisconsin, June, 1949

Number 6



Interior View of Emmaus Lutheran Church

Emmaus Messenger

Published Monthly by the



EMMAUS LUTHERAN CHURCH

1134 Mound Avenue Racine, Wisconsin

SIGURD D. PETERSEN, Pastor

Phone: Jackson 1110 1130 Mound Avenue

Publication Committee: Henry Lund, Ernest Petersen, George Hansen

Lutheran Publishing House

SUNDAY SERVICES

Sunday School and Bible Classes.....9:00 a.m.
Morning Worship.....10:10 a.m.

OTHER MEETINGS

Danish Ladies' Aid.....Second Wednesday 2:00 p.m.
English Ladies' Aid.....Third Wednesday 2:00 p.m.
Church Council.....First Tuesday 7:45 p.m.
Luther League.....Each Sunday 6:30 p.m.
Church Choir.....Each Thursday 8:00 p.m.
Missionary Society.....Second Tuesday 8:00 p.m.
Brotherhood.....Last Tuesday 8:00 p.m.
Fellowship Group.....Second Wednesday 8:00 p.m.
Teacher's Meeting.....Third Tuesday 8:00 p.m.
Bible Class Teachers.....Third Monday 8:00 p.m.
Benevolent Society.....Second Monday 8:00 p.m.
Cradle Roll Workers.....Quarterly 8:00 p.m.
Confirmation Classes.....Saturday 9:30 a.m.

THE PASTOR'S MESSAGE

It is difficult to envisage a congregation of almost one thousand members. There must be a large variety of circumstance, professions, work, interests, and problems represented. Experience to such a large number of people must bring untold defeats as well as victories, sorrows, joys, sickness, health, disappointments, and unforeseen blessing. It is my desire that the ministry of the Word of God among you may be such that God's grace may abound to you all and that you may learn to know more fully the many possibilities of the life that is in Christ Jesus.

There is a common ground upon which even strangers can meet: our common need of forgiveness and salvation. There we must all begin, and out from that central experience of salvation, it is possible to learn how God can help us in all our needs.

My experience so far in the ministry has been in rural churches. It is intensely interesting to learn to know your city and the variety of work in which you are engaged. The people of our church live at nearly 400 different addresses. How soon one shall be able to call upon all our homes, is difficult to say. In the meantime kindly notify me when someone is sick. If you have problems with which I can assist you, come to my study or, if you wish, ask me to your home. None are so insignificant, neither in the eyes of God or the church, as to be neglected.

I shall deeply appreciate the many doing special work and holding special offices in the church. No doubt there will be much required of you.

In all our efforts this should be our objective: "for the equipment of the saints, for the work of the ministry, for building up the body of Christ, until we all attain to the unity of the faith and the knowledge of the Son of God, to mature manhood, to the measure of the stature of the fullness of Christ" (Eph. 4:12-13). This is a big order, but promising rich blessings.

WHAT IS THE ESSENCE OF CHRISTIANITY?

The farther time carries us from the historic Christ who is the Way, the Truth, and the Life, the more complex is the pattern of thought within Christendom. One who attempts to view Christendom as a whole sees diversity—divergent schools of thought, divergent creeds, and organizational walls. How all of this ever came to be named under the single title of Christianity the world can hardly realize. For this reason, no doubt, Jesus prayed that his followers should be one "that the world may know." The apparently discordant picture presented by Christendom is certainly not calculated to lead the world to know, nor to believe. The picture is to it a conundrum.

Dr. H. B. Jefferson, attempting from this viewpoint to arrive at a statement as to the essence of Christianity gives full expression to his mental perplexity. He writes, "In its long history Christianity has changed so radically and has absorbed so many influences that it becomes a problem to define its essence. Even in the first two centuries of our era there was such a variety of interpretations of the nature and significance of Christ that it is difficult to determine the common factor.

We must agree that if we are to seek for the es-
(Continued on page 3)

EMMAUS NOTES



On June 12th, Rev. Sigurd Petersen was installed as pastor of Emmaus. Rev. Frank Nielsen, District President, conducted the service. Before the installation ceremony a sermon was preached by Rev. Nielsen on II Timothy 4:2, and the choir sang the anthem "Seek Ye the Lord." After the oaths were taken by the church council and Rev. Petersen, an inspiring sermon was given by Rev. Petersen on Acts 20:24. The choir sang another anthem, "My God and I."

After the service, supper was served in the church basement. Sandwiches were brought by members of the congregation, and coffee, cream, and cake were provided by the Ladies' Aid. After supper there followed a "Get Acquainted Evening."

At the morning worship service on June 12th, two bronze altar vases were dedicated. The vases were donated by the Anton Jacobsen family in loving memory of Mrs. Anton Jacobsen.

Rev. Harold Floreen, Director of the Department of the Christian Approach to the Jewish People, National Lutheran Council, spoke at our church on Sunday, June 19th. The congregations of other Lutheran churches were also invited to attend.

The Wednesday-noon Spring Luncheon given by the Ladies' Aids the latter part of May was well-attended. Proceeds were about \$80.00.

Daily Vacation Bible School classes were held in our church from June 20th to July 1st. The classes were from 9:00 to 11:45 a.m. The School was under the direction of George DeMant, and the teachers were Mrs. William Atkinson, Mrs. Mark Petersen, and Mrs. Carl Frederiksen.

A joint Luther League Ice Cream Social was given on June 29th on the property purchased by Our Savior's. The proceeds will be used to charter a bus for those wishing to attend Bible Camp.

Dana Night, held at Gethsemane on June 7th was well-attended by young people of the four churches. Norman Bansen, former Public Relations Director spoke about Dana and also showed colored slides on Dana.

Our people are encouraged to listen to the Children's Chapel over Station WRJN, Saturdays at 9:45 a.m. It would also be appreciated if letters or cards were sent to the station expressing your opinion about this program.

Our congratulations to Mr. and Mrs. J. William Christensen and Mr. and Mrs. Floyd Bailey on the new arrivals.

A wise preacher in the Ozarks region advises his parishioners to "come early if you want a good back seat."

FROM THE CHURCH RECORDS

At the Altar

Ralph John Buelow, 1925 Prospect Street, and Mary Louise Burdick, 1647½ Douglas Avenue, were united in marriage on June 11th at Emmaus by Rev. Sigurd Petersen. Witnesses: Hugh O. Burdick and Dorothy M. Nissen. They will reside at 611 Wisconsin Avenue.

PRAYER

Lord, what a change within us one short hour
Spent in Thy presence will avail to make!
What heavy burdens from our bosoms take!
What parched grounds refresh as with a shower!
We kneel, and all around us seems to lower;
We rise, and all, the distant and the near,
Stands forth in sunny outline, brave and clear;
We kneel, how weak! We rise, how full of power!
Why, therefore, should we do ourselves this wrong,
Or others,—that we are not always strong—
That we are sometimes overborne with care—
That we should ever weak or heartless be,
Anxious or trouble—when with us is prayer,
And joy and strength and courage are with Thee?

—Richard C. Trench.

WHAT IS THE ESSENCE OF CHRISTIANITY?

(Continued from page 2)

sense of Christianity in the muddy stream of historic Christianity the task is discouraging. We will never arrive at the truth of Christianity by striking a common denominator of creeds. Christianity has its source in that special historic revelation which centers in Jesus Christ. That revelation is vouchsafed to the world in the Scriptures. In them there is the common core of truth upon which the Christian faith rests. Christ declared that it was the purpose of the Law, the Prophets, and the Writings to mirror him. Paul said of the Old Testament, "All Scripture is given by inspiration of God, and is profitable for doctrine, for reproof, for correction, for instruction in righteousness; that the man of God may be perfect, thoroughly furnished unto all good works." John the last writer of Scriptures, said concerning his writings, "These are written that ye might believe that Jesus is the Christ, the Son of God, and that believing ye might have life through His name."

To find the essence of Christianity, therefore, we must get the viewpoint of the Scriptures. Beneath the outer forms of Christianity there is a vein of life which stems from God. This is the essence of Christianity. That God the Creator loves the world, and has through Christ redeemed it; that man the creature, though he has sinned, may repent and respond with good faith to God's love; that God has a perfect purpose into which men may fit—here are the truths that lie at the center of Christianity. These truths are the core of the Gospel. The history of vital Christianity is thus identical with the extension of the life giving Word into the hearts and lives of men and peoples of the world. Too many historians have given us but the history of externalities and this history has many times grown complex and burdensome while the vital life process has been scarcely noticed. The actual church of Christ in any generation is that aggregate of persons in whom the living Word of God has been given reception, is being believed and is being obeyed.

—The Protestant Voice.

Sec. 562 P. L. & R.
U. S. POSTAGE
PAID
Blair, Nebraska
Permit No. 18

OUR ADVERTISERS MAKE THIS PAPER POSSIBLE

Joe Bohn General Trucking

COAL and KINDLING WOOD

1001 Gideon Court

Pros. 5536

Dine at
HOTEL RACINE

Overlooking Lake Michigan

Moderate Priced Dining Room

Christiansen's Chapel, INC.

FUNERAL DIRECTORS

Serving Racine over Fifty-Five Years

ROY E. POULSEN

REAL ESTATE — MORTGAGE LOANS

All Forms of Insurance

1420 Washington Ave.

Pros. 7481

Houman's Fish Market

Fresh—Smoked—Salted Fish

1028 State St.

Jackson 2107

MERCHANTS DELIVERY

Moving and Storage Company

Insured Movers - - - Bonded Warehouses

1215 State St.

Prospect 70

Creator of Styles in Fine Jewelry

CARL JACOBSEN

Jeweler

422 Main St.

Jackson 4088

Farmers' & Merchants' Bank

CHECKING AND SAVINGS ACCOUNTS

Service Consistent with Good Banking

Member of the Federal Deposit Ins. Corp.

1012 State Street

Thompson Gasoline Alleys, Inc.

"BETTER GAS FOR LESS"

Goodyear Tires - - Quality Fuel Oils

6th & Marquette - - 16th & Murray

Douglas & Yout - - - - - 16th & Racine

Asdahl & Nelson, Inc.

BUILDING MATERIALS — PAINTS

1231 State Street

Jackson 561

SEE

Martin Christensen Company

If you need a Home, a Loan or Insurance

1412 Owen Ave.

Jackson 6670

HANSEN HEARING AID SERVICE

A. W. HANSEN

Arcade Building

Room 219

423 Main Street

Jackson 4953

The Microtone Company

Engildsen Bakery

Kringles and Danish Pastry

"Our Products Are Favorites"

1506 State St.

Jackson 4475

Racine Junction Building and Loan Association

Martin Christensen, Secretary

1603 Washington Avenue

Jackson 490

SAVINGS insured to \$5,000. PROFITABLE
HOME LOANS to BUY—BUILD—REFINANCE
Dividends paid or credited semi-annually.

Dorothy Beck Ott

Ralph Ott

SAY IT WITH FLOWERS

FROM

OTT FLOWER SHOP

620 State St.

Jackson 3366

Ericksen Drug Store

Myron Ericksen, R.Ph.

1100 State St.

Prospect 1223

Emmaus Messenger

From *EMMAUS LUTHERAN CHURCH*

Volume III

Racine, Wisconsin, September, 1949

Number 7

THE PASTOR'S MESSAGE

It is quite apparent that no congregation can run on its own inertia. There is always work to be done. The field must be worked, not only in the center but also on the edges. No segment of any congregation must be neglected.

There is always present an urgency of renewed spiritual vitality which necessitates that Christians truly work and pray. They must be strong in faith and obedience. Everyone who is negligent in spiritual matters becomes a strain upon the life of the church. We can never escape the potent factor of our own being—what we are. Oh, Lord, may Thy grace abound in us lest we and they whom Thou hast given us be lost!

Vital spiritual life is sustained by prayer, the Word and the Sacraments. That is true of the individual as well as of the corporate church. It would seem, therefore, that the primary effort must be to get as many as possible of our members to church as often as possible. There are certainly other important phases of the work of the church, but this is imperative and shall be, I am sure, our common goal.

The summer months have brought many opportunities for enjoyment and needed relaxation in outings and vacations. Come September, our church services and work demand our attention and loyalty. We desire the greatest blessings for our mutual spiritual needs.

Humanity has always wrestled with the problem of immortality. The fact of life after death the Christian has accepted as a part of God's revelation. The denial of life after death has always seemed foreign in the presence of the human heart crying for life.

Whatever our concept of the life hereafter may be, it must include the idea that the future will be of the same quality as this present life, though intensified.

That is why the Bible is insistent upon salvation as an experience of this life. "Today if you hear His voice, harden not your heart." If God is a nuisance to you now, will He not be hereafter? If you dislike godliness in this life, do you suppose heaven will interest you? If to do the will of God is an abhorrence to you, must not the presence of God be unbearable?

MEET THE COUNCIL

In view of the fact that the names of the Council members have not been published in 1949, it has been suggested that they be listed in the Messenger.

The following are the officers presently serving:

Pastor Sigurd D. Petersen

President—Henry Anderson

Vice-President—Ernest Petersen

Secretary—Williston E. Reckhow

Financial Secretary—Fred Christensen

Treasurer—Chris Christensen

Trustees—Oscar Scheel, Chairman; Henry Lund; Chris Christensen

Deacons:

1. Elmer Poulsen (also Asst. Financial Secretary)
2. Gardner C. Clark
3. Ernest Petersen
4. William Atkinson (also Asst. Financial Secretary)
5. Einer Scheel
6. Hans Jepsen
7. Christ Jorgensen
8. John Hansen

BEHIND THE SCENES

In addition to the work done by the officers of the church and those of the various organizations, there are many jobs which are accomplished almost without notice—jobs which nevertheless have an important bearing in the activity of the church.

Here are some of the "behind the scenes" duties which are carried out in Emmaus Church:

Jane Woodward edits and duplicates the Sunday Bulletin.

Janet Anderson serves as a typist.

Julius Poulsen, with the pastor, administers the charity boxes.

Victor Anderson and Omar Junker serve as the Song Committee.

Our School Committee is made up of William Atkinson and Gardner Clark.

Alice Klingberg assists the pastor in the Luther League and also serves as assistant organist.

The Committee on Constitution includes Fred Simonsen, Chris Christensen and Williston Reckhow.

Oscar Scheel and Ernest Petersen make up the Committee on Pastors.

Emmaus Messenger

Published Monthly by the



EMMAUS LUTHERAN CHURCH

1134 Mound Avenue Racine, Wisconsin

SIGURD D. PETERSEN, Pastor

Phone: Jackson 1110 1130 Mound Avenue

Publication Committee: Henry Lund, Ernest Petersen, George Hansen

Lutheran Publishing House

SUNDAY SERVICES

Sunday School and Bible Classes.....9:00 a.m.
Morning Worship.....10:10 a.m.

OTHER MEETINGS

Luther League.....Each Sunday 6:30 p.m.
Church Choir.....Each Thursday 8:00 p.m.
Church Council.....First Tuesday 7:45 p.m.
Benevolent Society.....Second Monday 8:00 p.m.
Missionary Society.....Second Tuesday 8:00 p.m.
Danish Ladies Aid.....Second Wednesday 2:00 p.m.
Fellowship Group.....Second Wednesday 8:00 p.m.
Bible Class Teachers.....Third Monday 8:00 p.m.
Sunday School Teachers.....Third Tuesday 8:00 p.m.
Ladies' Aid.....Third Wednesday 2:00 p.m.
Brotherhood.....Last Tuesday 8:00 p.m.
Cradle Roll Workers.....Quarterly 8:00 p.m.
Confirmation Classes.....Saturday 9:00 and 10:30 a.m.

COMING EVENTS

Bishop H. Fuglsang Damgaard and his wife will visit in America for a month. They are due to arrive in New York September 6. Their itinerary will bring them to Racine on Sunday, September 18. Tentative plans call for two speaking engagements here: an English service at Immanuel Church in the morning and a joint Danish service in the evening at Gethsemane Church. The Bishop is Primate of the State Church of Denmark.

Pastor W. E. Wallner has been invited to speak at our morning service on September 11. Pastor Wallner had a pastorate in the Lutheran Church in Prague, Czechoslovakia, until 1939 when he was forced to flee to Poland. With a remnant of the Polish army, in which he became a chaplain, he finally reached England. Recently he has come to America and is associated with the Department for the Christian Approach to the Jewish People of the National Lutheran Council. God has blessed his labors in a remarkable way, and his story should greatly strengthen our faith in the message of the Gospel.

Our Pastors Committee is busy with plans for our fall mission meetings. These have been scheduled for October. The exact dates and the name of the speaker will be announced shortly.

The English Ladies' Aid is planning a rummage sale for October. Everyone is asked to gather items suitable for this sale.

The Wisconsin District Convention will be held at Denmark, Wisconsin, from September 1 to 4.

The Pastor announces that Confirmation Classes will be resumed on Saturday, September 10, with the time tentatively scheduled at 9:00 a.m. for the Seniors and 10:30 a.m. for the Juniors. A definite announcement will follow.

THIS IS YOUR PAPER

With this issue the Emmaus Messenger undergoes a change of editors.

Miss Elaine Hansen, who has done a very fine piece of work with the Messenger over the past several months, is leaving us to go to Dana—where, we are confident, she will have opportunity to use her talents in connection with the school newspaper and annual.

We will try very hard to measure up to the standards that the Messenger has set in the past, but we must remind the congregation that a newspaper of this kind is a church-wide venture. If everyone will pass on news to the editor—by mail, by phone or in person—the Messenger will be the kind of newspaper you want it to be.

We plan to bring out an issue on the first of every month—if sufficient material is available. News, announcements and reports should be in the editor's hands by the 18th of the month at the latest.

Let's make the Messenger informative in the present and interesting as history in the future.

Byron Langenfeld, Editor
722 Orchard Street
Phone: Jackson 5562 W

EMMAUS NOTES



The Annual Church and Sunday School Picnic was held at Lincoln Field on Sunday, August 14. A crowd of nearly three hundred enjoyed the program and the fine weather which accompanied it.

Among our college students this year are Paul Anderson who is returning to St. Olaf and Russell Scheel who will attend the University of Cincinnati. Emmaus will be represented at Dana College and Trinity Seminary by Elaine Hansen, LeRoy Andersen, George Demant and Harold Andersen.

Any clothing you cannot use, or wish to put to good use, is greatly needed by the Lutheran World Relief. Either bring it to the church or send it to: Lutheran World Relief, Inc., Easton Processing and Storage Company, North 13th Street and Bushkill Drive, Easton, Pennsylvania.

On the Emmaus sick list recently have been Mr. Morris Sorensen, Mrs. W. J. Andres, Mrs. Arthur Olsen and Mrs. Charles Clausen. Mr. Carl Klingberg has made a remarkable recovery from his serious accident of the early summer.

Among recent visitors to Emmaus were Mr. Andrew Gravesen, Marian, Carol and Shirley of Kenmare, North Dakota; Mr. Albert Stangl of Sheboygan, Wisconsin; Mrs. Lisle K. Pierce of Whiting, Indiana; Mr. and Mrs. Lester Johnson, Perry, Donovan and Wayne of Royal, Iowa; Mr. and Mrs. Frank Unger, Barbara, Carol and Linda of Joplin, Missouri; and Mrs. Lawrence Estep of Pulaski, Tennessee.

Holy Communion was received by eighty-five communicants at the August communion service.

The crucifix and the two candle holders on the altar will soon be plated to conform to the finish of the candleabra.

The natural time to rally Sunday school students is in the fall. With the end of vacation and the start of public school, parents should see that their children attend Sunday school regularly. An interesting program is being worked out for the coming year. In keeping with the procedure of the past few years, movies based on Bible stories will be shown on the last Sunday of each month.

A son, Douglas Scott, was born recently to Mr. and Mrs. Maynard Andersen at Blair, Nebraska. Maynard, who graduated from Dana last spring, has secured a teaching position in the junior high school at LaFayette, California, near Oakland.

Watch for announcements soon on the Evangelization Program which is scheduled to begin in the fall.

Fifty new serving trays have been purchased for the kitchen by the English Ladies' Aid.

Pastor Petersen reports an interesting and profitable three weeks' stay at Maywood, Illinois, where he audited two courses at the Chicago Lutheran Seminary: "The Preaching of Christian Doctrine" by Dr. R. R. Caemmerer of Concordia Seminary and "The Growth and Development of the Catholic Church" by Dr. Bernard Holm of Wartburg Seminary.

Emmaus was well represented at the Synodical Convention in Blair, Nebraska, June 21 to 26. Those at-

tending were Mr. Ernest Petersen, Mr. and Mrs. Henry Lund and Philip, Mr. and Mrs. Harry Andersen, Joline and Dennis, Mrs. Dora Langenfeld, Miss Olga Nelson, Mrs. Emily Miller and Pastors Sigurd Petersen and E. R. Andersen. In the voting delegation were Pastors Petersen and Andersen, Henry Lund, Ernest Petersen, Harry Andersen, Mrs. Langenfeld and Miss Nelson.

FROM THE CHURCH RECORDS

Wedding:

Eirar M. Paulsen and Romona A. Olsen of Ames, Iowa, were married on June 25.

Baptisms:

Linda Susan Bailey, daughter of Mr. and Mrs. Floyd Bailey, born June 11, 1949, baptized July 17. Sponsors: Mr. and Mrs. Armitage Mann.

James Ernest Christensen, son of Mr. and Mrs. J. Wm. Christensen, born May 31, 1949, baptized July 24. Sponsors: Mr. and Mrs. Frank Unger.

John William Linstroth, son of Mr. and Mrs. Tod Linstroth, born May 17, 1949, baptized August 28. Sponsors: Miss Lola Merrill and Mrs. Vernon Anderson.

Lonnie Wayne Kraemer, son of Mr. and Mrs. Allen Kraemer, born July 21, 1949, baptized August 7. Sponsors: Miss Helen Doolittle and Mr. Donald Davis.

Terry Robert Christensen, son of Mr. and Mrs. Thorvald Christensen, born May 5, 1949, baptized August 7. Sponsors: Mr. and Mrs. Kenneth Andersen.

Life with Christ is an endless hope; without Him it is a hopeless end.

Do you have the word "willing" in your prayer vocabulary? If not, be sure to add it. It will put power into your prayer.

A speaker at a missionary conference said that the object of that gathering was to work down the "missionary spirit." He explained that usually the missionary spirit first struck the head, after a while got as far as the mouth, then the heart, conscience and will, and by and by, the pocket, and last of all the legs and feet.—The Lutheran Colporteur.

The length of one's life is of less importance than its breadth and depth.

Others are affected by what I am and say and do. And these others have also these spheres of influence. So that a single act of mine may spread in widening circles through a nation of humanity.—Channing.

A Christian is no self-starter. He is a man set in motion by power from above.—Norborg.

Sec. 34.66 P.L.&R.
U. S. POSTAGE
PAID
Blair, Nebraska
Permit No. 18

OUR ADVERTISERS MAKE THIS PAPER POSSIBLE

Joe Bohn General Trucking

COAL and KINDLING WOOD

1001 Gideon Court

Pros. 5536

Dine at

HOTEL RACINE

Overlooking Lake Michigan

Moderate Priced Dining Room

Christiansen's Chapel, INC.

FUNERAL DIRECTORS

Serving Racine over Fifty-Five Years

ROY E. POULSEN

REAL ESTATE — MORTGAGE LOANS

All Forms of Insurance

1420 Washington Ave.

Pros. 7481

Houman's Fish Market

Fresh—Smoked—Salted Fish

1028 State St.

Jackson 2107

MERCHANTS DELIVERY

Moving and Storage Company

Insured Movers - - Bonded Warehouses

1215 State St.

Prospect 70

Creator of Styles in Fine Jewelry

CARL JACOBSEN

Jeweler

422 Main St.

Jackson 4088

Farmers' & Merchants' Bank

CHECKING AND SAVINGS ACCOUNTS

Service Consistent with Good Banking

Member of the Federal Deposit Ins. Corp.

1012 State Street

Thompson Gasoline Alleys, Inc.

"BETTER GAS FOR LESS"

Goodyear Tires - - Quality Fuel Oils

6th & Marquette - - 16th & Murray

Douglas & Yout - - - - - 16th & Racine

Asdahl & Nelson, Inc.

BUILDING MATERIALS — PAINTS

1231 State Street

Jackson 561

SEE

Martin Christensen Company

If you need a Home, a Loan or Insurance

1412 Owen Ave.

Jackson 6670

HANSEN HEARING AID SERVICE

A. W. HANSEN

Arcade Building -

Room 219

423 Main Street -

Jackson 4953

The Microtone Company

Engildsen Bakery

Kringles and Danish Pastry

"Our Products Are Favorites"

1506 State St.

Jackson 4475

Racine Junction Building and Loan Association

Martin Christensen, Secretary

1603 Washington Avenue

Jackson 490

SAVINGS insured to \$5,000. PROFITABLE

HOME LOANS to BUY—BUILD—REFINANCE

Dividends paid or credited semi-annually.

Dorothy Beck Ott

Ralph Ott

SAY IT WITH FLOWERS

FROM

OTT FLOWER SHOP

620 State St.

Jackson 3366

Ericksen Drug Store

Myron Ericksen, R.Ph.

1100 State St.

Prospect 1223

Emmaus Messenger

From *EMMAUS LUTHERAN CHURCH*

Volume III

Racine, Wisconsin, October, 1949

Number 8

THE PASTOR'S MESSAGE

It seems to me that we must always seek to understand the motive back of church work. Why do we want people to come to church? Why do we wish them to be Christians?

No one who is truly sincere in his Christian convictions has any selfish purposes in trying to persuade men to be Christian and active churchgoers. He is convinced that everyone needs Jesus. He knows this because of his own experience with Jesus and by the teachings of the Word. No one has experienced Christ truly without being prompted to love his fellowmen. The knowledge of man's need for Christ becomes alive with deep passion for souls because of Christ's love in the Christian's heart.

When someone is asked to come to church, there is generally an earnest desire back of the invitation and a knowledge of the fact that the preaching of the Word of God does bring Christ to the individual. Perhaps the one who speaks to you can only say, "I wish you would come to church." Maybe he cannot say more, but his simple statement may be packed with a deep passion for your eternal good. When once faith in Christ has come, that faith must be sustained through prayer, the Word and the sacraments — — that is, the worship service of the church.

Soon the program of Evangelism will be under way. It will be an earnest attempt to do God's work among our fellow men, within and without the churches. It is saying to all men, "We care, because we love Christ and we love you through Christ." You are asked to accept this expression as the genuine attitude of the church, in spite of human limitations.

In formulating a statement that could express the united opinion of the Lutheran churches within the National Lutheran Council on evangelism, this 'Foreword' was, after much thought, agreed upon: "Evangelism is winning men for Jesus Christ. It is bringing people to a consciousness of their sins and to an acceptance of Jesus Christ as their Lord and Savior; instructing them and sending them forth to bear witness to their faith, especially among the indifferent, the unchurched and the unsaved."

In order that we may understand its meaning, such a statement demands some serious thinking. The program itself will demand true consecration — not only of the lay visitors, but also of all who truly love the Lord. In prayer we must come to God for His grace and power, for we acknowledge that we cannot do anything without the Holy Spirit.

EVANGELISM PROGRAM PLANS COMPLETED

On March 11, 1947 representatives of the general bodies of the National Lutheran Council met in Chicago to initiate the work of evangelism. A total of four meetings were held in 1947. At the meeting of December 17, 1947, the following general body presidents were in attendance: Presidents Franklin Clark Fry, J. A. Aasgaard, Em. Poppen, T. O. Burntvedt and Vice-President Oscar A. Benson (representing President P. O. Bersell). At this meeting the program of evangelism was outlined and its cardinal points adopted: 1. Deepening of the spiritual life of the congregation through teaching and preaching missions; establishing the family altar; reviving the indifferent. 2. Reaching the unchurched of America through an aggressive program of witnessing by trained lay visitors.

The program of Evangelism has moved forward rapidly and has now reached our own community. On September 6 the pastors of the National Lutheran Council churches in Kenosha and Racine counties met in Racine to lay plans and receive instructions. About twenty-four pastors were present. By October 1 the lay visitors will be appointed. These will be men and women whose personal ability fit them for this type of church work or whose office in the church particularly qualifies them for the program.

A training institute for these lay visitors will be conducted in Racine by Pastor W. A. Troge at Emmaus on October 3 and at the Gethsemane Lutheran Church on October 5. Every lay visitor will be requested to attend at least one of these meetings.

At the Sunday morning service on October 16, the lay visitors — — who may number from 400 to 500 in the city of Racine — — will be commissioned to their great task in the presence of their various congregations. The program of actual visitation should begin on Monday evening, October 17.

There are some 70,000,000 unchurched people in the United States. The Lutheran Church must assume a major responsibility in confronting this vast multitude with Christ and His claim upon them. It cannot be done by the clergy alone; God never intended it so. It cannot be done by 10% of the members of the church. It demands a total witness of the total membership of the church. —Lutheran Commission on Evangelism

I give you the witness of a mother in a young family of four who joined a Lutheran church through adult confirmation and infant baptism. She said: "I never knew the church could mean so much."

Emmaus Messenger

Published Monthly by the



EMMAUS LUTHERAN CHURCH

1134 Mound Avenue Racine, Wisconsin

SIGURD D. PETERSEN, Pastor

Phone: Jackson 1110 1130 Mound Avenue

Publication Committee: Henry Lund, Ernest Petersen, George Hansen

Editor: Byron Langenfeld

Lutheran Publishing House

SUNDAY SERVICES

Sunday School and Bible Classes.....9:00 a.m.
Morning Worship.....10:10 a.m.

OTHER MEETINGS

Luther League.....Each Sunday 6:30 p.m.
Church Choir.....Each Thursday 8:00 p.m.
Church Council.....First Tuesday 7:45 p.m.
Benevolent Society.....Second Monday 8:00 p.m.
Missionary Society.....Second Tuesday 8:00 p.m.
Danish Ladies Aid.....Second Wednesday 2:00 p.m.
Fellowship Group.....Second Wednesday 8:00 p.m.
Sunday School Teachers.....Third Tuesday 8:00 p.m.
Ladies' Aid.....Third Wednesday 2:00 p.m.
Brotherhood.....Last Tuesday 8:00 p.m.
Cradle Roll Workers.....Quarterly 8:00 p.m.
Confirmation Classes.....Saturday 9:00 and 10:30 a.m.

CONFIRMATION CLASSES BEGIN

On Saturday, September 10, the confirmation classes resumed their studies after their summer vacation. This was their first instruction under Pastor Petersen.

Both the Senior and Junior classes are unusually large this year and are almost equal in size.

Seniors: Ronald Andersen, Nancy Andersen, Shirley Chernouski, Richard Christensen, Joyce Mae Christensen, George Clark, John Cook, Dan Dalsgaard, Joyce Demant, Gloria Gregory, Geraldine Hoogerhuis, Patricia Colt, Jane Junker, Gloria Krogh, Tom Lengenfeld, Robert Larsen, Patricia Meyer, Jeanette Polzin, Allyn Jack Sorensen, Nancy Thaege, William Allen and Fred Poulsen.

Juniors: Mary Larsen, Gail Bergman, Donna Mae Lettson, Alvin Jensen, James Junker, Warren Bergman, George Bergman, Jean Petersen, Delores Petersen, Yvonne Scheel, Jolene Andersen, Elanore Shilling, Robert Andersen, Thomas Meyer, Robert Monday, Phillip Uebe, Robert Berosrud, Doris Johnson and Karen Larsen.

GET ACQUAINTED WITH EMMAUS ORGANIZATION

Believing that it will be interesting for our members to know something about the personnel of our various organizations, the Messenger will, from time to time, list the persons who participate in these activities. This information, we think, will have a further value from a historical standpoint in the years to come.

The present membership of the choir is as follows: Mrs. Fred Simonsen, Mrs. Ethel Christensen, Miss Rosemarie Larsen, Mrs. Omar Junker, Mrs. A. V. Martin, Mrs. Carl Frederiksen, Miss Shirley Andersen, Miss Jeanne Kouski, Mrs. Alfred Sorensen, Mrs. Gertrude Miles, Mrs. Richard J. Nelson, Miss Janet Andersen, Miss Louise Bergman, Miss Alice Klingberg, Miss Delores Frederiksen, Mrs. Sigurd Petersen, Mr. Hans Jepsen, Mr. William Madsen, Mr. Roy Jensen, Mr. Thomas Larsen, Mr. John Martin, Mr. Omar Junker, Mr. Harry James directs the choir and Mr. Gordon Petersen serves as organist.

Serving in the Sunday School at the present time are Mrs. Harold Miller, Mrs. Oscar Scheel, Mrs. A. V. Martin, Mrs. Mark Petersen, Mrs. Chris Christensen, Mrs. Harold Quirk, Mrs. William Atkinson, Mrs. Fred Simonsen, Mrs. Earl Woodward, Mrs. C. Wahlen, Miss Olga Nelson, Miss Laura Sorensen, Miss Jeanne Kouski, Miss Rosemarie Larsen, Miss Janet Andersen, Mr. Harold Miller, Mr. Robert Woodward, Mr. William Madsen, Mr. Roy Jensen, Mr. LeRoy Andersen, Mr. Delbert Hansen and Mr. Victor Andersen. Mr. Harry Andersen is the superintendent.

The Bible Class staff includes Mr. Ernest Petersen, superintendent, Miss Alice Klingberg and Mr. Russell Petersen.

WANTED

News on every angle of Emmaus church activity is needed for the November issue of the Messenger. Every member can be a reporter. Just pass on your news to the editor — — and the Messenger will be a more interesting church newspaper. The November issue goes to press on or about October 18, so please get your items in prior to that date. We would especially like to hear from the organizations which thus far have not reported news.

EMMAUS NOTES



Among those recently visiting Emmaus were Mr. Albert Stange of Sheboygan, Mr. and Mrs. Palmer Larsen and Ruth Ann of Delavan, Mrs. Minnie Hofstrom and Norman of Clinton, and Mr. and Mrs. Herbert Christensen of Racine.

The Wisconsin District Convention at Neenah September 1 to 4, was attended by Mrs. Chris Jensen, Mrs. Dora Langenfeld, Mrs. Carl Klingenberg, Mr. Martinus Jepsen, Pastor Sigurd Petersen and Pastor E. R. Andersen.

Pastors Andersen and Petersen, Miss Nelson and Mrs. Jensen served as delegates to the convention, while Mrs. Klingberg, Mrs. Jensen Miss Nelson and Mrs. Langenfeld represented the Mission Society and the Ladies Aid as delegates to the W. M. S. meeting, September 3.

The convention voted a budget contribution of \$500 each to the Milwaukee and Washington Island churches for their building funds. An additional \$1000 was set aside from the district mission fund for each of these churches.

The Lutheran Welfare Society of Wisconsin informed the convention that the United Evangelical Lutheran Church, of which Emmaus is a member, had contributed more per member to the Lutheran Welfare Society in Wisconsin than any other church body.

The Choir is looking for new members. College, transfer of membership and departure from Racine have recently meant a loss to the choir of the fine and faithful services of Arnold Jacobsen, Rosemary and Doris Monefeldt, Elaine Hansen, Jerry Martin and Rhoda Johnson. New members in all voices will be welcomed — with special emphasis on a need for additional men's voices.

Resuming its activity after the summer, The Luther League met on August 28 at Shoop Park, combining with its meeting a farewell party for Elaine Hansen, Paul Andersen and George Demant prior to their departure for college. The League will continue its schedule of regular weekly meetings at 6:30 P. M. on Sundays.

Still on the Emmaus sick list is Mr. Morris Sorensen who is now at home after being hospitalized for two months. Gloria Krogh, a member of the senior confirmation class, is recovering from a major operation. Another confirmation class member, Dan Dalgaard, suffered a serious injury while vacationing in Illinois. Mrs. Camilla Petersen was painfully scalded in an accident in her home.

Mr. and Mrs. Nels Petersen celebrated the 55th anniversary of their marriage on September 19.

New members recently received into the Emmaus Congregation are Mr. Allen Kraemer, 1229 Highland Avenue; Mrs. Einer Paulsen, 4317 15th Street; and Mr. and Mrs. Henry Ostwald, Nancy Lee, Charla Mae and Judith Ann, Forest Street.

COMING EVENTS

Professor Paul Nyholm of Trinity Seminary, Blair, Nebraska, will be guest speaker at the Fall Mission Meetings to be held at Emmaus on Friday, September 30 and Sunday, October 2. Professor Nyholm will speak on the following topics: Friday, September 30 — — "Come and See"; Sunday Morning, October 2— — "I Say to You, Arise!" (Luke 7:11—17); Sunday Evening — — "How May We Bear Witness to Christ?" In addition to the meetings scheduled above, Professor Nyholm will also speak at the Danish service at the Old Peoples' Home on Sunday afternoon, October 2. Emmaus members are urged to support these meetings. You will find a blessing in them for yourself and for the friends you bring with you.

The Wisconsin District Luther League Convention will be held at Neenah, Wisconsin, November 4 to 6.

World-wide Communion Sunday will be observed on Sunday, October 2.

The Women's Missionary Society celebrates its twenty-fifth anniversary on Tuesday, October 11, with a banquet to be held at Our Savior's Church. Mrs. Gardner Clark is in charge of plans for the event, and Miss Olga Nelson will act as toastmistress.

FROM THE CHURCH RECORDS

Weddings:

William R. Paton and Carol J. Thompson were married August 27. They will make their home in Milwaukee where Mr. Paton will continue his education.

Richard J. Nelson and Dorothy E. Lorenzen were married September 3. Their address is 3202 Republic Avenue.

Baptisms:

Dave Alan Larsen, son of Harry and Evelyn Larsen, born March 27, 1949, baptized August 10. Sponsors: Arlene Eichstead and Lawrence Larsen.

Robbin Randall Petersen, son of Everett and Dona Petersen, born July 6, 1949, baptized August 8. Sponsors: Robert Marty and Ruth Rasmussen.

EMMAUS STATISTICS

Those of our members who are not familiar with the Synodical Yearbook will perhaps be interested in the statistics for Emmaus Church in the Church year ending June, 1949.

As of June, Emmaus had 965 baptized members, 658 confirmed members, 481 adult members and 371 communing members. In the preceding year the congregation gained 40 adult members, 21 of them by confirmation, and 30 children. There were losses of 4 members by death, 16 otherwise, and 4 children.

The record of ministerial acts for the year ending June, 1949, shows 27 baptisms, 21 confirmed, 18 weddings and 16 funerals. The total communion attendance was 1309.

The Sunday School enrollment was 228, with 110 in the Cradle Roll, and 39 in the Bible Classes. A total of 20 instructors served in the Sunday School and Bible Class work

Sec. 34.66 P.L.&R.
U. S. POSTAGE
PAID
Blair, Nebraska
Permit No. 18

OUR ADVERTISERS MAKE THIS PAPER POSSIBLE

Joe Bohn General Trucking

COAL and KINDLING WOOD

1001 Gideon Court

Pros. 5536

Dine at

HOTEL RACINE

Overlooking Lake Michigan

Moderate Priced Dining Room

Christiansen's Chapel, INC.

FUNERAL DIRECTORS

Serving Racine over Fifty-Five Years

ROY E. POULSEN

REAL ESTATE — MORTGAGE LOANS

All Forms of Insurance

1420 Washington Ave.

Pros. 7481

Houman's Fish Market

Fresh—Smoked—Salted Fish

1028 State St.

Jackson 2107

MERCHANTS DELIVERY

Moving and Storage Company

Insured Movers - - Bonded Warehouses

1215 State St.

Prospect 70

Creator of Styles in Fine Jewelry

CARL JACOBSEN

Jeweler

422 Main St.

Jackson 4088

Farmers' & Merchants' Bank

CHECKING AND SAVINGS ACCOUNTS

Service Consistent with Good Banking

Member of the Federal Deposit Ins. Corp.

1012 State Street

Thompson Gasoline Alleys, Inc.

"BETTER GAS FOR LESS"

Goodyear Tires - - Quality Fuel Oils

6th & Marquette - - 16th & Murray

Douglas & Yout - - - - 16th & Racine

Asdahl & Nelson, Inc.

BUILDING MATERIALS — PAINTS

1231 State Street

Jackson 561

SEE

Martin Christensen Company

If you need a Home, a Loan or Insurance

1412 Owen Ave.

Jackson 6670

HANSEN HEARING AID SERVICE

A. W. HANSEN

Arcade Building

Room 219

423 Main Street

Jackson 4953

The Microtone Company

Engildsen Bakery

Kringles and Danish Pastry

"Our Products Are Favorites"

1506 State St.

Jackson 4475

Racine Junction Building and Loan Association

Martin Christensen, Secretary

1603 Washington Avenue

Jackson 490

SAVINGS insured to \$5,000. PROFITABLE
HOME LOANS to BUY—BUILD—REFINANCE
Dividends paid or credited semi-annually.

Dorothy Beck Ott

Ralph Ott

SAY IT WITH FLOWERS

FROM

OTT FLOWER SHOP

620 State St.

Jackson 3366

Ericksen Drug Store

Myron Ericksen, R.Ph.

1100 State St.

Prospect 1223

Emmaus Messenger

From *EMMAUS LUTHERAN CHURCH*

Volume III

Racine, Wisconsin, November, 1949

Number 9

THE PASTOR'S MESSAGE

The times in which we live, and the demands which the concerted effort of evangelism makes, calls for a re-examination of our faith and Christian tenets. What have we to say to people? What is that which we firmly believe to be the truth and which the world should hear about from us?

We can say without hesitancy that sin is the cause of man's woe, socially and individually, but we can also say that God is gracious and willing to save. We can say that forgiveness of sin is a real experience that brings release from pent-up sin and guilt, and that it makes new men in a very real sense.

We can call out that there is a Savior, Jesus Christ, who gives real happiness, abiding peace and life eternal. We can assure our generation that there are spiritual resources in God that enable us victoriously to rise above illusions, defeats, sickness and death; that in all these trials the promises of God through Holy Scripture are adequate for our needs.

We may unhesitatingly affirm that within the Christian fellowship of the church and the Christian home we can live and rear our children with a sense of God's guidance and blessing always attending us. Most certainly we can assure our neighbor that life has a purpose which centers in Christ and finds its consummation in heaven.

These are things we can say. As we say them, we give our witness of our glorious Lord.

Personally, I shall try to bring this witness to you from the pulpit and in my private ministry. We have something tremendous in our Christian faith and witness. Let us hear it, believe it and tell it!

Recently it was my privilege to attend the banquet of the Women's Missionary Society held in connection with the observance of its twenty-fifth anniversary. My musing upon Pastor E. R. Anderson's message to the women that evening reassured me as to the significance of such an organization in a congregation. Several objectives can readily be listed. Foremost is increased knowledge of missions without which there can be no true interest. Equally significant is the opportunity it gives the women of our church to tie themselves to the great cause of world evangelism commanded by Christ. It is hoped that all of our women will rally to the work of this organization. It has possibilities which solicit sacrificial loyalty.

EVANGELISM PROGRAM GETS UNDER WAY

At the Sunday morning service, October 16, the lay visitors representing Emmaus in the Evangelism Program were commissioned to their work in the presence of the congregation.

This initial program of visitation, extending over a period of three weeks, is to be followed by further visits by more workers. In fact, it is planned to establish this procedure as a permanent mission on the part of Emmaus members. In other words, evangelization will be made a regular function of church life—as definitely planned and conducted as the Sunday School, the Mission Society or any other organization.

The Program of Evangelization, a joint undertaking by the eight bodies of the National Lutheran Council, must be geared to the needs of each local congregation. The needs of our church and our people have been carefully studied, and the lay visitors are doing their work accordingly.

More and definite attention must be given to all homes. It means that contact must be made with those who are regular in church attendance as well as with those who are unwilling or unable to attend. All our people must feel that they are remembered, that the

(Continued on page 2)

EMMAUS MISSION SOCIETY MARKS TWENTY-FIFTH ANNIVERSARY

Eighty-five Emmaus women attended a banquet at Our Saviour's Lutheran Church, October 11, in celebration of the twenty-fifth anniversary of the organization of the Emmaus Mission Society.

The principal speaker of the evening, appropriately enough, was Pastor E. R. Andersen who, with Mrs. Andersen, supplied the first impetus to the mission society movement in Emmaus, and to this end called the first meeting on January 18, 1924, to place before a small group of women a proposal for organization.

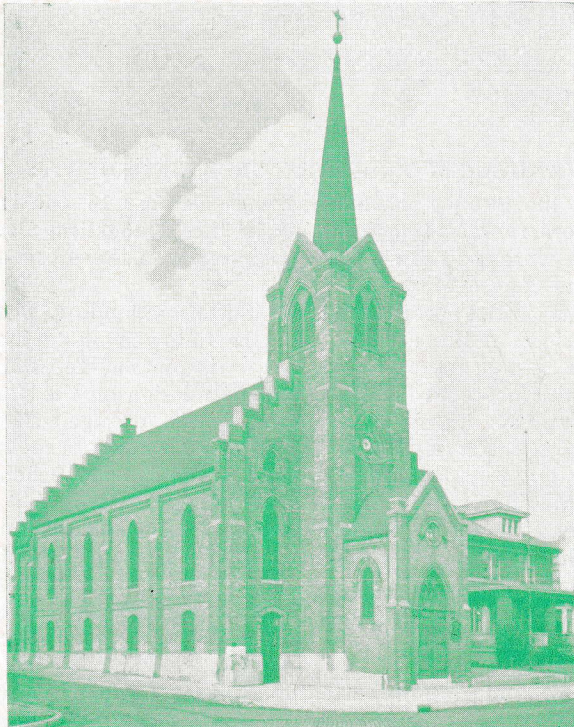
Pastor Andersen spoke of the past activity and usefulness of the society from its infancy, and then pointed to the future, to the challenge which awaits all missionary effort there and to Christ's missionary call to his disciples.

The Emmaus Mission Society, organized on that winter evening in 1924, was made up of 19 charter members: Mrs. E. R. Andersen and the Misses Roma Andersen, Julia Fredericksen, Ella Jensen, Carrie Johansen, Viola Knutsen, Nettie Lamp, Edith Lange, Ragna Lenestrand, Lydia Nelson, Florence Olsen, Emma Petersen, Ella Sorensen, Julia Sorensen, Laura Sorensen,

(Continued on page 2)

Emmaus Messenger

Published Monthly by the



EMMAUS LUTHERAN CHURCH

1134 Mound Avenue Racine, Wisconsin

SIGURD D. PETERSEN, Pastor

Phone: Jackson 1110 1130 Mound Avenue

Publication Committee: Henry Lund, Ernest Petersen, George Hansen

Editor: Byron Langenfeld

Lutheran Publishing House

SUNDAY SERVICES

Sunday School and Bible Classes.....9:00 a.m.

Morning Worship.....10:10 a.m.

OTHER MEETINGS

Luther League.....Each Sunday 6:30 p.m.

Church Choir.....Each Thursday 8:00 p.m.

Church Council.....First Tuesday 7:45 p.m.

Benevolent Society.....Second Monday 8:00 p.m.

Missionary Society.....Second Tuesday 8:00 p.m.

Danish Ladies Aid.....Second Wednesday 2:00 p.m.

Fellowship Group.....Second Wednesday 8:00 p.m.

Sunday School Teachers.....Third Tuesday 8:00 p.m.

Ladies' Aid.....Third Wednesday 2:00 p.m.

Brotherhood.....Last Tuesday 8:00 p.m.

Cradle Roll Workers.....Quarterly 8:00 p.m.

Confirmation Classes.....Saturday 9:00 and 10:30 a.m.

EVANGELISM PROGRAM GETS UNDER WAY

(Continued from page 1)

church as a whole is vitally interested in their spiritual welfare. Friendly assistance and spiritual guidance should be available to all at all times.

The objective is also to make contact with every home which has had a connection with the church through the Sunday School or Cradle Roll. Where the members of such families are not members of the church, an effort is being made to unite them with the church and to help them become active in its work. z

Finally, there are many people without any church connection. These must be sought and found. Essentially, the overall objective of the Evangelism Program is to awaken the whole membership of the church to a keener consciousness of life in Christ, to evoke a deeper consecration to Him and His Church.

EMMAUS MISSION SOCIETY MARKS TWENTY-FIFTH ANNIVERSARY

(Continued from page 1)

Marie Sorensen, Margaret Stone, Emma Thompsen and Laura Thompsen.

The first officers of the group were: Miss Laura Sorensen, president; Miss Emma Petersen, secretary; and Miss Julia Fredericksen, treasurer.

At the second meeting of the Emmaus Mission Society, twelve new members were added, and the society has since flourished as one of the most active and efficient organizations in the church.

Four members of the original group have since passed away. All were diligent and whole-hearted in the cause of missions, and all have been sorely missed in the activities of the Mission Society as well as those of the church at large. Miss Carrie Johansen died a number of years ago. Mrs. E. R. Andersen passed away in May, 1941. Miss Laura Thompsen, who later became the wife of Pastor N. P. Sorensen, died in June, 1943. Miss Margaret Stone passed away in January, 1944.

The original purpose of the Mission Society was to lend its support exclusively to the cause of foreign missions. As the years went by, its activity was extended to other functions: assistance to the Lutheran Welfare work, contributions for the purchase of hymn books and ear phones for the church, the supplying of altar flowers, and so forth.

The Mission Society has been constantly active since its founding and has maintained a large and effective membership. Serving as presidents over the twenty-five-year period have been the following:

Mrs. Chris Christensen	Mrs. Roma Martin
Mrs. Lavina Davidsen	Miss Olga A. Nelson
Miss Ella Jensen	Miss Emma Petersen
Miss Alice Klingberg	Miss Laura Sorensen
Mrs. Carl Klingberg	Mrs. Hannah Sundsted
Miss Marie Thompsen	

As the Emmaus Mission Society looks forward to the second quarter-century of its activity, it plans, with the help of God, to carry out a wider and greater work for the furtherance of His Kingdom, both within Emmaus and throughout the world.

EMMAUS NOTES



The Annual Every-Member Canvass in Emmaus has been scheduled for Sunday, November 20. As has been the practice in recent years, the members' envelopes will be available in the church parlors after the morning service for those who wish to make their pledges at that time. In the afternoon the deacons and their helpers will visit the homes and leave the envelopes of those not in attendance at the morning service.

Through the assistance of the **English Ladies' Aid** the two candleholders and the crucifix on the altar have been replaced.

This Year's Mass Reformation Service will be held in Memorial Hall, Sunday, October 30, at 3:30 P.M. Dr. P. O. Bersell, president of the Augustana Lutheran Church, will be the speaker at this festive occasion. The Emmaus choir will join with those of the other Lutheran churches to provide the music.

Mrs. Esther Gething, after a long illness, passed away at Sunny Rest Sanatorium on October 14.

World-Wide Communion Sunday, October 2, was marked in Emmaus by the attendance of about 150 communicants at the Lord's Table.

A Reminder—Brotherhood meeting, Tuesday, November 29. Election of officers and program.

Report on our sick; Mr. Lawrence Larsen has been seriously ill at St. Mary's Hospital with pneumonia and complications. Mrs. Camilla Petersen is recovering nicely from her severe burn of some weeks ago. Dan Dalgard is at home but inactive. Miss Jean Larsen is making favorable progress at Sunny Rest.

The Ladies Aids Feted Mr. and Mrs. Fred Petersen in the church parlors on October 9 in celebration of the fiftieth anniversary of their marriage.

Pastor L. C. Gjerde, executive director of the Wisconsin Lutheran Welfare Society, has been secured as guest speaker for the Wisconsin District Luther League Convention to be held at Neenah, November 4-6.

Recent Baptisms in Emmaus. John Carl Thomsen, son of Peter and Lucille Thomsen, born July 19, 1949, baptized September 25. Sponsors: Alice Klingberg and Olaw Thomsen. Peter Carl Bushman, son of Peter and Carla Bushman, born November 9, 1947, baptized October 1, 1949. Sponsors: Mr. and Mrs. John Pridemere. Gary Lee Bushman, son of Peter and Carla Bushman, born December 10, 1948, baptized October 1, 1949. Sponsors: Mr. and Mrs. John Pridemere.

The Rummage Sale, sponsored by both Ladies' Aids, is scheduled for November 3. It will be appreciated if all members of the church will bring their articles to the church basement prior to this sale.

Adult Instruction Class will begin November 2 at 7:30 p.m.

Miss Elaine Hansen, former editor of the Messenger, is continuing her journalistic work as reporter on the Hermes, Dana College newspaper.

We welcome Jerry Martin back into our midst after a three months' absence during which he worked in Yellowstone National Park.

Election of officers will be held by the English Ladies' Aid at its November meeting.

For those of you who may not be familiar with our ushering staff, the following are the men who serve us every Sunday: Ernest Petersen, Rocco Farina, Russell Petersen, Oscar Scheel, LeRoy Kasprovich and Gerald Martin.

ONE THOUSAND MEMBERS—

Emmaus has about 1000 baptized members—a group equal in size to a small community. Much happens in these lives, both individually and as participants in the various activities of Emmaus, that has interest for all of our members.

The **EMMAUS MESSENGER** can be a clearing house for all such news, to help us keep abreast of affairs in our church community, to help us know one another better, to promote greater interest in all aspects of the work of the Kingdom of God.

We need news—more news than we have had in the past—if the **MESSENGER** is truly to fulfill its mission. Can we count on you?

May God use our Lutheran Church in these difficult days as a mighty instrument, and the pastors may realize that a peculiar responsibility rests upon them, that is, of inspiring, training and directing the evangelistic body. We are thus brought face to face with the truth which has been so disastrously obscured in recent years, both in the thought and practice of the Church. It is that: the ministry of evangelism is a charge laid upon the whole Church by its Lord. It is the very essence of the Christian calling. A Church which ceases to be missionary will not be, and cannot rightly expect to be, spiritual.

—Pastor W. E. Wallner.



Sec. 34.66 P.L.&R.
U. S. POSTAGE
PAID
Blair, Nebraska
Permit No. 18

OUR ADVERTISERS MAKE THIS PAPER POSSIBLE

Joe Bohn General Trucking

COAL and KINDLING WOOD

1001 Gideon Court

Pros. 5536

Dine at

HOTEL RACINE

Overlooking Lake Michigan

Moderate Priced Dining Room

Christiansen's Chapel, INC.

FUNERAL DIRECTORS

Serving Racine over Fifty-Five Years

ROY E. POULSEN

REAL ESTATE — MORTGAGE LOANS

All Forms of Insurance

1420 Washington Ave.

Pros. 7481

Houman's Fish Market

Fresh—Smoked—Salted Fish

1028 State St.

Jackson 2107

MERCHANTS DELIVERY

Moving and Storage Company

Insured Movers - - Bonded Warehouses

1215 State St.

Prospect 70

Creator of Styles in Fine Jewelry

CARL JACOBSEN

Jeweler

422 Main St.

Jackson 4088

Farmers' & Merchants' Bank

CHECKING AND SAVINGS ACCOUNTS

Service Consistent with Good Banking

Member of the Federal Deposit Ins. Corp.

1012 State Street

Thompson Gasoline Alleys, Inc.

"BETTER GAS FOR LESS"

Goodyear Tires - - Quality Fuel Oils

6th & Marquette - - 16th & Murray

Douglas & Yout - - - - - 16th & Racine

Asdahl & Nelson, Inc.

BUILDING MATERIALS — PAINTS

1231 State Street

Jackson 561

SEE

Martin Christensen Company

If you need a Home, a Loan or Insurance

1412 Owen Ave.

Jackson 6670

HANSEN HEARING AID SERVICE

A. W. HANSEN

Arcade Building

Room 219

423 Main Street

Jackson 4953

The Microtone Company

Engildsen Bakery

Kringles and Danish Pastry

"Our Products Are Favorites"

1506 State St.

Jackson 4475

Racine Junction Building and Loan Association

Martin Christensen, Secretary

1603 Washington Avenue

Jackson 490

SAVINGS insured to \$5,000. PROFITABLE
HOME LOANS to BUY—BUILD—REFINANCE
Dividends paid or credited semi-annually.

Dorothy Beck Ott

Ralph Ott

SAY IT WITH FLOWERS

FROM

OTT FLOWER SHOP

620 State St.

Jackson 3366

Ericksen Drug Store

Myron Ericksen, R.Ph.

1100 State St.

Prospect 1223

Emmaus Messenger

From EMMAUS LUTHERAN CHURCH

Volume III

Racine, Wisconsin, December, 1949

Number 10

COUNCIL PROPOSES CONSIDERATION OF BUILDING SITE FOR EMMAUS

At the November meeting of the Council, the following motion was adopted as the first step in considering the relocation of Emmaus Church:

That Emmaus Evangelical Lutheran Church apply to the Regional Committee of the National Lutheran Council (under Division of American Missions, 327 LaSalle Street, Chicago, Illinois; Executive Secretary, Rev. H. Conrad Hoyer) for allocation of territory in, or about, the city of Racine for a possible future building site, the same to be placed on the agenda for the annual congregational meeting in December, and its passage recommended by the Council.

It was further suggested that the Council seek permission from the congregation to purchase lots for such a building site.

These important questions will be placed before the congregation at its annual business meeting on Monday evening, December 5.

PROSPECTIVE EMMAUS MEMBERS TAKE CONFIRMATION INSTRUCTION

Regular weekly classes in confirmation instruction are now being held for ten adults who will be accepted into membership with Emmaus on Sunday, New Year's Day.

The members of the class are: Mrs. Jennie Johnson, Miss Eleanor Kospecky, Mr. and Mrs. Albert Monday, Mr. Joseph Bohn, Mr. Robert Hess, Mr. Joseph Horvath, Mr. William Hunter, Mr. Oscar Johnson and Mr. Ralph Rayner.

WOMEN'S SOCIETIES ELECT OFFICERS

At its meeting of November 16, the English Ladies' Aid elected the following officers to serve during 1950:

President—Mrs. William Christensen

Vice-President—Mrs. Sigurd D. Petersen

Treasurer—Mrs. Reuben Andersen

Mrs. Fred Simonsen continues as Secretary of the society.

The Women's Mission Society, meeting on November 8, named the following officers for 1950:

President—Mrs. Earl Woodward

Secretary—Mrs. Alfred Sorensen

Holdover officers are Vice-President Mrs. Earl Fredriksen and Treasurer Mrs. Gardner Clark.

A SEASON'S GREETING

It is with lively anticipation that we look forward to our first Christmas with you people of Emmaus. We want to share with you the Christmas joy of all believers. It will be good to worship the Christ child with you and to stand in your midst and say, "A Savior is born." We wish you a blessed Advent and Christmas season in church and home.

—The Petersens.

LAY VISITORS REPORT GOOD PROGRESS IN EVANGELIZATION PROGRAM

Over the past several weeks about thirty Emmaus members have been active in the visitation service of the Evangelism Program.

Thus far, more than one hundred visits have been made, and the visitors report that they have been very well received by the members on whom they have called. The results have been most encouraging, and plans for the continuance of the program will be made at the next meeting of the lay visitors, Monday evening, December 12.

The committee wishes to remind the congregation that all members can contribute to the program by calling informally on various member families in the spirit of the Evangelism Program. It has already been proven that oftentimes a casual visit and a friendly invitation is all that is required to bring irregular members actively into the life of the church.

EMMAUS LUTHER LEAGUERS ATTEND DISTRICT CONVENTION

Six Emmaus Luther Leaguers were among the 24 young people who journeyed from Racine to the 34th District Luther League Convention at Neenah, November 4-6. Those representing Emmaus were Kermit Jorgensen, John Martin, James Woodward, Dolores Fredriksen, Joan Lund and Alice Klingberg.

The convention theme, "Let God Speak," was emphasized throughout the meetings and was climaxed in the banquet address, "God Speaks to Me of His Message of His Love," by Pastor L. C. Gjerde, executive director of the Wisconsin Lutheran Welfare Society.

Included in the business of the convention were the following decisions: 1. The Workshop will not be com-

(Continued on page 3)

Emmaus Messenger

Published Monthly by the



EMMAUS LUTHERAN CHURCH

1134 Mound Avenue Racine, Wisconsin

SIGURD D. PETERSEN, Pastor

Phone: Jackson 1110 1130 Mound Avenue

Publication Committee: Henry Lund, Ernest Petersen, George Hansen

Editor: Byron Langenfeld

Lutheran Publishing House

SUNDAY SERVICES

Sunday School and Bible Classes.....9:00 a.m.
Morning Worship.....10:10 a.m.

OTHER MEETINGS

Luther League.....Each Sunday 6:30 p.m.
Church Choir.....Each Thursday 8:00 p.m.
Church Council.....First Tuesday 7:45 p.m.
Benevolent Society.....Second Monday 8:00 p.m.
Missionary Society.....Second Tuesday 8:00 p.m.
Danish Ladies Aid.....Second Wednesday 2:00 p.m.
Fellowship Group.....As announced
Sunday School Teachers.....Third Tuesday 8:00 p.m.
Cradle Roll Workers.....As announced
Brotherhood.....Last Tuesday 8:00 p.m.
Ladies' Aid.....Third Wednesday 2:30 p.m.
Confirmation Classes.....Saturday 9:00 and 10:30 a.m.

THE PASTOR'S MESSAGE

There has recently appeared a new translation of the New Testament Epistles under the title, "Letters to Young Churches." The translator, J. B. Phillips, has done an excellent job. He has succeeded in making the meaning of the Epistles vibrate with life. It thrills my soul to read it. I wish for all this same invigorating experience with these New Testament Scriptures.

I Timothy 4:7b-8 is translated, "Take time and trouble to keep yourself spiritually fit. Bodily fitness has a certain value, but spiritual fitness is essential both for this present life and for the life to come." Naturally, as your pastor, I am deeply concerned about the spiritual fitness of all of you. It is my job to contribute whatever lies within my possibilities to your spiritual fitness. In a broader sense, the primary mission of the church, with all its functions and members, is the same.

We should be able to grasp the significance of spiritual fitness "for the life to come." To be fit for eternal life with God should appeal to us, and we are fit for eternal life when our souls embrace Christ Jesus in personal faith and love. Then we are redeemed from sin, death and the devil, and we live under God in His kingdom forever. Salvation is by God's grace, certainly, but only in accordance with our wish.

Spiritual fitness "for this present life" does not arouse our imaginations quite so readily. That is because we fail to see the connection between a life that is saved for heaven and a life that is lived to the greatest spiritual possibilities here on earth. I said in a sermon recently that parents must be so spiritually equipped that they can convey the grace of God to the needs of their children. What do we parents have to say to our children when sin enters their lives? Can we speak to them the Word of God which forgives and cleanses? Or do we just punish them and leave their consciences stained with guilt? We are very certainly spiritually unfit if we are unable to sustain our youth in vital faith in Christ.

It is possible for people to go for years without any sense of spiritual need. Perhaps ignorance of spiritual realities is a genuine symptom of spiritual deficiency. Crises in life do come, nevertheless—in personal living, in the home, in great choices, in death. Indeed, there is not a day in which there are not spiritual demands upon us. If our spiritual fitness does not measure up to our temptations and trials, we are victims, not victors. It is possible through God's grace to turn every situation into triumph, even death, and thus live to the glory of God, fit for this present life.

We can be sure that it will take time and trouble to keep ourselves spiritually fit. Most certainly! It takes time to hear God's Word, to master the Scriptures through personal application, to pray to God, to partake of the Lord's Supper, to think about God's will in our lives. There is no escape from this "time and trouble," but I can give you this assurance—it pays to be spiritually fit. God will not let you down.

EMMAUS NOTES



The Financial Secretary has announced that the church books will be kept open until January 8, 1950, and that 1949 contributions can be made up to and including that date.

Beginning January 4, Pastor Petersen will conduct weekly lectures on the Book of Romans. The nature of these lectures will be both inspirational and educational. Some who have difficulty in attending Sunday morning services have expressed their wish for such an evening service. The time: Wednesdays at 7:45 P.M.

The Women's Mission Society has decided to sponsor the spring meeting of the Southern Circuit of the Wisconsin District Women's Mission Society.

Six new members were welcomed into the English Ladies' Aid at its November meeting.

The Church Council again this year has requested the Women's Mission Society to obtain contributions for Lutheran World Action. Contribution envelopes and information have been mailed to every home with the request that contributions be brought to church either December 4 or 11, or mailed directly to the church. Used clothing for Lutheran World Relief is also very much needed.

Recent Emmaus weddings: Warren P. Schultz and Caroline M. Jensen, November 5. Robert Woodward and Shirley Nielsen, November 19. Leonard Larsen and Isabelle Petersen, November 24. George Musack and Ruth Andersen, November 24.

Among our sick. Mr. P. C. Petersen, 1530 Isabelle Avenue, Mr. William Atkinson, 1230 Forest Street and Mrs. Chris Stougaard, 1229 Kingston Avenue, have returned home after surgical treatment at St. Mary's Hospital. Mr. George Knudsen, 2404 Olive Street, is seriously ill at St. Luke's. Mrs. Hans Christensen has been ill.

Baptized on November 5 was Judy Ann Hess, born June 20, 1948, daughter of Robert and Ann Hess. Sponsors: Mr. and Mrs. Alvin Hess.

The funeral of Mr. Isadore LaFave was held on November 17. Mr. LaFave died suddenly on November 14.

We regret having failed to note in our last issue the death of Mr. Jens P. Petersen. Mr. Petersen, though residing in Minocqua, Wisconsin, retained his membership in Emmaus Church. He passed away on October 4, and his funeral was held in Racine on October 8, with Pastor E. R. Andersen conducting the service.

Sunday, December 11, has been designated as Universal Bible Sunday, to call our attention anew to "the Book to Live By" and its continuous ministry to hu-

manity. The Church Council has authorized an offering for that Sunday to be given to the American Bible Society.

At its November meeting the English Ladies' Aid remembered the various missions and children's homes with Christmas gifts of money.

COMING EVENTS

Among the events scheduled at Emmaus for the near future are the following:

- Dec. 5—Annual Congregational Business Meeting
- Dec. 7—Danish Ladies Aid
- Dec. 10 (Afternoon)—Cradle Roll Christmas Party
- Dec. 12—Meeting of Evangelism Program lay visitors
- Dec. 14—Ladies Aid Christmas Party—with English Aid entertaining Danish Aid
- Dec. 18—Sunday School Christmas Tree Program—Treats for the children. Everyone invited

SOMETHING TO THINK ABOUT

Most of you have undoubtedly read the editorial in the November 14 issue of the Ansgar Lutheran on the subject of merging the various Lutheran synods.

We are reading and hearing more and more on this subject. Most thoughtful Lutherans will agree that there is much to be gained in such a union. At the moment, a merger uniting our own United Evangelical Lutheran Church (44,300 baptized members), the American Lutheran Church (689,227 baptized members) and the Evangelical Lutheran Church (772,163 baptized members) is a subject of discussion. This move is distinctly possible, and it should be a matter of thought and prayer and discussion among our people.

If you have not read the article in the Ansgar Lutheran, we urge you to do so. In our country we have 17 Lutheran synods numbering a total of almost six million members. This represents a great potential force for the cause of Christ. It would be a serious mistake for Lutherans to miss the opportunities which might be theirs in uniting their efforts.

LUTHER LEAGUE DISTRICT CONVENTION

(Continued from page 1)

binced with the Bible Camp. 2. The Luther League newspaper will be improved by the addition of more news and the use of better print. 3. Only one circuit rally a year is to be scheduled, but consideration will be given to the addition of a weekend retreat annually. 4. The Luther League will lend its support to the Evangelism Program. 5. League memberships will be checked.

Pastor Lyle Paulsen, Washington Island, was elected Vice-President for the District, and Ann Justesen, also of Washington Island, was named Secretary.

Sec. 34.66 P.L.&R.
U. S. POSTAGE
PAID
Blair, Nebraska
Permit No. 18

OUR ADVERTISERS MAKE THIS PAPER POSSIBLE

Joe Bohn General Trucking

COAL and KINDLING WOOD

1001 Gideon Court

Dial 4-1481

Dine at
HOTEL RACINE

Overlooking Lake Michigan

Moderate Priced Dining Room

Christiansen's Chapel, INC.

FUNERAL DIRECTORS

Serving Racine over Fifty-Five Years

ROY E. POULSEN

REAL ESTATE — MORTGAGE LOANS

All Forms of Insurance

1420 Washington Ave.

Dial 2-5907

Houman's Fish Market

Fresh—Smoked—Salted Fish

1028 State St.

Dial 3-2477

MERCHANTS DELIVERY

Moving and Storage Company

Insured Movers - - - Bonded Warehouses

1215 State St.

Dial 2-5103

Creator of Styles in Fine Jewelry

CARL JACOBSEN

Jeweler

422 Main St.

Dial 3-4341

Farmers' & Merchants' Bank

CHECKING AND SAVINGS ACCOUNTS

Service Consistent with Good Banking

Member of the Federal Deposit Ins. Corp.

1012 State Street

Thompson Gasoline Alleys, Inc.

"BETTER GAS FOR LESS"

Goodyear Tires - - Quality Fuel Oils

6th & Marquette - - 16th & Murray

Douglas & Yout - - - - 16th & Racine

Asdahl & Nelson, Inc.

BUILDING MATERIALS — PAINTS

1231 State Street

Dial 3-2461

SEE

Martin Christensen Company

If you need a Home, a Loan or Insurance

1412 Owen Ave.

Dial 3-0448

HANSEN HEARING AID SERVICE

A. W. HANSEN

Arcade Building

Room 219

423 Main Street

Dial 3-8480

The Microtone Company

Engildsen Bakery

Kringles and Danish Pastry

"Our Products Are Favorites"

1506 State St.

Dial 3-1246

Racine Junction Building and Loan Association

Martin Christensen, Secretary

1603 Washington Avenue

Dial 3-4223

SAVINGS insured to \$5,000. PROFITABLE
HOME LOANS to BUY—BUILD—REFINANCE
Dividends paid or credited semi-annually.

Dorothy Beck Ott

Ralph Ott

SAY IT WITH FLOWERS

FROM

OTT FLOWER SHOP

620 State St.

Dial 2-6281

Ericksen Drug Store

Myron Ericksen, R.Ph.

1100 State St.

Dial 2-3091