

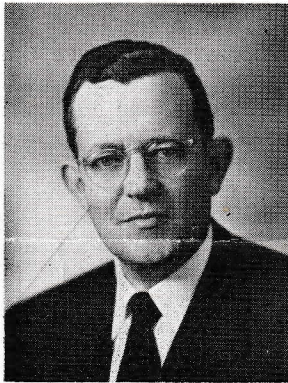
Emmaus Messenger

From EMMAUS LUTHERAN CHURCH

Volume IX

Racine, Wisconsin, January, 1955

Number 1



Our Guest
Speaker



Our New
Pastor

Pastor Verner Carlsen, will be with us during the week of Special Evangelism Emphasis, Jan. 23-30. Pastor Carlsen is from Our Savior's Lutheran Church of Council Bluffs, Iowa. He has served congregations at Graettinger, Iowa and Kenmare, N.D. After serving Graettinger he was a chaplain in the U.S. Navy and after serving Kenmare where a new church was built during his pastorate Pastor Carlsen volunteered and served as a Marine chaplain in Korea.

In his former parishes as well as at Council Bluffs he has met with wonderful success in developing a permanent Lay Evangelism Program. We urge you to come and bring others to these special services and get some of the answers to the questions, "How do you make such visits?" . . . "What do you say?" . . . "Why not just leave this whole job to the pastor?"

Remember:

Sunday, Jan. 23rd

Sunday School—Evangelism Service at 9 A.M.

Combined Special Service—Pastor Verner Carlsen, speaker at 10:15 A.M.

EVANGELISM—Our part in the P-T-R outlined in capsule form:

I Preparation

1. Pray—In private, in organizational meetings, in worship services.
2. Help to compile a "Responsibility List" (persons who might be helped by a visit and reminded that our church cares) by giving names and addresses to your pastor, a Sunday school teacher, or a Church Council member.
3. Plan to attend P-T-R Rally Meetings in our Church

The Schedule:

Sunday, Jan. 23

Dear Members and Friends of Emmaus:

As pastor and family having now come to work with you in the great endeavor of the Kingdom of God, we very sincerely express our appreciation for the cordial reception we have experienced in your midst. We sense that along with your welcome you also radiate a deep spirit of prayerful anticipation. We join you in praying that God may richly bless our ministry among you. Remember that you are all welcome to visit with us at the parsonage.

Pastor Thorvald Hansen

Sunday School Evangelism Service at 9 A.M.
Combined Evangelism Service at 10:15 A.M.

(Note time of these special services)

Sunday Afternoon School of Evangelism and Rally, in Milwaukee Auditorium at 3 P.M. for all church workers and leaders.

Sunday Evening at 8—Informal Visitors' Instruction, Jan. 24 — Tues., Jan. 25 — Wed., Jan. 26 on Prayer — Worship — Instruction — Fellowship Service at 8 P.M.

Thurs., Jan. 27 — Fri., Jan. 28 — Sat., Jan. 29 Lutheran Evangelism Conference Mass Meetings in the Milwaukee Arena at 8 P.M.

On Sunday Afternoon at 3:30.

Information on transportation to Rally Meetings will be published in the local newspaper.

Saturday, Jan. 29, will be Youth Day at the Conference. We hope many of our young people will seek opportunity to attend.

The leaders of this Evangelism Rally are counting very strongly on help from Racine to fill the 13,000 seat arena but even more God is counting on you and me to help fill His mansions of Eternal Glory.

Emmaus Messenger

Published Monthly by the
EMMAUS LUTHERAN CHURCH
THORVALD HANSEN, Pastor

1134 Mound Avenue Racine, Wisconsin

Publication Committee: Harry Andersen, Milton Burdick.

SUNDAY SERVICES

Family Church and School.....9:00 A.M.
Worship Service10:30 A.M.
Youth Fellowship Last Sunday 7:00 P.M.

OTHER MEETINGS

Church Choir Each Thursday 7:30 P.M.
Church Council Second Monday 8:00 P.M.
Circle Meetings First Wednesday
Mission Society Second Tuesday 8:00 P.M.
Brotherhood Third Tuesday 8:00 P.M.
Ladies Aid Third Wednesday 2:30 P.M.
Sunday School TeachersFourth Tuesday 8:00 P.M.
Confirmation Classes Saturday 9:00 & 10:00 A.M.
Ushers Club As announced
Cradle Roll Workers As announced

WHAT IS THE P-T-R MISSION PROGRAM?

"P-T-R" means Preaching, Teaching and Reaching. It is not just an announcement; or a series of sermons, or someone pushing a door bell, or turning on the lights in our church during a week night or two for a change! It's all of that and a lot more! As the days of Our P-T-R action approach we are anxious that with the limited time our people of Emmaus Congregation have had to prepare and understand this venture that you may prove to be an eager group capable of recognizing a great challenge and determined to do a good job in measuring up to it. The purpose of the Week of Evangelism Jan. 23-30 is to deepen our spiritual life and to reach with the gospel of Christ those who have not responded to Him. Pray that God's will be done in you and through you to that end.

SPECIAL NOTICE

Congregational meeting January 31, 1955,
7:45 P.M. in the Church Parlors. Everyone's
help is needed to decide on Building your
New Parsonage.

LINCOLN LUTHERAN HOME

No doubt, most of you people have read in the local newspaper, publicity about the new Lincoln Lutheran Home that is soon to be opened. This home is the former City Hospital for Contagious Diseases and is located on Prospect Street. This project, incidentally,

was conceived and started by the Lutheran Men of America of Racine. The Home is now owned and operated by a corporation formed by members of Lutheran Churches, who are members of the National Lutheran Council Churches of Racine County. There are 16 churches in this group and they will all have voting representatives in the corporation.

A superintendent for the home has, already, been secured and all that remains for its operation, is the completion of the necessary renovations.

This will be a Christian home for the aged and, it is expected, that preference will be given to members of the National Lutheran Council of Churches. However, if vacancies are available, the home will reserve the right to accept any other worthy case in Racine County.

As you can readily appreciate, considerable money is required for the necessary repairs, improvements and equipment. Also, the operating expenses of the Home will have to be covered for a period until the home becomes self sustaining. A campaign will soon be started, through which it is expected that sufficient money will be raised to cover the financial needs of the home. Emmaus is a part of this group and, as in the past, Emmaus will do its share for such a worthy cause.

Care for the Aged is a truly Christian responsibility. Remember the home with your prayers, personal gifts, memorial gifts, etc.

EMMAUS NOTES

INSTALLATION SERVICE

Rev. Adolph Petersen installed Pastor Thorvald Hansen on January 9th.

A Fireside hour followed the service and Rev. and Mrs. Hansen and guests of Emmaus were made welcome by the congregation. The Circle Women prepared coffee and cake together with sandwiches. A get-acquainted hour was held after the group was served. It was a wonderful fellowship.

MISSION SOCIETY CHRISTMAS PARTY

Mrs. Carl Klingberg opened the meeting with Scripture and Prayer. Mrs. Marie Lange welcomed guests and introduced the group who presented a program of wonderful music. It included songs from many lands about Christmas. Miss Viola Albrecht narrated the "Christmas in Many Lands." Some of the countries were Denmark, Italy, Estonia, Germany and France. Also a Negro spiritual depicting the little Baby Jesus. Soloists were Mrs. Ross Kjelstrup, Mr. and Mrs. Jerome A. Dawson and Miss Eva Tamulenas. Accompanist was Mrs. Dawson who wrote and compiled "Christmas in Many Lands."

After the program, a delightful Social Hour was enjoyed. Hostesses were Mrs. Julitta Scheel and Mrs. Francis Woodward.

LADIES AID CHRISTMAS PARTY

The Emmaus English Ladies Aid held their annual Christmas party on December 15, 43 ladies present.

The program opened with a Christmas hymn. Then Fran Woodward read scripture and offered prayer. Mrs. Harold Holm then sang, accompanied by Julitta Scheel—"O Holy Night."

The President, Mrs. Hattie Olson, welcomed the group. The program chairman, Mrs. Florence Lund, introduced Pastor LeRoy Anderson from Pewaukee, who brought the Christmas Story to the ladies. He expressed his happiness in being there.

Mrs. Holm then sang a Danish hymn. Mrs. Art Olsen then played for the group singspiration. The program ended with the Lord's Prayer.

Coffee, Christmas cookies, Yulecage were enjoyed. Mrs. Victor Anderson, Mrs. Oscar Scheel, Julia Durand, Mrs. Martin Christensen and Mrs. Earl Woodward served.

Many of the older women were present through the efforts of Mrs. Roma Martin, Mrs. Jean Simonsen and Mrs. Julia Durand, who provided transportation to and from the church.

The **EMMAUS MISSION SOCIETY** held its January meeting. The society was happy to welcome Pastor Hansen and his wife.

The 31st Birthday of the Society will be on January 18th. Miss Edith Lange recalled to the group how it was first established by Rev. E. R. Andersen and his wife in their home.

A group of musical selections were given by Miss Joyce DeMant and Mrs. Betty Layton.

Miss Lange was elected president for the coming year.

A Social Hour followed and the Society got acquainted with Pastor and Mrs. Hansen.

Miss Florence Olson, Emma Petersen and Mrs. Vicky Vogel were the hostesses.

DEATHS: Otto J. Krogh, age 71 years, passed away January 12th.

ITEMS OF INTEREST

Wagner College Choir coming to Atonement Church February 4th sponsored by Lutheran Men of America. Tickets: Adults \$1.00; Students 50 cents.

Ticket Chairmen: Al Beck and Peter Thomsen.

Father and Son Banquet

Pastor Siersbeck will be the speaker. Reserve February 22 for this event. Extra Sons will be available for men who need them.

Annual Synodical Convention

THIS YEAR AT LYNWOOD, CALIFORNIA; ST. PAUL'S LUTHERAN CHURCH, INVITES YOU TO ATTEND FROM JUNE 21st to 25th.

THE NEW CHURCH

Let's take a tour—First of all, we take a walk on the outside starting in the alley. Here are two large

1000 gallon Butane tanks to furnish temporary heat during construction and until we can get natural gas, which we hope will be available for next winter.

As we look up at the building, we see scaffolds covered with canvas to protect the working men laying stone during the cold weather. Also, puffs of smoke from their stoves that keep the mortar from freezing until it has been laid. Here and there a window frame is in place but only a few have the glass panes, as yet.

On the north side of the building, we see the start of the huge white bedford stone cross that will be in-laid in the Tennessee stone.

Shop and Save

FOOD MARKET

1404 DOUGLAS AVE.

1502 STATE ST.

MERCHANTS DELIVERY

Moving and Storage Company

Rent A Truck

Drive It Yourself

1215 State St.

Dial 2-5103

Farmers' & Merchants' Bank

CHECKING AND SAVINGS ACCOUNTS

Service Consistent with Good Banking

Member of the Federal Deposit Ins. Corp.

1012 State Street

Joe Bohn Coal Co.

COAL AND WOOD

1001 Gideon Court

Dial 4-1481

Christiansen's Chapel,

INC.

FUNERAL DIRECTORS

Serving Racine over Fifty-Five Years

PROGRESSIVE DAIRY

1214 Lathrop Ave.

Quality Dairy Products

Since 1912

— Dial 4-3301 —

EMMAUS MESSENGER

H. F. Andersen
1331 18th Street
Racine, Wisconsin

SCHULTZ MILTON
1016 LIBERTY ST
RACINE WIS

Sec. 34.65 (e) P.L.&R
U. S. POSTAGE
PAID
Blair, Nebraska
Permit No. 18

Form 3547 Requested

Now walking toward the main entrance, we note they are almost ready to erect the steel tower that has been lying in the front yard. As we get ready to enter the building, we clean off our muddy shoes, this is one of the mild winter days that has been so helpful in keeping the project going.

Inside we walk into the parlor in the wing. A huge canvas covers the opening for the large picture window. The fireplace in this room has been started and only waits for a rainy day when stone work can not go on outside, to be completed.

Now as we enter the narthex, we can see the church office has been started, the plumbing pipes for the mothers room next to it are sticking through the floor. Overhead they are working on the balcony floor and studdings are going up for the individual Sunday School rooms.

The nave of the church really looks large now as you look toward the chancel and up at the large beams in the ceiling. In the ceiling, we see electrical outlets and conduits going to the sides for indirect lights and near the purlins for the reading lights.

The side rooms in the pastor's study and work rooms have been roughed in, so they now resemble individual rooms.

Taking the front side entrance to the basement, we come right into the boiler room. It is nice and warm down here as temporary radiators have been hooked up to keep frost from getting into the footings.

The large room in the basement has the floor covered with pipes and fixtures. The plumbers and heating men are busy threading pipe and making connections. The basement has yet to get a cement floor. All of the rooms have something started but nothing completed. Now out the back door and into the cold again.

THE CHURCH wishes to serve you. YOU CAN HELP US, DO THIS—Tell your pastor when you have a problem. —Don't just "grin and bear it." The church counts it a privilege to give you assistance in a time of need.

There is something about a church which commands us to take it to all unchurched places in the whole world. It speaks to the soul. It brings eager joy to children who listen to the stories of Jesus. It shapes the life and decisions of young people as they sit in the church and contemplate the future in the light of the past. It helps young married folks through the difficult years of establishing homes and families. It saves the reason of harassed middle aged men and women who see their high hopes depart. It grants courage and vision to the aged who must face up to the change into another world.

There is something about a church! and once a person finds it, he can never let it go.

THE FOLLOWING ADVERTISERS HELP MAKE THIS PAPER POSSIBLE; KINDLY CONSIDER THEM WHEN POSSIBLE

ROY E. POULSEN

REAL ESTATE — MORTGAGE LOANS

All Forms of Insurance

1420 Washington Ave.

Dial 2-5907

Racine Junction Building and Loan Association

Martin Christensen, Secretary

1603 Washington Avenue Dial 3-4223
SAVINGS insured to \$10,000. PROFITABLE HOME
LOANS to BUY—BUILD—REFINANCE
Dividends paid or credited semi-annually.

Ericksen Drug Store

Myron Ericksen, R.Ph.

1100 State St.

Dial 2-3091

Thompson Gasoline Alleys, Inc.

"BETTER GAS FOR LESS"

Goodyear Tires - - Quality Fuel Oils
6th & Marquette - - 16th & Murray
Douglas & Yout - - - - 16th & Racine
Mygatts Corners

Asdahl & Nelson, Inc.

BUILDING MATERIALS — PAINTS

1231 State Street

Dial 3-2461

SEE

Martin Christensen Company

If you need a Home, a Loan or Insurance

1412 Owen Ave.

Dial 3-0448

HOTEL RACINE

Private dining rooms available for luncheons, dinners and receptions.

Phone 3-3551.

"SMORGASBORD"

Served: Wed. Eve. 5:00 to 8:00 P.M.

Sun. Eve. 4:30 to 7:00 P.M.

S. Elmer Poulsen, Manager